

welters world™

A Government World Supplement

July - September 2024



welters world™

News and product updates from **welters®** organisation worldwide. A place to share our interesting work in agriculture with our heritage herds, historic site restoration, furniture design, stone manufacturing and much more.

welters®

ORGANISATION
WORLDWIDE

Design and Innovation



The unique beauty of **welters®** Border Stone orbs and sarcophagi

An evolutionary story...

Some 30 or so years ago, **welters**[®] commenced the production of cast products. This included the provision of burial chambers and rings, mausolea units and a wide range of plinths, copings, pediments, cladding panels and much more.





Although production began with a relatively simple mix, **welters**[®] soon developed further products, venturing into the casting of decorative products and feature. This included memorials, fire places, paving stones, statues and more.



The combination of grey superstructure products and decorative features led to the introduction of **welters**® Cemetery Village®. Installing any of our various burial chamber options below ground, allows use out of previously unusable, water logged areas.





The provision and installation of the decorative memorials and ancillary products on top of the chambers allowed **welters®** to create beautiful, clean and dry cemetery sections where loved ones can visit their late relatives and friends in peaceful tranquility.



Any number of layouts and configurations can and have been achieved.

Whether installed in straight lines or curved, the results are always of the highest quality and provide an eye-catching landscape.





Ancillary stone products include flower blocks and planters which help to bring colour and nature to the sections as shown.

Our buttresses and decorative pediments turn basic mausolea structures into magnificent features.



Their development of the mausolea interment unit allows **welters**® to provide both front and side charging options as shown. These units dominate the section and are also utilised as retaining structures, allowing the ground level to change. The ground level behind the mausolea is ~1m higher than that at the front.





Although the side charging mausolea pictured here can accommodate 18 full body interments, the footprint is minimal. Another well thought out and efficient use of space within an almost full cemetery.



Again, these large scale community mausolea were created as retaining walls.

A road-side that could never have been used for below ground interment has been transformed to provide hundreds of interment opportunities.





A classic Cemetery Village® provides below and above ground interment for both full body and cremated remains ashes. This example includes an extraordinary entrance arch comprising of stainless steel doves and leaves.





Not only can **welters®** provide community mausolea, our skills can be utilised to create beautiful family mausolea for 2, 4 or 6 interment positions.





The introduction of **welters**[®] modular niches for cremated remains interment provides infinite opportunities





The above ground Stone Basilica Memorial provides interment opportunity for up to 4 sets of cremated remains. These can be installed in any number of locations.





Where the niche and Basilica options shown on previous pages provide above ground interment for cremated remains, our Desktop memorials are installed on top of a below ground chamber. Planter frames to the front are used to display flowers & plants.

One below ground chamber can accept up to 8 sets of cremated remains, making excellent use of the space.





As **welters**® continue to develop their product options, different embellishments, materials and effects are introduced.





This classic Royale Memorial has been very successful. It's beautiful stone features, certainly draw the eye.



One of our firm favourites is this whimsical frog design. With complementary lily pads, the frogs look fantastic in any landscape, whether cemeteries, gardens or parks and can be incorporated into a lovely water feature as shown.





One of **welters**® most understated products is our grass mats. The grass mats are laid in similar style to paving stones but the holes within the structures can be seeded for grass or filled with gravel or another dry material.

The grass mats create a clean, dry surface for pedestrians and vehicles alike and can be laid in any location, including private driveways and gardens.





To complement our vast cast stone inventory, we have enjoyed designing and creating exquisite features from stainless steel.

These gates are exceptional and the tracery to the right draws and reflects the light beautifully.



These images show two of the first Portico of Peace features that **welters®** installed.

The doves appear to be flying free, making their way into the sky.





The original Portico of Peace design was extended and enlarged to create this massive wonder. What is a structural archway is transformed with vines, doves and leaves, catching and reflecting the light. Beautiful from any angle.

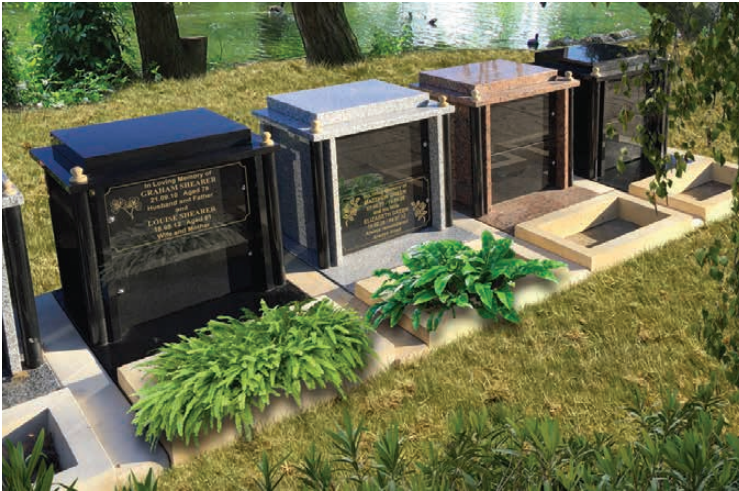




welters[®]
ORGANISATION
WORLDWIDE
Design and Innovation

Graphic *ART*[™]

The Majestic Memorial was developed as a granite alternative to our stone Basilica Memorial. With an internal cavity capable of accepting up to 4 sets of cremated remains, this exciting product is enhanced with columns and finials and can be supplied with planting frames to the front.





Although the Majestic Memorial and other granite based products have been very successful over the years, **welters**[®] is dedicated to doing our part to reduce our carbon footprint. We now endeavour to reduce our use of imported granite to a minimum.

The Memorial Orb range has been developed with the use of British sourced material and is designed to fit in with the surrounding nature and landscapes. The orbs can be used to inter cremated remains or as interesting features in gardens and parks.





The memorial orbs are most effective when positioned in random formation as part of stone rockeries and along pathways. They are incredibly versatile and fit in well with our standing stones.



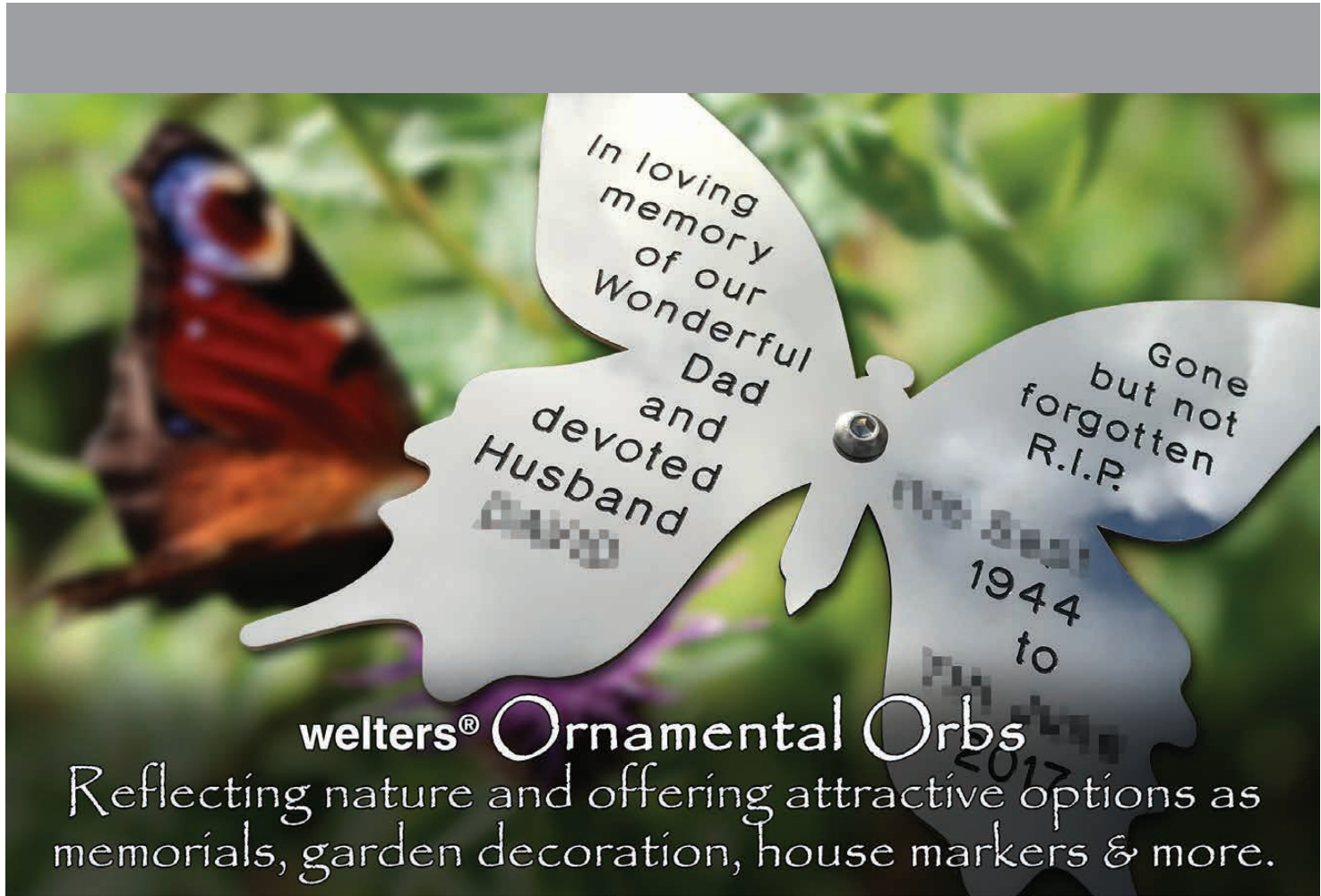


welters® range of Orbs include the stunning ornamental orbs. These comprise of a small stone orb with a long steel rod. The rod is topped with a steel profile which can be left blank or etched with a name, poem or with words of reflection.



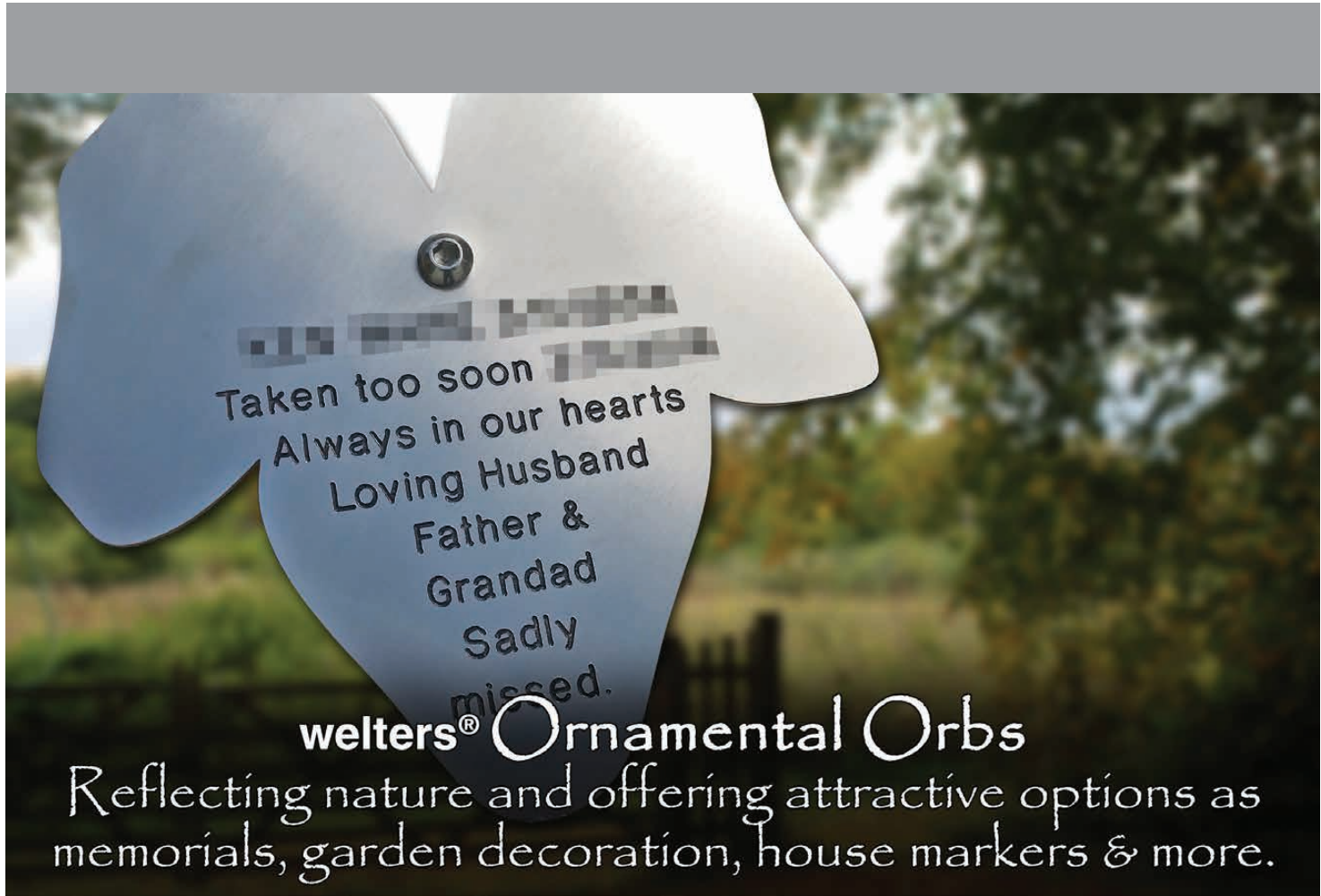
Whether positioned on their own within cemeteries or gardens, or interspersed between larger memorials, the ornamental orbs are a success, providing unusual and bespoke offerings.





welters® Ornamental Orbs

Reflecting nature and offering attractive options as memorials, garden decoration, house markers & more.



Taken too soon
Always in our hearts
Loving Husband
Father &
Grandad
Sadly
missed.

welters® Ornamental Orbs

Reflecting nature and offering attractive options as memorials, garden decoration, house markers & more.



Most
beautiful
flower in
the garden
Forever
loved and
missed
Forever in
our hearts

Forever friends

welters® Ornamental Orbs

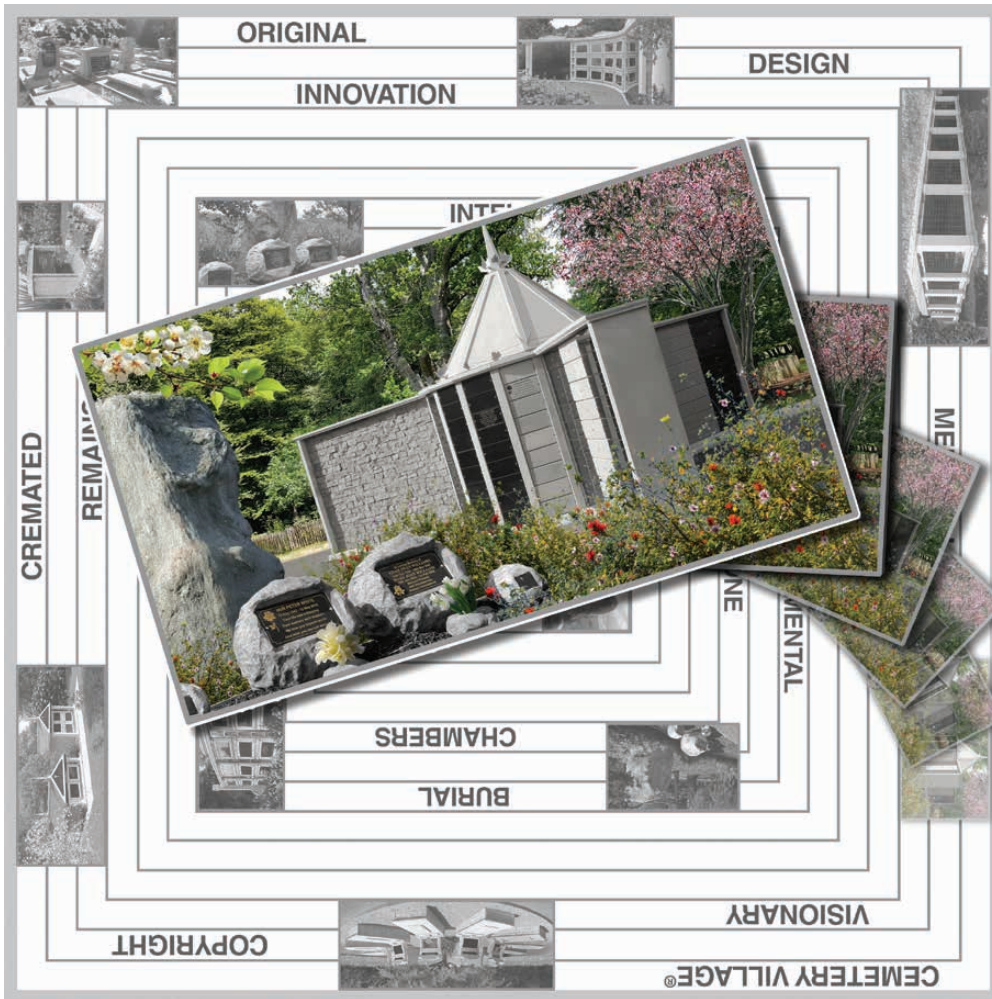
Reflecting nature and offering attractive options as
memorials, garden decoration, house markers & more.



Shine Always
Big Grandad

welters® Ornamental Orbs

Reflecting nature and offering attractive options as
memorials, garden decoration, house markers & more.



welters®

ORGANISATION WORLDWIDE

DESIGN AND MANAGEMENT CONSULTANTS
RESEARCH, DEVELOPMENT AND
MANUFACTURING

**The Originators and
Leaders in the industry**

INNOVATION BY DESIGN
Creative and original

Over the past three decades, **welters®** have introduced new and innovative above and below ground interment and memorial facilities to the industry.

Today, many of these systems are accepted as standard nationwide and the company continues to produce new and original concepts, leading the way into the next decade.

Supplying products & systems for all full body interment needs, below & above ground, cremated remains & memorialisation.

Visit us at
www.welters-worldwide.com



As well as individual profiles, **welters**[®] leaves have become part of our Tree of Life design. Offering inscription opportunities along the branches, gently swaying in the breeze.





Complementing the range of orbs are **welters**[®] Standing Stones and boulders. All manufactured by **welters**[®] with British sourced materials.

The stones and boulders can be provided individually or as groupings as shown.

Large boulders or rocks can be produced to house tablets for inscription purposes, providing a communal memorial option.

As with the orbs, the stones and boulders can be installed in any location, creating natural and stunning features.









Another addition to the range of Orbs is **welters®** Woodland Orb. Designed to complement any woodland area, garden or memorial grounds.

The timber material used for the Woodland Orbs is sourced

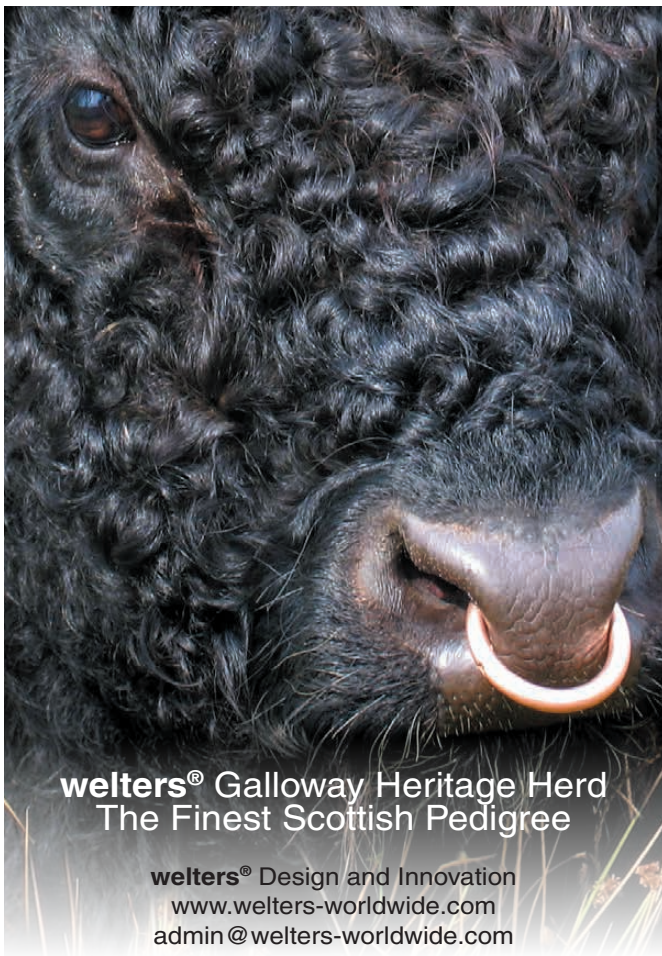
from natural windfall, allowing each orb to be unique. As the Woodland Orbs become established in their natural environment, they become home to mosses and insects, contributing to the wildlife and health of the area.





In addition to the work we have done and continue to do in the manufacturing industry, **welters®** are dedicated in assisting with flood prevention in the form of attenuation, defences, collection and distribution.





welters® Galloway Heritage Herd
The Finest Scottish Pedigree

welters® Design and Innovation
www.welters-worldwide.com
admin@welters-worldwide.com



The Heritage Herd
White Galloways

welters®
ORGANISATION
WORLDWIDE

+44 (0) 1387 375220
+44 (0) 7710 109 457
www.welters-worldwide.com
admin@welters-worldwide.com

Season's Greetings



Order your Christmas cards now.
Contact welters® for more information.
admin@welters-worldwide.com

welters®
ORGANISATION
WORLDWIDE

