

# welters world™

*A Government World Supplement*

*April - June 2024*



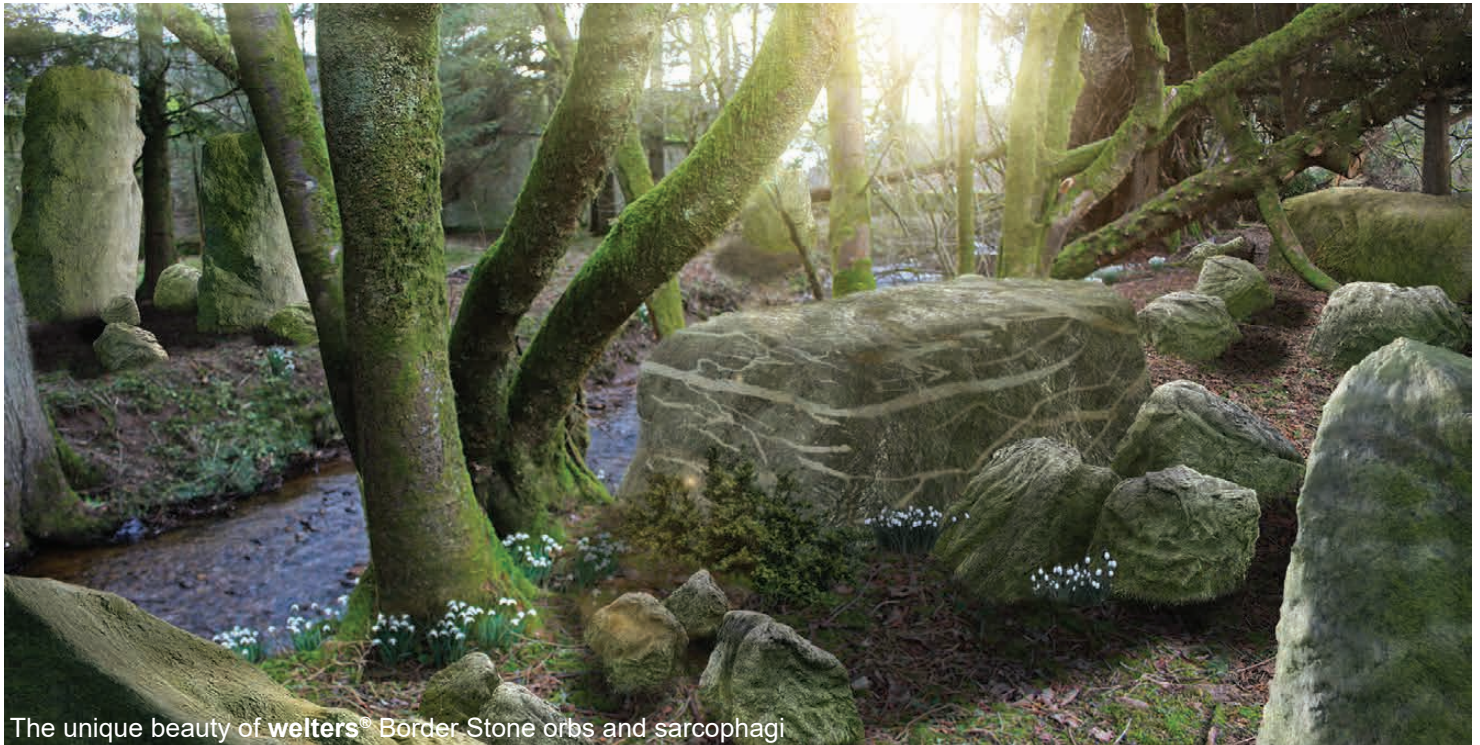
# welters world™

News and product updates from **welters®** organisation worldwide. A place to share our interesting work in agriculture with our heritage herds, historic site restoration, furniture design, stone manufacturing and much more.

# welters®

ORGANISATION  
WORLDWIDE

Design and Innovation



The unique beauty of **welters®** Border Stone orbs and sarcophagi

Gallerie

Art

welters<sup>®</sup>  
ORGANISATION  
WORLDWIDE

Technology

Manufacturing

Design

Nature

Agriculture

***Watch this space...* THE FUTURE IS COMING**



## welters® Majestic Memorials

The evolution of a product begins with the concept designs and sketches. The finished product may well end up entirely different than the original idea or concept.

The Majestic Memorial and Memorial Kerb arrangement are examples of this evolution.

This visual shows one of the more advanced options, including a tabletop style kerb.

The design can be complemented with embellished steel tracery to enhance the visual aspects of the memorial.





Other designs considered included a double height housings as shown and a full-sized tabletop feature. Increasing the available inscription space considerably.





Visual representations of the designs are created showing how they can be arranged in rows and what optional extras can be offered alongside.



The more variety that can be achieved in each grave space, the more the final aesthetic is enhanced. The variation draws the eye and creates a beautiful area for owners and visitors alike. The modularity of the final design provides easy transformation from single to double height. It would also enable multiple width options.





Adding plants, shrubs and trees to an installation area, not only enhances the overall visual, but helps bring the peaceful sounds of birds and insects, creating a full sensory experience.



The tracery can be added in the form of individual 'branches' fitted in a stone orb on either side of the housing. The branches are bent to reach over the top of the housing and are adorned with doves and leaves. Flower profiles are also available for display in the flower block at the foot of the chambers.





Visual representations are an excellent method of creating visualisation for a client to see what their completed site may look like.





The Majestic Memorials can be installed at ground level or on raised sections. They are also available as individual or multiple installation options.



Although the original concept for the Majestic is as a memorial for cremated remains, it can be utilised for the housing of keepsakes as well.



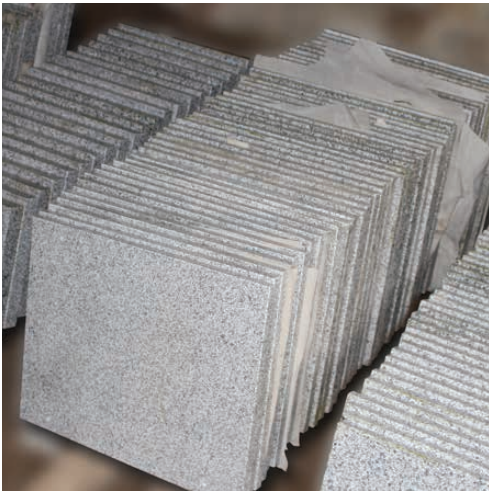
Additionally, the housings itself can be used in a number of different ways and locations. For example, as an attractive welcome or information sign to a park or garden or as a name or number display for a residence. The options are endless.

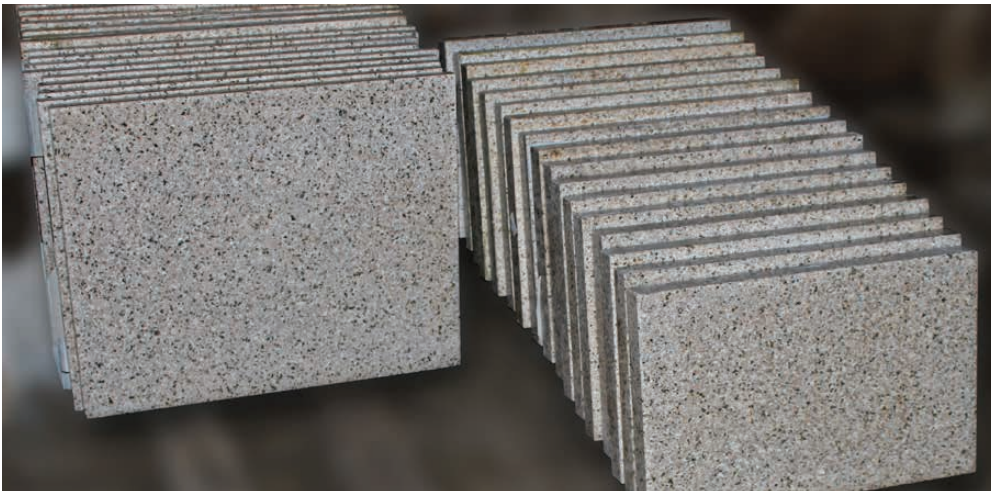


Once the final design of the product is agreed, it is time to source the materials and parts required to produce it.

In this example, the client has requested granite as the main material for the memorial housing.

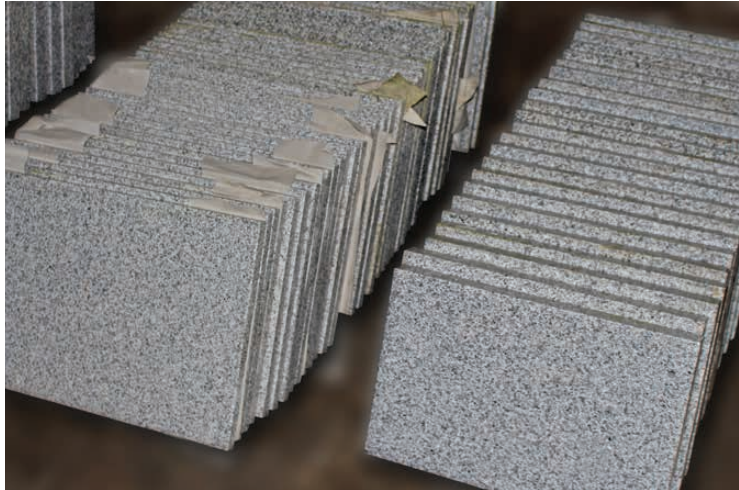
The part drawings are created and the granite is cut and polished to the correct sizes.



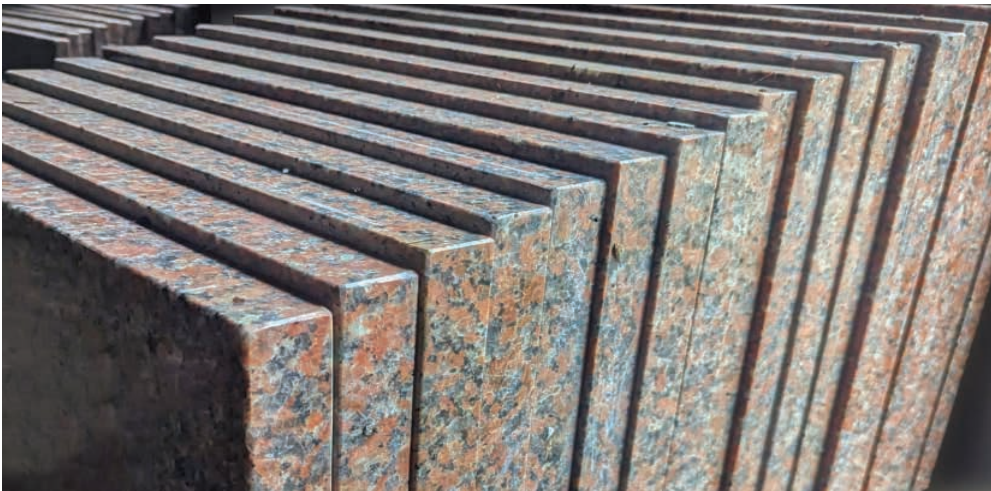


The completed parts are stacked and handled with great care to ensure no damage occurs.

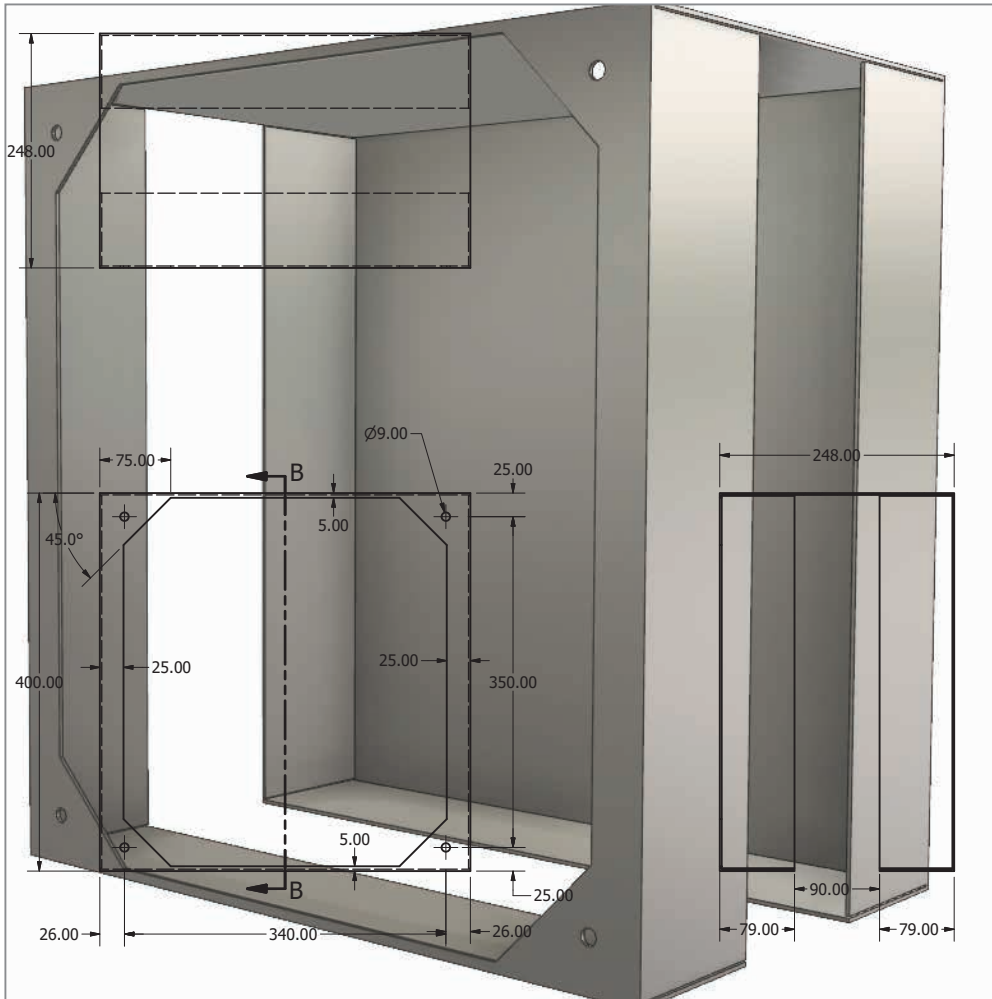
Each panel is checked thoroughly and any parts found with defects, are discarded, ensuring that each component is of the highest quality.



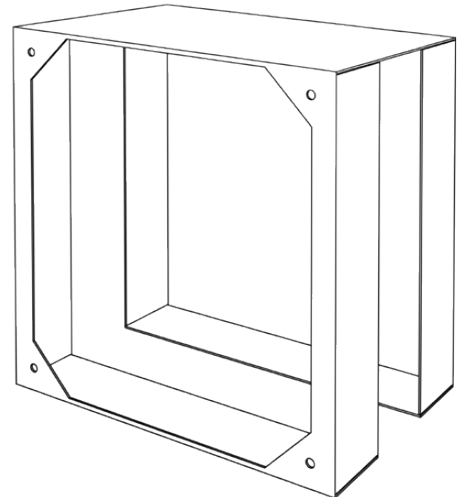
The panels are sorted into different colours, sizes and thicknesses and stacked accordingly.







A stainless steel support frame is designed and produced. The frame acts as the structural superstructure to which all outer panels are fixed, leaving the maximum internal volume.

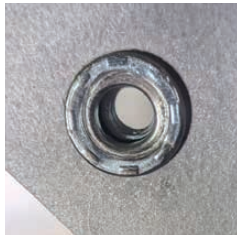
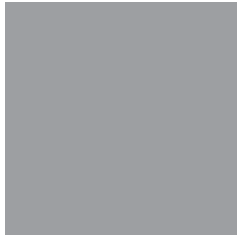




On completion of production of the metal frames, the assembly of the first prototype can commence.

The metal frame is fixed to the large base and the outer side panels are positioned.

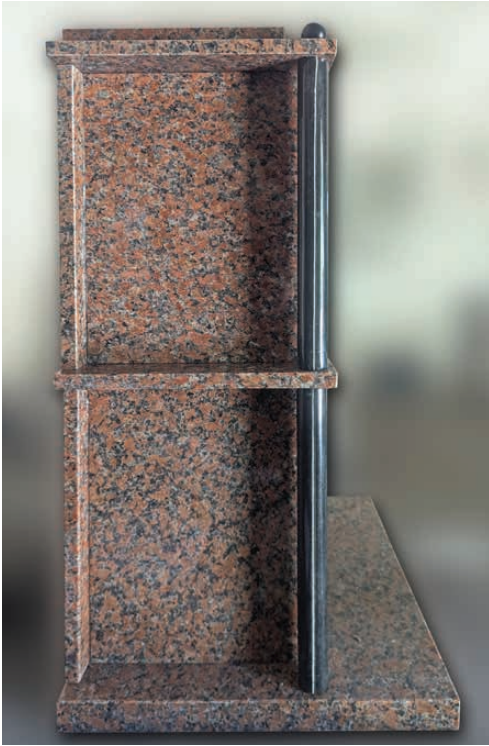
Threaded fixing holes are created in the 4 corners of the front face of the frame for the removable front tablet.



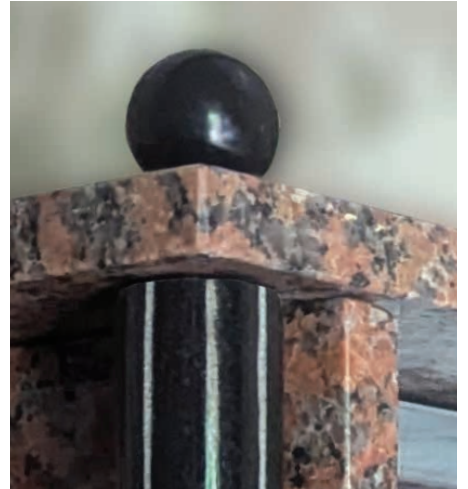


A prototype of the double height version of the product is created to ensure all parts are the correct size and fit together accordingly.



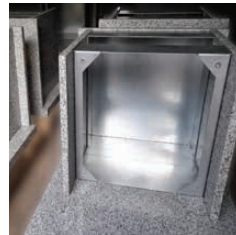


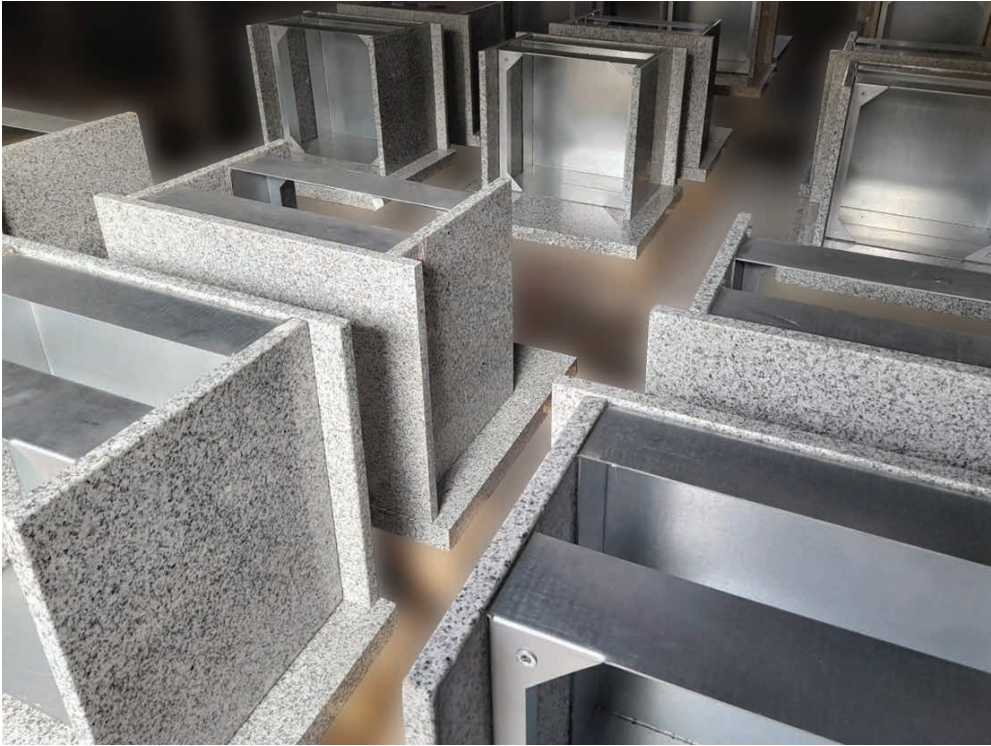
All aspects and features of the product are checked and double checked to ensure they are perfectly fit for purpose.





After the prototype is completed and all parties are content with the final design, with any modifications take place prior to finalisation, large scale production can commence.





Each and every component and parts is checked and double checked along every step of the production and assembly process.

Any discrepancy, no matter how small, is rectified, ensuring each and every finished product is perfect prior to dispatch.





**welters**<sup>®</sup>  
ORGANISATION  
WORLDWIDE  
Design and Innovation

# Graphic ART<sup>™</sup>



It is often essential to either inspect the parts in direct sunlight or with a torch be sure that each and every part is perfect. No scratch or chip is acceptable.





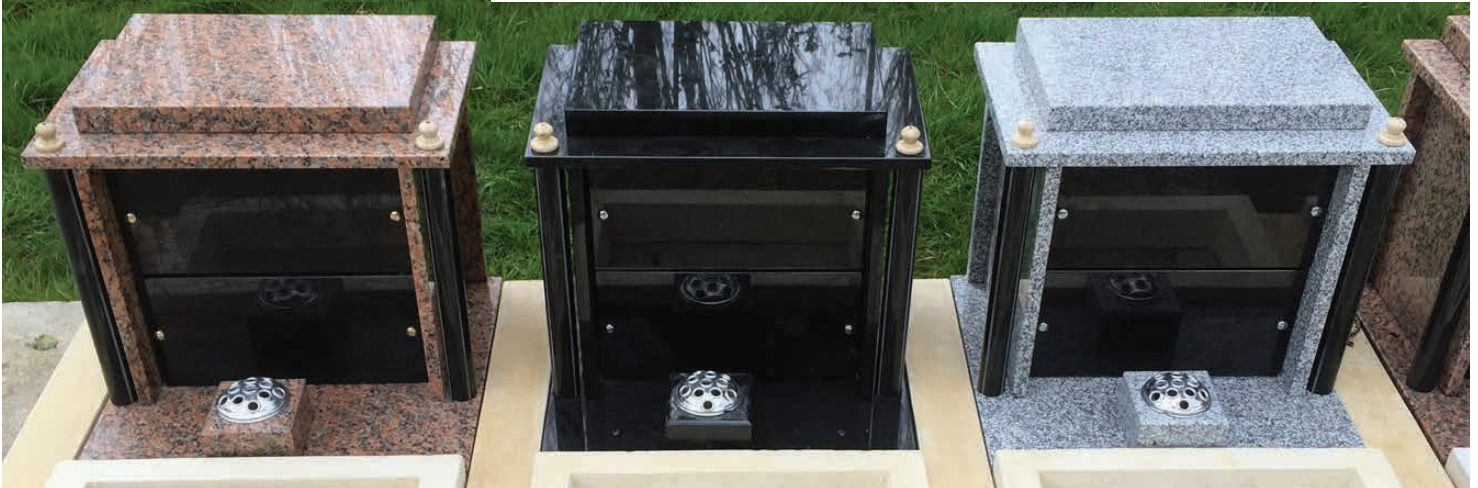


Once the off-site assembly of the parts is completed, they are securely packed and loaded on the appropriate vehicle for delivery to site.





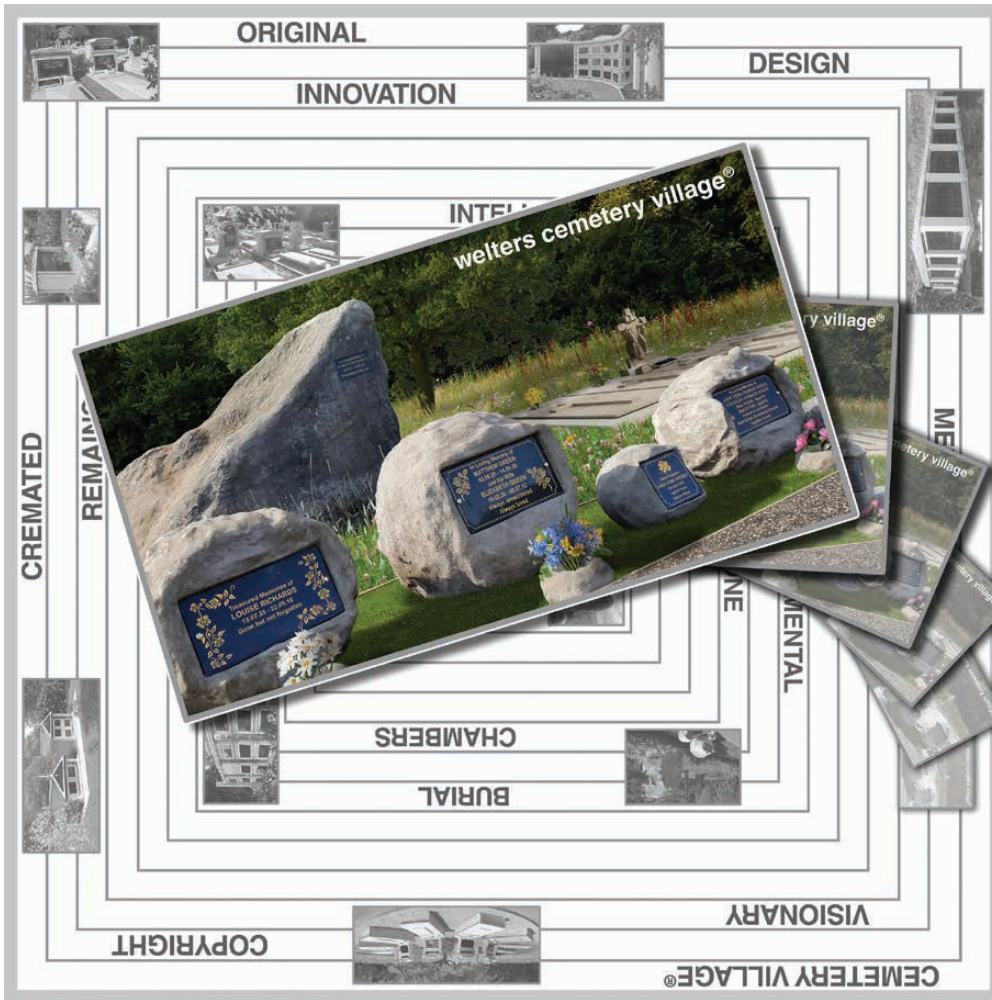
These example images show some individual single units installed in various locations.





Further installation examples of a single height arrangement. This can be installed with a planting frame to the front or a small flower vase holder.





# welters®

## ORGANISATION WORLDWIDE

DESIGN AND MANAGEMENT CONSULTANTS

RESEARCH, DEVELOPMENT AND  
MANUFACTURING

**The Originators and  
Leaders in the industry**

**INNOVATION BY DESIGN**  
**Creative and original**

Over the past three decades, **welters®** have introduced new and innovative above and below ground interment and memorial facilities to the industry.

Today, many of these systems are accepted as standard nationwide and the company continues to produce new and original concepts, leading the way into the next decade.

Supplying products & systems for all full body interment needs, below & above ground, cremated remains & memorialisation.

Visit us at  
[www.welters-worldwide.com](http://www.welters-worldwide.com)

These dramatic images were taken on a larger scale site where double height memorial were installed in raised rows.



The double height housings create maximum space for inscriptions and messages to remember loved ones.



The columns and finials are attractive and take a memorial design from simple and plain to beautiful and eye-catching.



These images are works in progress. The kerbs memorials, which complement the design of the headstones are yet to be installed.



In order to do our part for climate change and the environment, we no longer offer full granite memorial options.



Our products and systems are offered in stone materials manufactured from locally sourced materials.





**welters**<sup>®</sup>  
ORGANISATION  
WORLDWIDE  
Design and Innovation

# Graphic ART<sup>™</sup>

welters® aim to merge our product design and manufacture with nature and the environment, creating a business that does our bit to reduce our carbon footprint while enhancing our offerings. Our tree planting scheme, arboretum and native breeds heritage herds assist us in ensuring that nature and technology together can improve our lives and our environment.

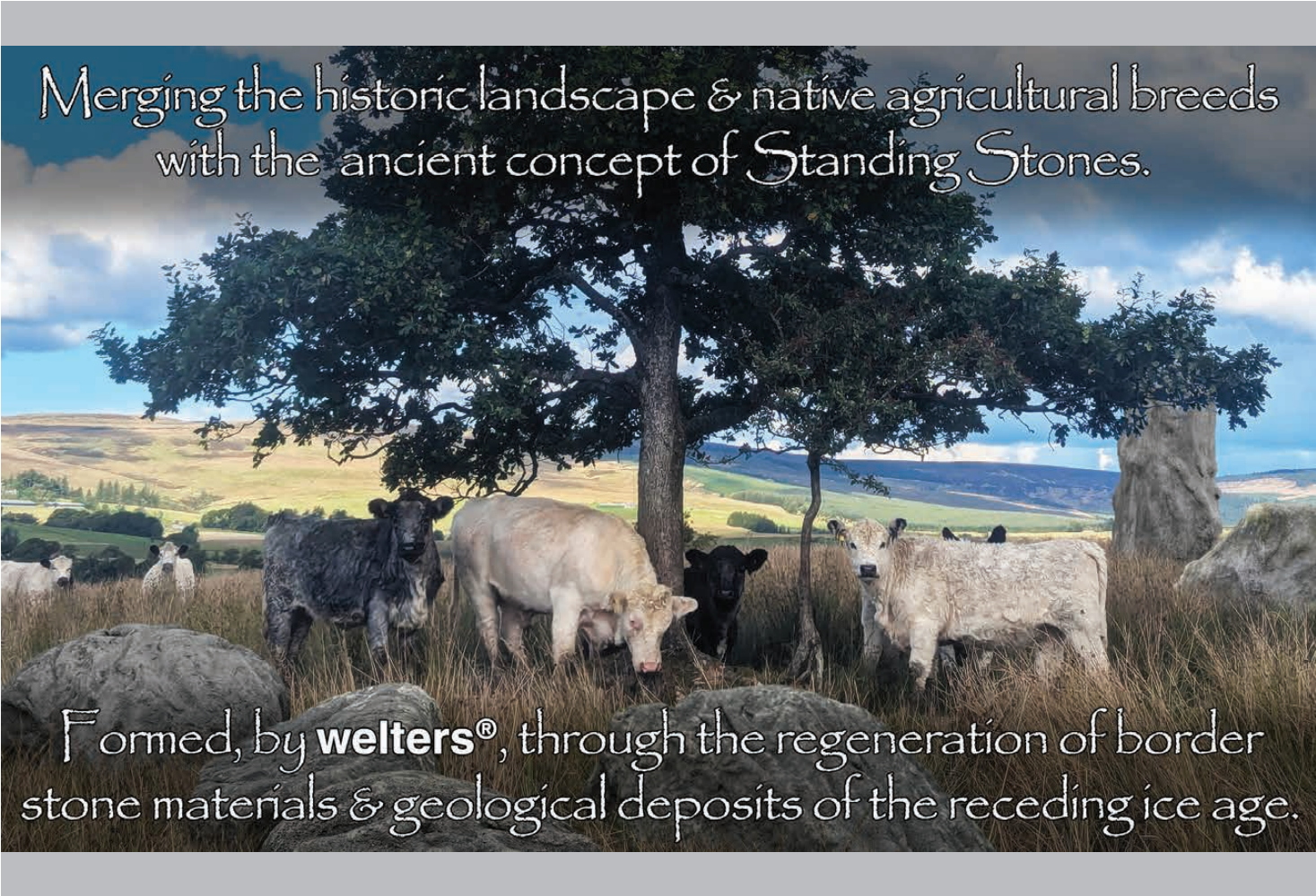


The image is a composite landscape. In the foreground, there are several cows of various colors (white, brown, black) in a lush green field with scattered rocks and wildflowers. A large white cow is prominent on the right, looking towards the camera. In the background, there are rolling green hills, a large tree, and a sunset sky with orange and yellow hues. The overall scene is a blend of nature and agriculture.

# Merging Masonry with Arboretum Development

**welters**<sup>®</sup>  
ORGANISATION  
WORLDWIDE

# Environmental Agriculture



Merging the historic landscape & native agricultural breeds  
with the ancient concept of Standing Stones.

Formed, by **welters**<sup>®</sup>, through the regeneration of border  
stone materials & geological deposits of the receding ice age.

A photograph of a herd of cattle in a field. In the foreground, several large, grey, moss-covered standing stones are visible. A wire fence runs across the middle ground. Behind the fence, a group of cattle, including white, black, and grey breeds, are looking towards the camera. The background features a line of trees with green and yellow foliage under a bright sky.

Merging the historic landscape & native agricultural breeds  
with the ancient concept of Standing Stones.

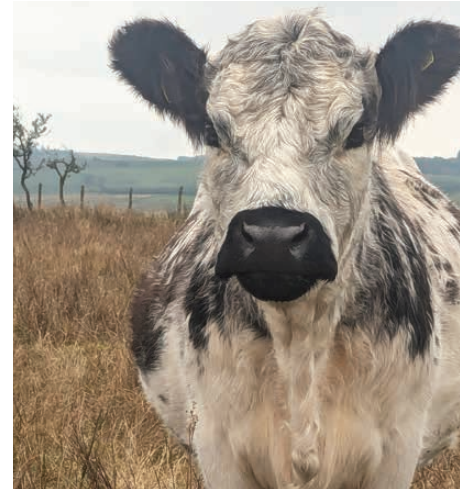
Formed, by **welters**<sup>®</sup>, through the regeneration of border  
stone materials & geological deposits of the receding ice age.



Merging the historic landscape & native agricultural breeds  
with the ancient concept of Standing Stones.

Formed, by **welters**<sup>®</sup>, through the regeneration of border  
stone materials & geological deposits of the receding ice age.

Example images of some of the members of our native breed heritage herds.





Example images of some of the members of our native breed heritage herds.





Example images of some of the members of our native breed heritage herds.



Water  
management

welters®  
ORGANISATION  
WORLDWIDE

Extreme  
conditions

Climate  
change

Attenuation

Drainage  
solutions

Environmental Projects

