

# Mould Operatives Required

Welters design and manufacture a range of concrete products in opc and decorative cast stone and are seeking full time operatives to work at their Carlisle factory. The rate of pay is dependent upon experience. Normal working hours are 7.30am to 4pm weekdays and some flexibility may be required to meet company needs.

Job specification:

- Pre-cast concrete background\*
- Building experience\*
- Mechanical training\*
- Attention to detail is a requirement
- Willing to work away from home if required to assist on site works installation
- Full driving license\*
- CSCS card\*

\* ideal but not essential

Welters are an equal opportunity employer and welcome applications from all suitably qualified persons regardless of their race, sex, disability, religion/belief, sexual orientation or age.

Please send a CV to [jackie@welters.co.uk](mailto:jackie@welters.co.uk) or phone 01228 674 947

**welters**<sup>®</sup>  
ORGANISATION  
WORLDWIDE  
a trading name of F. D. Welters Ltd

The post [Mould Operatives Required](#) appeared first on [Latest News](#).

---

## Expanding tooling base

Welters reassure that whilst others assemble in academic groups to conceive solutions to hypothetical questions, we are expanding our tooling base to

supply important elements to key industries urgently required in this most vital and serious need of national and world trade.



The post [Expanding tooling base](#) appeared first on [Latest News](#).

---

## [Tooling Investment](#)

Through tooling investment in response to national and international need, whilst many chatter and philosophise, **welters** act and implement.



The post [Tooling Investment](#) appeared first on [Latest News](#).

---

## [Super fine systems](#)

welters under active pressure to supply the nation with its industrial requirements whilst designing super fine systems. It will be a very busy weekend!

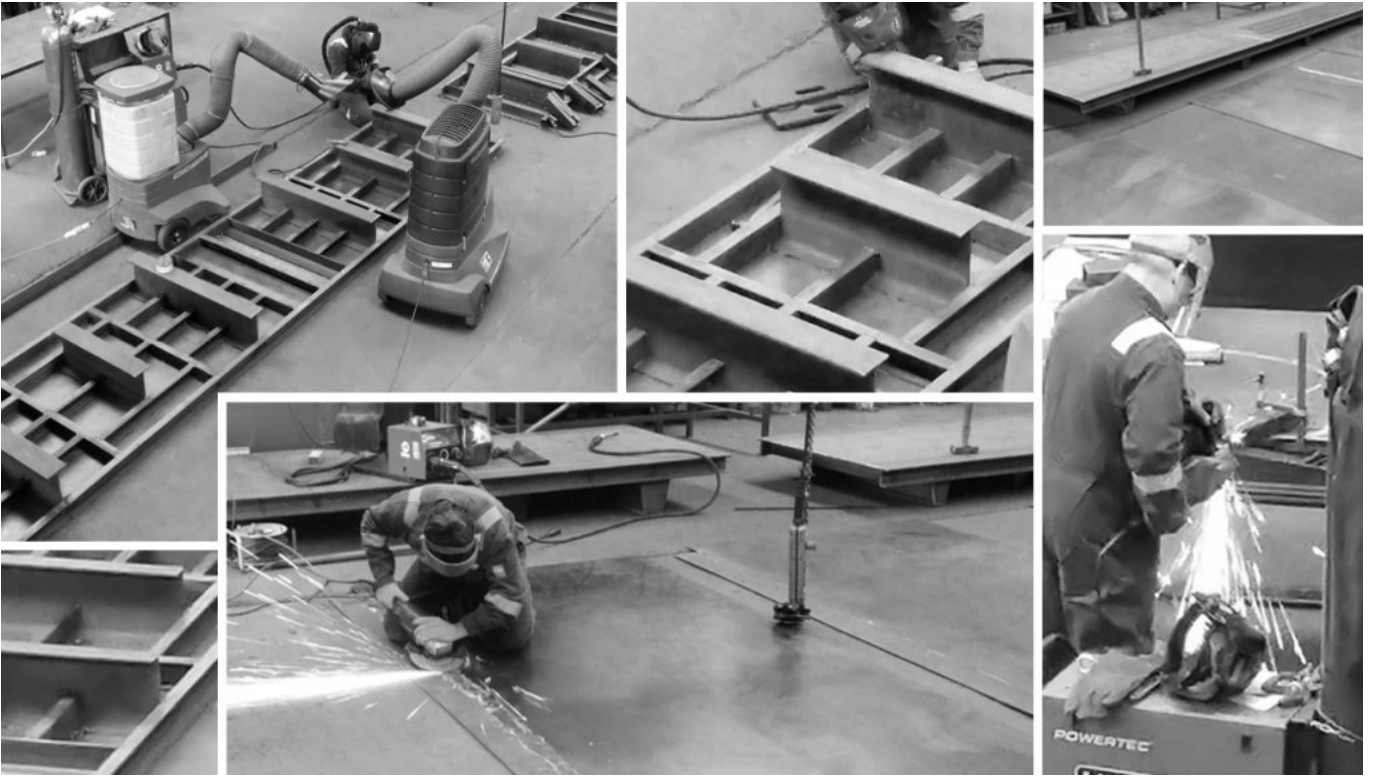


The post [Super fine systems](#) appeared first on [Latest News](#).

---

## [New Tooling](#)

welters prototyping facility working flat out on new tooling to keep apace of new product demand instigated by our progressive design department.



The post [New Tooling](#) appeared first on [Latest News](#).