

# 10th Annual Transpacific Entrepreneurial Conference to delve into Hong Kong's role as super connector (with photos)

The Hong Kong Economic and Trade Office (Toronto) (Toronto ETO) and Invest Hong Kong (InvestHK) supported the 10th Annual Transpacific Entrepreneurial Conference jointly hosted by the Canadian Chamber of Commerce in Hong Kong and the Hong Kong-Canada Business Association (HKCBA) on January 22 (Toronto time). This annual rendezvous focussed on exploring innovative ideas, biotech start-ups and business opportunities, and strengthening commercial relationships between Canada, Hong Kong, and other Asian economies.

In delivering opening remarks at the hybrid conference to delve into Hong Kong's role as a commitment to the rule of law and judicial independence, is therefore vital to the continued success of the "super connector", the Director of the Toronto ETO, Ms Emily Mo, is delighted to share with participants that Hong Kong has been bouncing back over the past year as travel between Canada and Hong Kong resumed.

"Hong Kong's 2023 GDP growth is forecast to be 3.2 per cent," said Ms Mo. "Inflation was moderate at 2 per cent, unemployment rate at 2.9 per cent, and flight connection capacity recovered to about 80 per cent with an anticipated full recovery this year."

Ms Mo pointed out that more than 9 000 companies with mainland China or foreign head offices had chosen to set foot in Hong Kong, representing an increase in 2023. Regarding the strategic enterprises opening in Hong Kong, Ms Mo add that "they brought in not just strategic enterprises benefitting Hong Kong's business landscape, but also an initial investment of around HK\$30 billion and the creation of 10 000 jobs between December 2022 and October 2023."

She also noted that Hong Kong got a new record of numbers of start-ups and their staff employed in 2023. Over 4 200 start-ups were in Hong Kong, and a quarter of them are founded by non-locals. Among the non-local start-ups, Canada has the seventh largest share.

"Looking forward, with the institutional advantages of Hong Kong under the 'one country, two systems', Hong Kong has been prepared and inspired to offer opportunities and to create new opportunities for the city and everyone who sees it as their destination for business, career or personal growth," said Ms Mo.

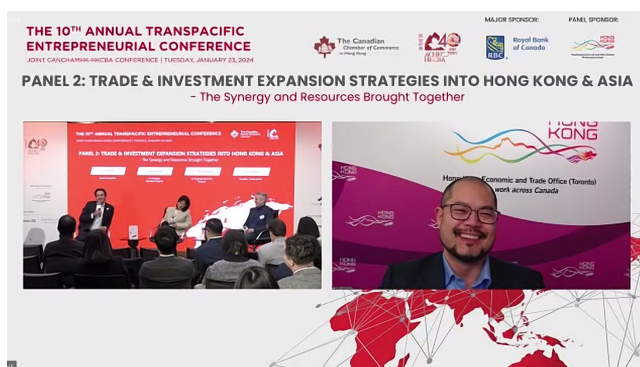
As the world's top international financial centre, and a global offshore

wealth management centre ranked second worldwide after Switzerland, Hong Kong's place in the Guangdong-Hong Kong-Macao Greater Bay Area and various new policies and tax concessions make it an increasingly attractive hub for family offices.

"Over 40 Canadian delegates will join the Asian Financial Forum to be held in Hong Kong this week, including the Canadian venture capitalists looking for investment projects and companies seeking for capital and partners," Ms Mo remarked.

Ms Mo added that the Hong Kong Special Administrative Region Government is in an internationally leading position to promote green finance, ESG, web 3.0, and talent attraction, etc., facilitating all long-sighted business to grow. She reassured all participants that Hong Kong is moving fast to cope with the evolving world and is the best place to do business in Asia.

The 10th Annual Transpacific Entrepreneurial Conference included six panel discussions with over 30 speakers from leading companies in different sectors including wealth management, investment opportunities, innovation and technology, biotech, sustainability, renewable energy, health-tech and artificial intelligence. The Head of Business and Talent Attraction/Investment Promotion of InvestHK (Toronto Office), Mr Christopher Chen, shared insights at the second panel themed "Trade & Investment Expansion Strategies into Hong Kong and Asia".



## [LegCo to debate motion on promoting development of children's healthcare services](#)

The following is issued on behalf of the Legislative Council Secretariat:

The Legislative Council (LegCo) will hold a meeting tomorrow (January 24) at 11am in the Chamber of the LegCo Complex. During the meeting, Members will debate a motion on promoting the development of children's healthcare

services. The motion, moved by Dr Ngan Man-yu, is set out in Appendix 1. Mr Tang Ka-piu and Dr Dennis Lam will move separate amendments to Dr Ngan's motion.

Mrs Regina Ip will also move a motion on optimising the use of land resources by expediting the development of outlying islands. The motion is set out in Appendix 2. Mr Frankie Yick, Mr Chan Hok-fung, Mr Kwok Wai-keung and Mr Yim Kong will move separate amendments to Mrs Ip's motion.

Members will also ask the Government 22 questions on various policy areas, six of which require oral replies.

The agenda of the above meeting can be obtained via the LegCo Website ([www.legco.gov.hk](http://www.legco.gov.hk)). Members of the public can watch or listen to the meeting via the "Webcast" system on the LegCo Website. To observe the proceedings of the meeting at the LegCo Complex, members of the public may call 3919 3399 during office hours to reserve seats.

---

## **Red flags hoisted at Silverstrand Beach and Clear Water Bay Second Beach**

Attention TV/radio announcers:

Please broadcast the following as soon as possible:

Here is an item of interest to swimmers.

The Leisure and Cultural Services Department announced today (January 23) that due to big waves, red flags have been hoisted at Silverstrand Beach and Clear Water Bay Second Beach in Sai Kung District. Beachgoers are advised not to swim at these beaches.

---

## **CHP reminds public on precautions against cold weather**

The Centre for Health Protection (CHP) of the Department of Health (DH) today (January 23) reminded the public, particularly the elderly and people with chronic illnesses, to adopt appropriate measures to protect their health in view of the cold weather.

A spokesman for the CHP said that cold weather can easily trigger or exacerbate diseases, especially among the elderly and persons suffering from heart disease, respiratory illness or other chronic illnesses.

"Elderly people have less insulating fat beneath their skin to keep them warm and their body temperature control mechanism may be weaker. Their body may not be able to appropriately respond to the cold weather," the spokesman said.

Some senior persons may have decreased mobility, which can in turn impair their ability to generate and conserve body heat. Chronic illnesses, such as hypertension, diabetes and endocrine disorders may undermine the health of elderly people and lower their metabolic rate, subsequently causing their body to generate less heat. Persons with chronic illnesses such as chronic respiratory illnesses or heart disease are vulnerable to disease aggravation due to cold weather.

The CHP reminded the public, in particular the elderly and persons with chronic illnesses, to adopt the following preventive measures:

- Take note of the weather forecast. Wear warm clothing, including hats, scarves, gloves and socks accordingly;
- Consume sufficient food to ensure adequate calorie intake;
- Perform regular exercise to facilitate blood circulation and heat production;
- Stay in a warm environment and avoid prolonged outdoor exposure;
- Use heaters with care, and maintain adequate indoor ventilation; and
- Seek medical advice if feeling unwell.

In addition, the public should avoid alcoholic beverages.

"Drinking alcohol cannot keep you warm. Alcohol accelerates the loss of body heat through dilated blood vessels, resulting in chilling instead," the spokesman said.

"Parents should ensure that babies are sufficiently warm, but it is also important to keep babies relatively lightly clothed to avoid overheating them," the spokesman added.

Parents should observe the following safety measures when putting their children to bed:

- Keep the room well ventilated and at a comfortable temperature;
- Always place babies on their back to sleep. Leave their head, face and arms uncovered during sleep;
- Babies do not need pillows. Place babies on a firm and well-fitted mattress to sleep. Avoid soft objects, pillows and loose bedding;
- Let babies sleep in a cot placed in the parents' room and near their bed; and
- Maintain a smoke-free environment.

In addition, seasonal influenza vaccination is recommended for all persons aged 6 months or above except those with known contraindications. Persons at higher risk of getting influenza and its complications, including the elderly and children, should receive seasonal influenza vaccination early. Please see details of the vaccination schemes on the [CHP's website](#).

A person who gets influenza and COVID-19 at the same time may be more seriously ill and would have a higher risk of death. Influenza vaccination may reduce the likelihood of hospitalisation and the length of stay. It is important for elderly persons, especially those residing in residential care homes, to receive both seasonal influenza vaccination and COVID-19 vaccination. They should also receive an additional booster against COVID-19 according to recommendations as soon as possible. The public should also maintain good personal and environmental hygiene against respiratory illnesses and note the following:

- Surgical masks can prevent transmission of respiratory viruses from ill persons. It is essential for persons who are symptomatic (even if having mild symptoms) to wear a surgical mask;
- Wear a surgical mask when taking public transport or staying in crowded places. It is important to wear a mask properly, including performing hand hygiene before wearing and after removing a mask;
- Avoid touching one's eyes, mouth and nose;
- Wash hands with liquid soap and water properly whenever possibly contaminated;
- When hands are not visibly soiled, clean them with 70 to 80 per cent alcohol-based handrub;
- Cover the mouth and nose with tissue paper when sneezing or coughing. Dispose of soiled tissue paper properly into a lidded rubbish bin, and wash hands thoroughly afterwards;
- Maintain good indoor ventilation;
- When having respiratory symptoms, wear a surgical mask, refrain from work or attending classes at school, avoid going to crowded places and seek medical advice promptly; and
- Maintain a balanced diet, exercise regularly, take adequate rest, do not smoke and avoid overstress.

Food-borne diseases, particularly those linked to hot pot cuisine, are also common in cold weather. The following preventive measures should be taken:

- Wash hands before handling and consuming food;
- Do not patronise unlicensed vendors or those with poor hygienic standards while selecting food;
- Wash and cook all food thoroughly;
- Vegetables should be washed thoroughly in clean running water before cooking and consumption. When appropriate, scrub vegetables with hard surfaces with a clean brush to remove dirt and substances, including

- pesticide residues and contaminants, from the surface and crevices;
- Shrimps should be fully cooked until the shells turn red and the flesh turns white and opaque;
  - For shellfish such as scallops and geoduck, scrub the shells thoroughly and remove internal organs;
  - Most hot pot ingredients should be stored in a refrigerator at 4 degrees Celsius or below, while frozen food should be stored in a freezer at -18 degrees C or below;
  - Never use raw eggs as a dipping sauce for hot pot; and
  - Use different sets of chopsticks to handle raw and cooked food to avoid cross-contamination.

In addition, when using fuel-burning appliances, especially in indoor areas, the public should ensure adequate ventilation to avoid harmful exposure to carbon monoxide (CO) and prevent CO poisoning.

For more health information, the public may call the DH's Health Education Infoline (2833 0111) or visit the [CHP's website](#) and [Facebook Fanpage](#).

The public may also call Dial-a-Weather (1878 200) or visit the [website of the Hong Kong Observatory](#) for the latest weather information and forecast, or its [page on Weather Information for Senior Citizens](#).

---

## **Employers and employees should take precautions during cold weather**

Attention duty announcers, radio and TV stations:

Please broadcast the following special announcement immediately, and repeat it at frequent intervals when the Cold Weather Warning is in force:

The Labour Department reminds employers that as the Cold Weather Warning is in force, they should take appropriate precautions such as reminding employees who have to work outdoors or in remote areas to wear appropriately warm clothing, and make arrangements for employees to rotate from outdoor to indoor or sheltered work sites as far as possible. Employees should take note of the weather report, wear appropriately warm clothing and be mindful of their health conditions. They should notify their supervisors and seek medical help immediately if feeling unwell, such as having cold limbs and body shivering.