

[Hongkong Post to issue "Hong Kong Past and Present Series: Victoria Harbour" special stamps \(with photos\)](#)

Hongkong Post will launch a special stamp issue and associated philatelic products with the theme "Hong Kong Past and Present Series: Victoria Harbour" tomorrow (September 29).

Hong Kong has evolved from a small fishing village into an international metropolis through more than a century and a half, and has witnessed rapid changes to the city. Hong Kong is endowed with mountainous terrain, meandering coastlines and a good natural harbour. Since the mid-19th century, economic and trade activities have centred around both sides of Victoria Harbour, giving rise to the construction of landmark buildings in the area.

Lying between Hong Kong Island and the Kowloon Peninsula, Victoria Harbour is one of the world-famous natural harbours and has been identified as an icon of Hong Kong. Victoria Harbour boasts scenery that is beautiful day and night, captivating to tourists and endearing to locals.

The set of four stamps reflects a journey through time to savour the past and present of the harbour. Divided into upper and lower halves, the stamp design shows in the two halves panoramic views over Hong Kong Island and the Kowloon Peninsula from Victoria Peak captured in 1962 and 2020. The se-tenant style underscores the profound transformations that the harbour has undergone over more than half a century. This captures the stunning contrast between the developing city of the 1960s and the famed unique skyline shaped by modern skyscrapers on both shores.

In addition, a lenticular effect is applied on the postage prepaid picture cards, showing Victoria Harbour in different eras through an image-changing effect. By placing the four cards side by side, people will be able to appreciate the panorama of the harbour. The first day cover adopts a clean and simplistic design with an illustrated modern camera in contrast with an old model to accentuate the theme of "Past and Present". The serviced first day cover affixed with a set of four pairs of tête-bêche stamps, each in different designs, presents the stamps printed with an upright image attached to an inverted one, creating a reflection of the scenic Victoria Harbour that makes this series exceptionally collectible.

Starting from tomorrow, this set of special stamps and associated philatelic products, including a first day cover, mint stamps, a souvenir sheet, se-tenant stamps, a presentation pack, a serviced first day cover and postage paid picture cards, will be placed on sale at post offices.

Information about this special stamp issue and associated philatelic products is available on the Hongkong Post Stamps website

(stamps.hongkongpost.hk) or the Hongkong Post mobile app.

Hong Kong Past and Present Series : Victoria Harbour



Mint Stamps.



Souvenir Sheet.

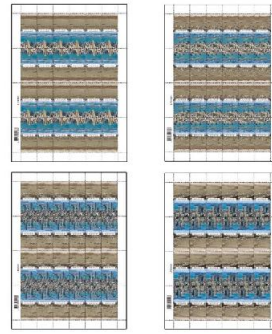


Special Postmark.



Colour Postmark.

Hong Kong Past and Present Series : Victoria Harbour



Stamp Sheets.

(Pane of 24 stamps, arranged in "Tête-bêche" format)

Hong Kong Past and Present Series : Victoria Harbour



Se-tenant Stamps.



Se-tenant Stamps Sheet.

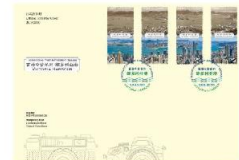
Hong Kong Past and Present Series : Victoria Harbour



Blank First Day Cover.

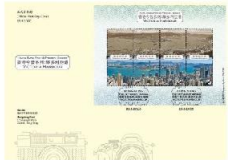


Serviced First Day Cover affixed with a set of 4 Stamps and date-stamped with associated special postmark.



Serviced First Day Cover affixed with a set of 4 Stamps and date-stamped with associated colour postmark.

Hong Kong Past and Present Series : Victoria Harbour



Serviced First Day Cover affixed with a Souvenir Sheet and date-stamped with associated special postmark.



Serviced First Day Cover affixed with Souvenir Sheet and date-stamped with associated colour postmark.



Serviced First Day Cover affixed with a set of Tête-bêche Stamps and date-stamped with associated special postmark.



Serviced First Day Cover affixed with a set of Tête-bêche Stamps and date-stamped with associated colour postmark.

Hong Kong Past and Present Series : Victoria Harbour



Presentation Pack (Cover) with an open flap.

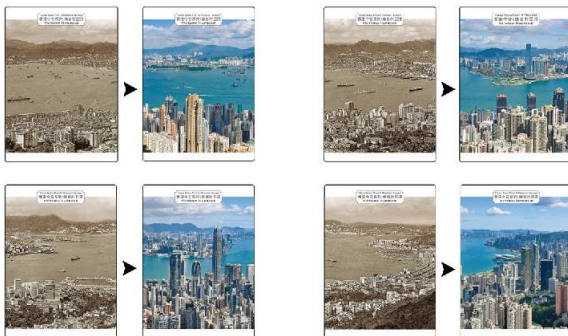


Presentation Pack (Inside).



Presentation Pack (Back).

Hong Kong Past and Present Series : Victoria Harbour



A set of 4 Postage Prepaid Picture Cards with lenticular effect (Air Mail).