

Europe's environmental footprints exceed several safe limits



A new joint EEA-FOEN report '[Is Europe living within the limits of our planet?](#)' explores two key questions related to Europe's long-term sustainability ambitions. The first question is how to define a 'safe operating space' for Europe where all humanity can continue to develop and thrive. The second question is whether Europe's consumption, or environmental footprint, is currently smaller or larger than its estimated 'safe operating space'.

The report acknowledges that there are different ways to allocate Europe's operating space in the global context, which inevitably involve normative choices about fairness, equity, international burden sharing, sovereignty and the right for development. Based on these different allocation principles, the study arrives to a minimum European share of 2.7 %, a maximum share of 21 %, and a median share of 7.3 % of the global limits.

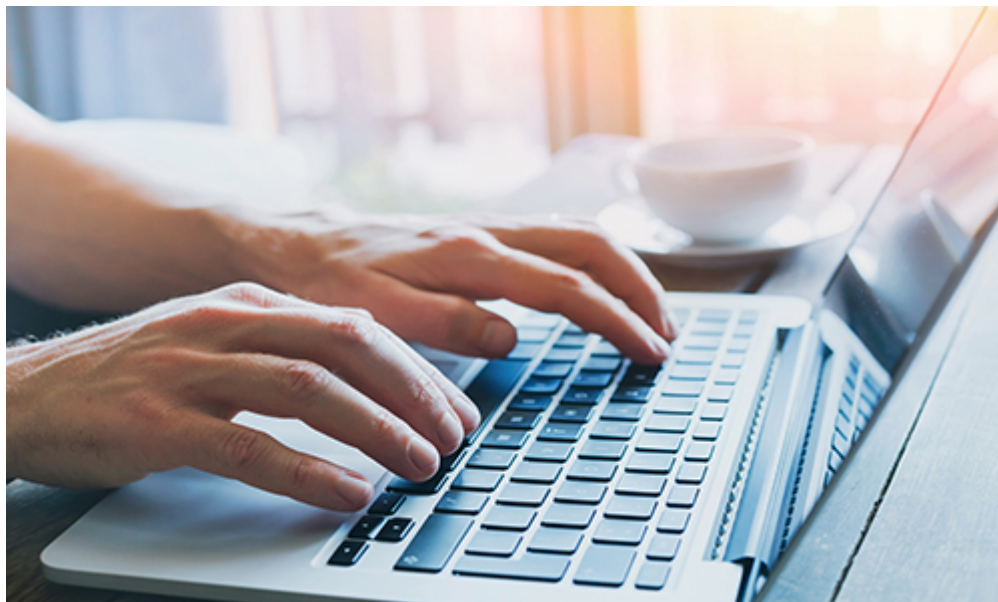
Using a consumption-based analysis for four of the Earth's life support systems, the report shows that Europe currently exceeds its safe operating space for **nitrogen cycle** by a factor of 3.3; **phosphorous cycle** by a factor of 2.0, and **land system change** by a factor of 1.8. Conversely, Europe does live within its limits when it comes to **freshwater use**, although problems with overconsumption and water scarcity remain locally and regionally.

The report also includes a case study of Switzerland's biodiversity footprint. Considering the potential for global species loss because of land use, and by using an equal share of land use per capita, the Swiss biodiversity footprint exceeds the threshold value by a factor of 3.7.

International trade mark application or registration – E-mail for electronic communications

April 17, 2020 [About the EUIPO](#)

International trade mark application or registration – E-mail for electronic communications



Due to the suspension of postal service in Switzerland caused by the COVID-19 outbreak, the World Intellectual Property Organization (WIPO) [has announced](#) that is not able to send or receive communications by postal mail until further notice.

In order to facilitate **electronic communications** under the Madrid System with applicants, holders and representatives, WIPO has asked the EUIPO for access to e-mail addresses from applicants who have based their International Application on a European Union Trade Mark (EUTM). The EUIPO will contact relevant applicants regarding the e-mail addresses available in the [User Area](#). For further information, contact us at information@euipo.europa.eu.

[Update from the Executive Director of EUIPO](#)

Please enable JavaScript to view the page content.
Your support ID is: 4574865371273391132.

This question is for testing whether you are a human visitor and to prevent automated spam submission.



What code is in the image?

submit

Your support ID is: 4574865371273391132.