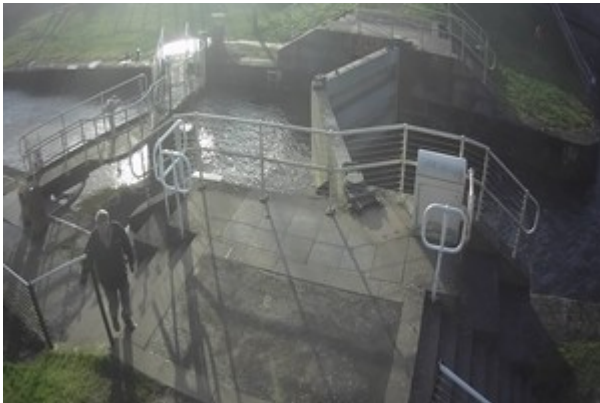


Environment Agency protects thousands from flood devastation as Storm Eunice batters the Severn Estuary

Press release

Powerful flood defences along Severn Estuary stand up to full force of Storm Eunice.



The Environment Agency's flood gate at Lydney

- Hundreds of Environment Agency officers prepare barriers and pumps ready to protect communities
- More than 2,000 homes and businesses along Severn Estuary avoid devastation of flooding

Early action by the Environment Agency has protected thousands of homes and businesses along the Severn Estuary from the devastation of flooding as Storm Eunice hit the West.

Environment Agency operatives worked around the clock to make sure flood defences along the estuary were braced for the tidal surge caused by the gale force winds on Friday morning.

Powerful flood defences and gates at Avonmouth, Lydney, Sharpness and Epney worked to deflect the full force of the tidal surge along 80 miles of the estuary and reduced the risk of flooding to nearby communities.

Preparations included:

- More than 100 Environment Agency staff out on tidal watch at critical points to ensure flood barriers were prepared for the worst of the tidal surge
- 15 high-volume pumps were ready to be deployed from the Environment Agency's Gloucester Depot
- 10 Severe Flood Warnings issued by the Environment Agency urging people

to take action

Environment Agency Operations Manager Anthony Perry said:

The predicted tidal surge along the Severn Estuary from Storm Eunice had the potential to have a significant impact on properties along the Severn Estuary and we took every precaution to make sure we were prepared for the worst scenario the storm could bring.

Our flood defences stood up to the challenge and provided valuable protection to more than 2,000 homes and businesses along the estuary.

Without the investment of these defences many communities could have been flooded and faced weeks before being able to return to their homes. Instead, residents faced minimal disruption and businesses are able to carry on their operations.

You can check your flood risk, sign up for free flood warnings and keep up to date with the latest situation at <https://www.gov.uk/check-flood-risk>, call Floodline on 0345 988 1188 or follow @EnvAgency on Twitter for the latest flood updates.

ENDS

- The Environment Agency planned for the worst scenario as there was a real risk to life. Fortunately the tidal surge along the Severn Estuary was not as high as predicted although still posed a significant threat of flooding.
- In the 2020 Budget the Government doubled its investment in flood and coastal erosion risk management in England by committing a record £5.2 billion over the next 6 years. This long-term commitment will better protect hundreds of thousands of properties, including homes, businesses, schools and hospitals.
- For every £1 spent improving protection from flooding and coastal erosion, we avoid around £5 of property damages. This long-term commitment will make homes, businesses and infrastructure more resilient to the increasing impacts of climate change.
- This record investment will help the nation 'build back better' by making properties more resilient to flooding, and 'build back greener' by working with nature to make us more resilient to climate change.
- The Capital Programme will also prove central to the Environment Agency reaching its target of becoming a net zero organisation by 2030 – by embracing innovative ways of working that minimise the carbon emissions we produce, and the carbon produced through our supply chain, when we build flood defences.
- The investment across the country will help enable communities adapt to the future risk of climate crisis.
- Using partnership funding enables us to secure investment beyond levels affordable to central government alone and enables more local choice,

while encouraging innovative, cost-effective options where communities may play a greater role.

Published 18 February 2022