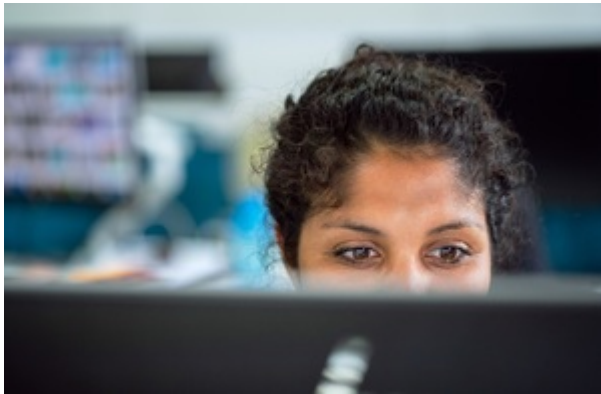


Civil news: launch of new excel escape case claim forms

News story

Excel versions of the EC Claim1 forms are available online for use by providers.



We have developed Excel versions of the EC Claim1 forms for providers to use when submitting escape case claims for controlled work matters.

The file format change will allow us to speed up the processing of your submission. But you will find that there is no change to the:

Accessibility

The new standard versions of each escape case claim form include merged cells. So, we are also uploading accessible versions without merged cells. This should assist people who may be using a screen reader.

Does this affect processing of work?

There are no changes to the way your work will be processed. Providers should continue to submit escape case claims in the usual way using the updated forms and relevant supporting documents. The previous Word-based versions of the form have been removed.

Mandatory to use new forms

Using the Excel escape case claim forms will be mandatory for submitting your claims for controlled work from 1 August 2022. We are asking providers to stop using the old Word forms as soon as possible.

Further information

[Escape fee case claim forms](#)

[Escape cases electronic handbook](#) – for guidance on making claims

mhu-ec@justice.gov.uk – email for advice on using Excel claim forms

Published 24 June 2022