

Super fine systems

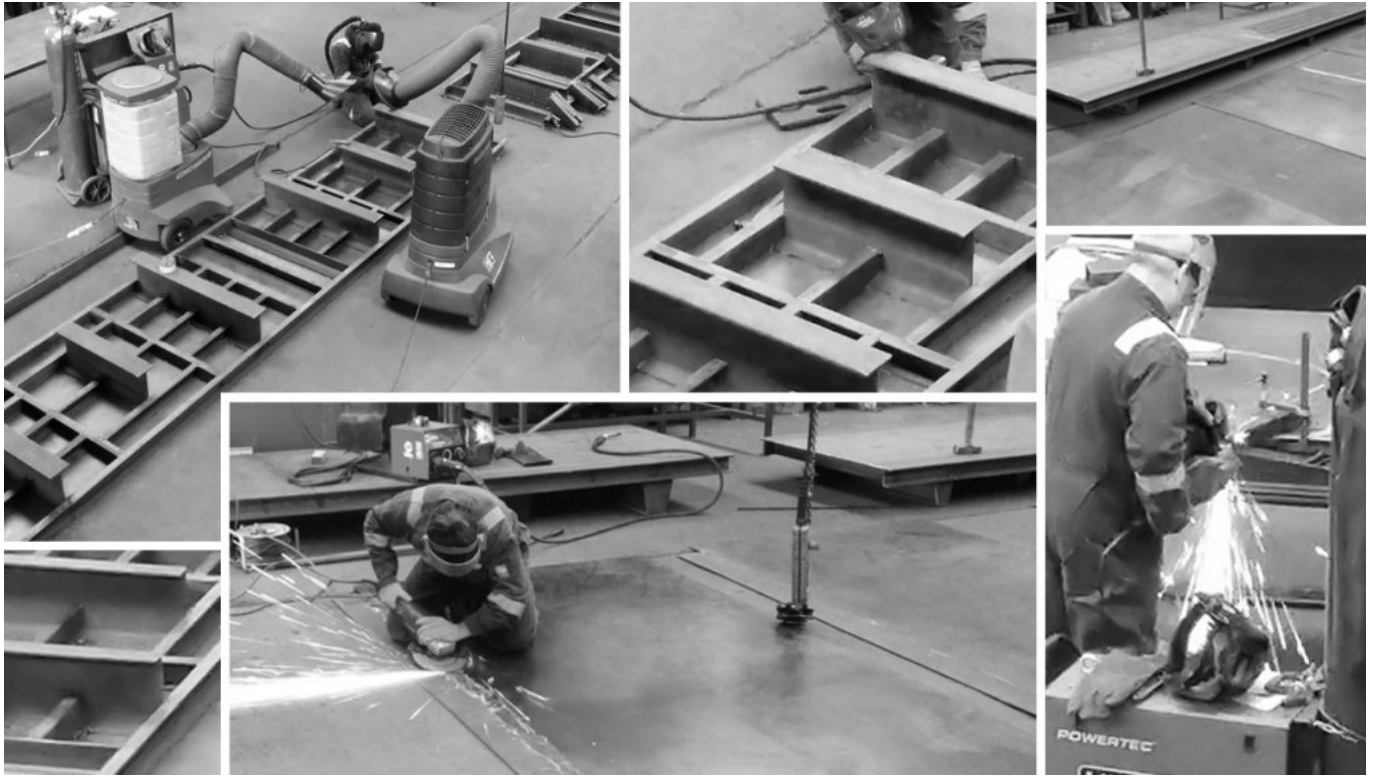
welters under active pressure to supply the nation with its industrial requirements whilst designing super fine systems. It will be a very busy weekend!



The post [Super fine systems](#) appeared first on [Latest News](#).

New Tooling

welters prototyping facility working flat out on new tooling to keep pace of new product demand instigated by our progressive design department.



The post [New Tooling](#) appeared first on [Latest News](#).

[A Moment of Magic](#)

A moment
of magic caught amongst the industrial chaos on one of our sites, proving
that beauty can be found anywhere, if you look beyond the surface.



The post [A Moment of Magic](#) appeared first on [Latest News](#).

[Massive Investment in Advanced Tooling for Manufacturing Response](#)

Due to the continuously increasing demand in our production throughput to serve the industry in these most challenging times, **welters® organisation** are increasing their capabilities in production to the extent that output is enhanced through technology to enable our support to the market place to be appropriate to current need.

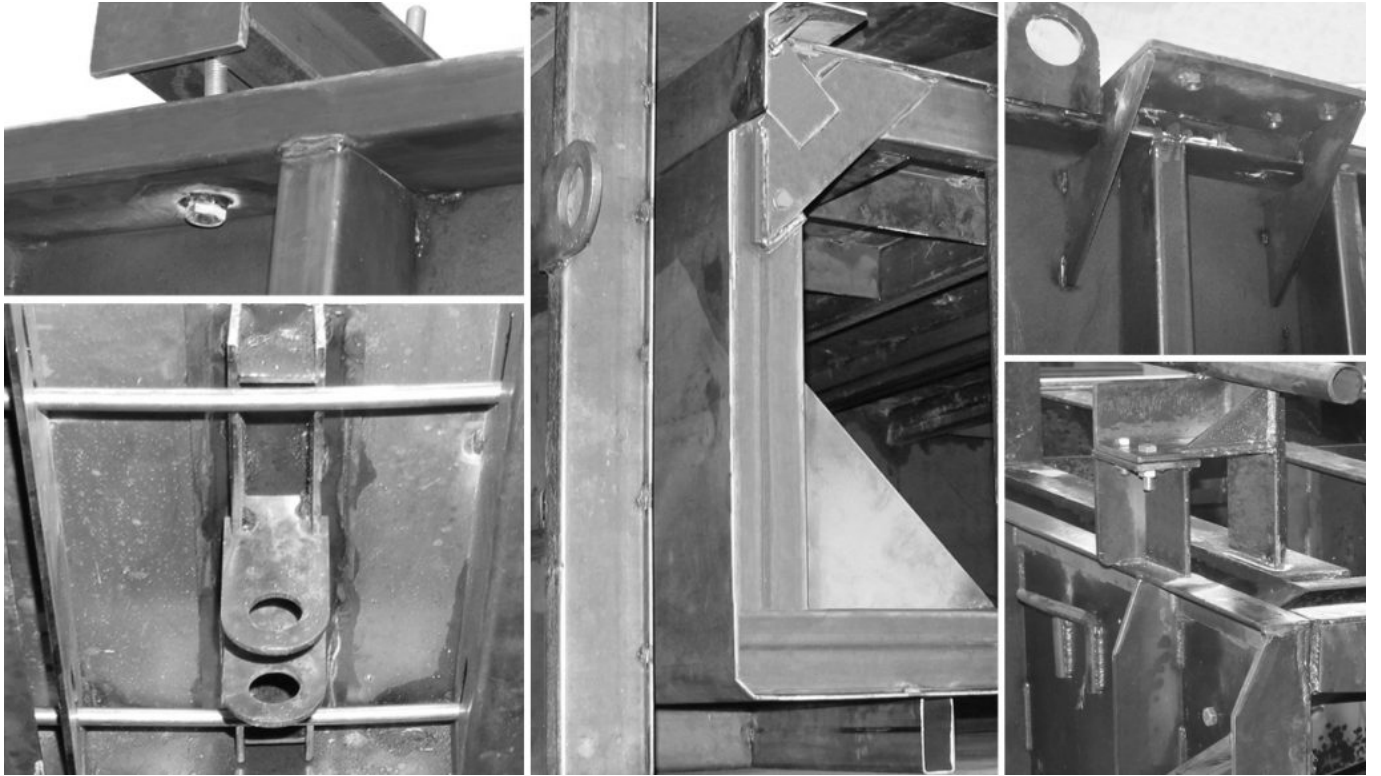
Output increase in response to requirement has received investment increase to facilitate real capability from all **UK manufacturing expertise**.



The post [Massive Investment in Advanced Tooling for Manufacturing Response](#) appeared first on [Latest News](#).

[Manufacturing Emphasis](#)

welters are constantly increasing and updating all tooling to support the fervent supply chain demand for components throughout this challenging era.



The post [Manufacturing Emphasis](#) appeared first on [Latest News](#).