

# welters world™

*A Government World Supplement*

*October - December 2023*



# welters world™

News and product updates from **welters®** organisation worldwide. A place to share our interesting work in agriculture with our heritage herds, historic site restoration, furniture design, stone manufacturing and much more.

# welters®

ORGANISATION  
WORLDWIDE

Design and Innovation





# The Originators of Economic Advancement

As a leading force in the design and installation of innovative burial and memorialisation systems, **welters®** prides itself on creating viable working partnerships with Local and private Burial Authorities to achieve long term solutions and economic advancement. Before the advent of our proprietary interment and memorial systems, many local Authorities considered cemeteries to be an unprofitable burden and a drain on resources. With the introduction of WOW burial

chambers, memorial systems and mausolea facilities, the fortunes of these cemeteries has been transformed into aesthetic and viable commodities generating real income and enhancing service provision.

**welters®** have been developing and manufacturing products for a wide variety of purposes for over 30 years in this industry. By combining traditional skills such as sculpture and art with modern computerised design, the company has established the ability to produce high end results at an extremely competitive output. Using this marriage of 'old and new' the company can create modern design protected and proprietary alternatives to historically high cost processes, delivering low cost products of good design and build.



# welters® are acclaimed manufacturers of the finest quality, low price, pre-emptive interment & memorial design systems

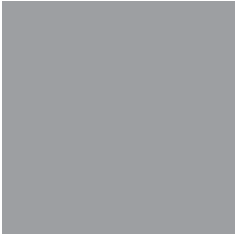
[www.welters-worldwide.com](http://www.welters-worldwide.com)



The largest  
variety of  
interment  
solutions - in  
stock







- A welters® Cemetery Village® typically comprises of a combination of above and below ground interment provisions for full body and/or cremated remains
- They can include family and community mausolea, burial chambers, sarcophagi, cremation memorials and more



## Community & Individual Family Interment Solutions



Please visit our website  
to view examples of  
welters® Mausolea  
Designs

[www.welters-worldwide.com](http://www.welters-worldwide.com)

# welters® Cemetery Village

An example Cemetery Village work in progress, incorporating below ground burial chambers, memorials, mausolea & ashes interment niches. The scheme produces full body and cremated remains interment opportunities within an attractive, peaceful setting.





# Memorial Options

Environmentally advanced memorial options, available on a one-off bespoke basis or in large order quantities. Memorials can be installed over multi-interment burial chamber options if required.



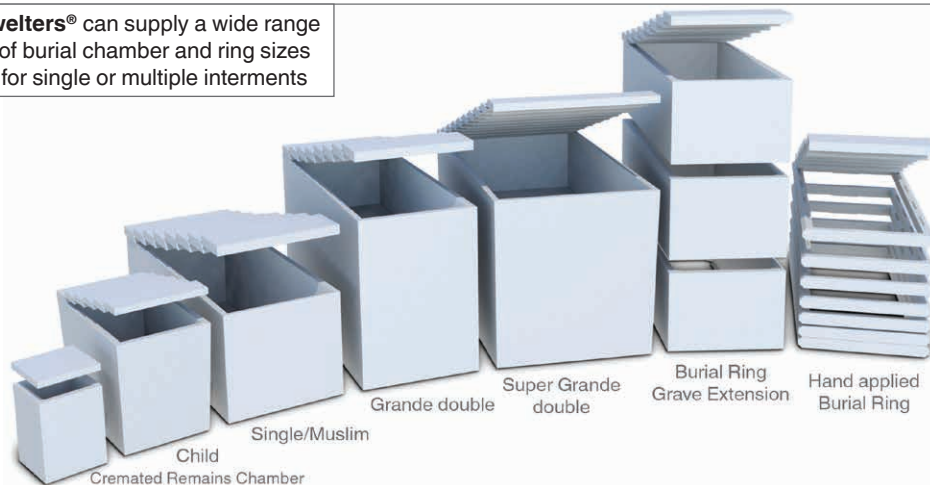
# Multiple Interment Burial Systems

Multiple interment burial systems installed partially above ground. The layout configuration of these units reflects the 12 points of a clock, enhancing the round area of land and creating 36 additional full body interment opportunities.





**welters®** can supply a wide range of burial chamber and ring sizes for single or multiple interments



## welters® Burial Chamber Range

Please visit our website for further information



A large stock of Muslim/ single burial chambers ready for installation



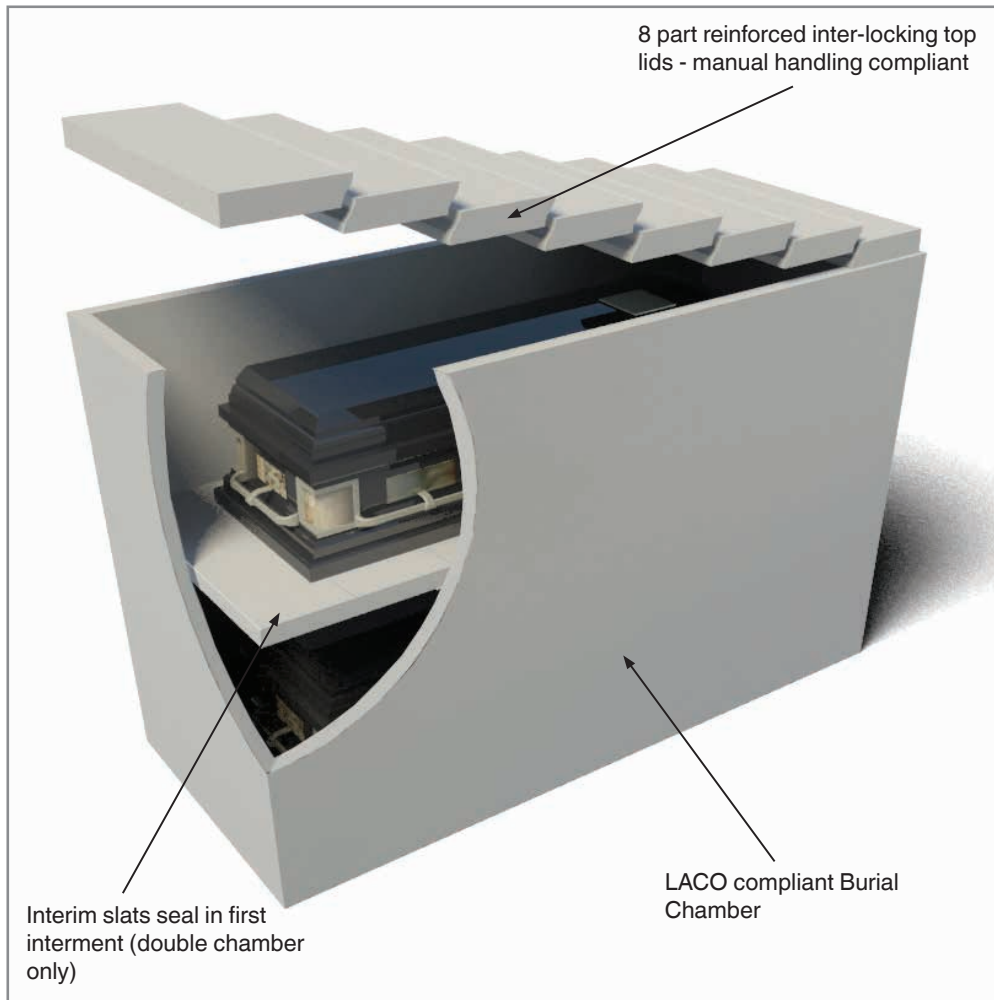
An example installation in progress of **welters®** double interment burial chambers

# Muslim Interment Solutions

welters® supply single interment burial chambers and rings (a chamber with no bottom) which are suitable for Muslim interment. Please contact us for further information.



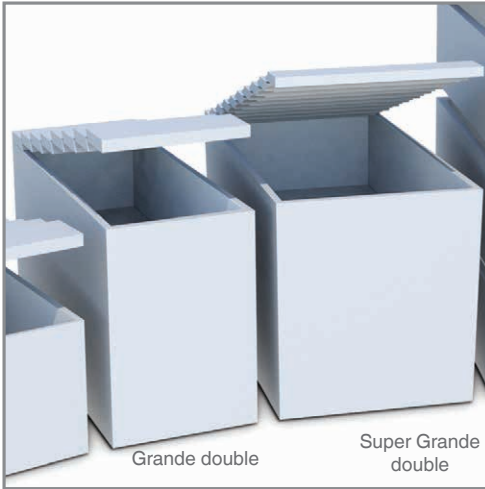




## Grande Double Burial Chamber

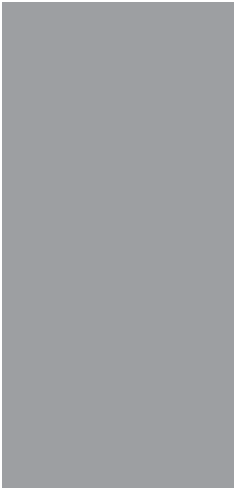
- Reinforced concrete burial chamber for full body interment
- Double depth grande chamber offers two interment opportunities
- Can be extended above ground to provide additional space if required





## Super Grande Double Burial Chamber

- Reinforced concrete burial chamber for full body interment
- Extra large Double depth grande chamber offers two extra large interment opportunities for over size caskets





- The 720mm extension ring affords the opportunity to offer full body interment with earthen base



## 720mm Extension Ring

- These units can also be utilised to extend the height and number of interments of welters® single and grande double chambers





# 100mm Extension Ring

- The 100mm extension ring affords the opportunity to offer full body interment with earthen base
- Can also be utilised to extend the height and number of interments of welters® single and grande double chambers



- These units can be installed by hand where access to the grave is not possible with machinery



- Any number of units can be used to reach required height/ depth





**welters**<sup>®</sup>  
ORGANISATION  
WORLDWIDE  
Design and Innovation

# Graphic *ART*<sup>™</sup>



**welters®**  
ORGANISATION  
WORLDWIDE  
Design and Innovation

## welters® Woodland Orb Memorials

Available in 1, 2 or 4  
cremated remains interment  
options or as a memorial  
only. Can be supplied with  
embellished stone or granite  
tablets.

Made in Britain.





# Woodland Orbs set in woodland at Whithaugh

**welters**<sup>®</sup>  
ORGANISATION  
WORLDWIDE







**welters®**  
ORGANISATION  
WORLDWIDE  
Design and Innovation

## welters® Orb Memorials

Available in 1, 2 or 4 cremated remains interment options or as a memorial only. Can be supplied with embellished stone or granite tablets.

Made in Britain with British Stone and British Manufacturing teamwork.



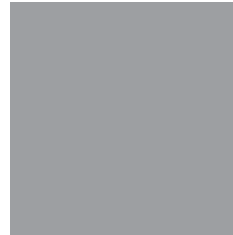




## British Master Masons - Rural Stone Craft.

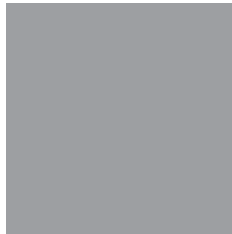
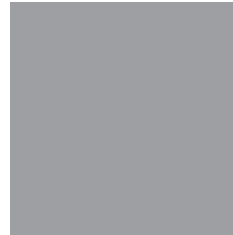
These images show a number of our stone products mid production.

The bright sun may make the images look warm and inviting but this was a cold morning. Work continues nonetheless.





Our Stone Memorial Orbs have proved to be a successful product for many years now which allows us to view and analyse how they are aging.



You can see that the orbs are gaining extra character as they mature in their environment.





Dependent upon their location and the nature that surrounds them, the surface of the orbs can take on a mottled, extremely attractive, appearance.

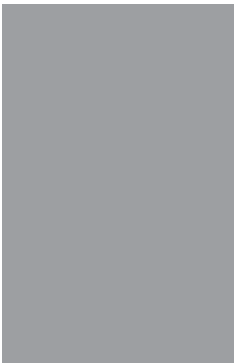


No two orbs age exactly in the same way and we will often find two orbs sitting side by side and looking completely different.

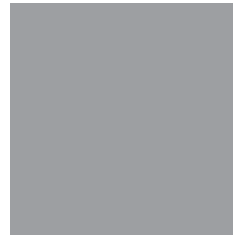
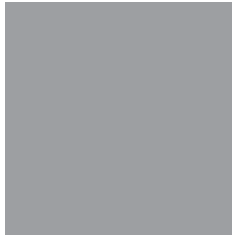




Whilst we are happy with the clean and attractive finish of the orbs when supplied, we also marvel at the unique character of each orb as it matures.

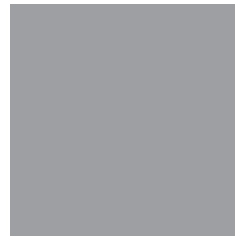


We encourage the growth of plants and wild flowers behind and amongst the orbs. We enjoy experimenting with different environments to survey how they interact and affect the stone.



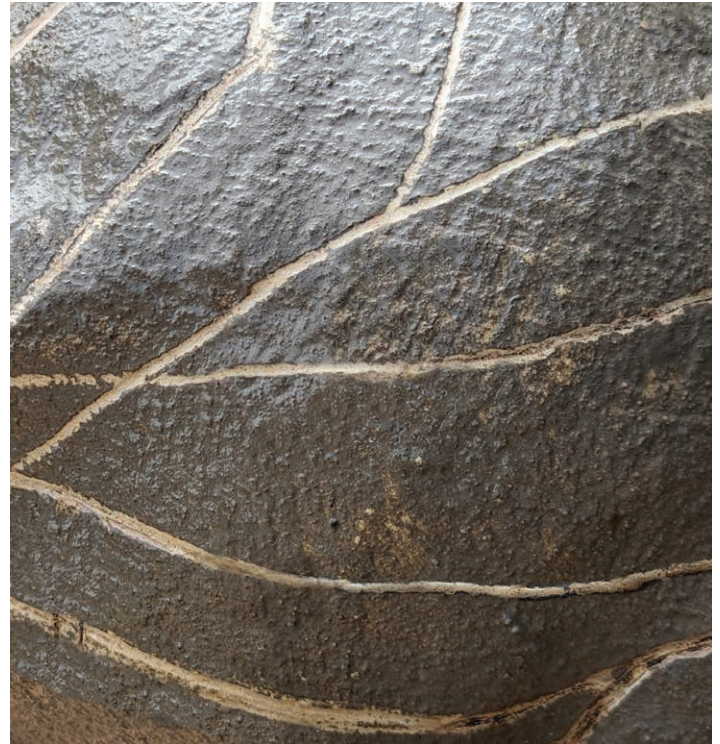


As with our Stone Memorial Orbs, our Border Stone Orbs are full of character and are one of our most eye-catching products.



**welters®** Border Stone is incorporated in product produced by **welters®** under their Environmental Umbrella which is renowned globally.

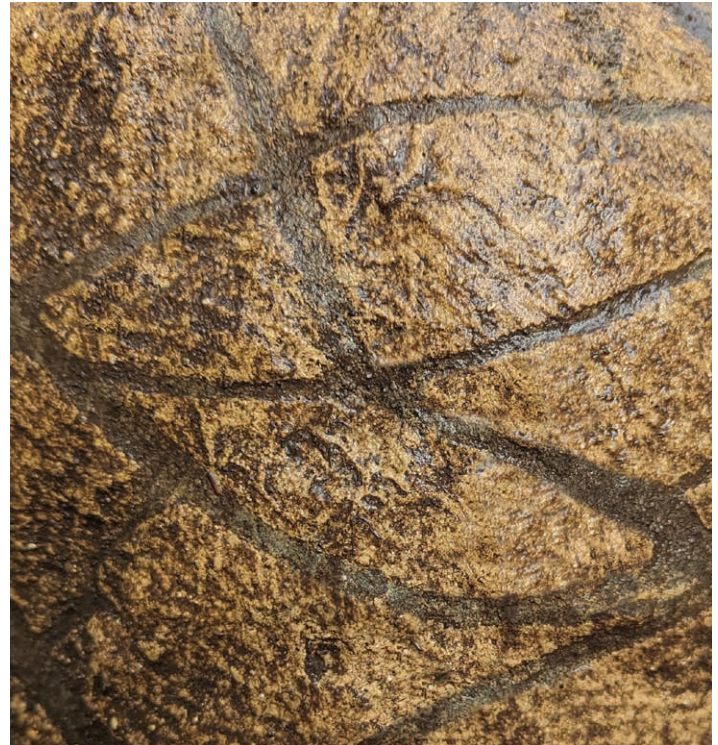
Border Stone is not only a fully matured natural phenomena but when utilised with Environmental elements and **welters®** craft experience, the full potential benefit of the concept is revealed.





**welters®** Border Stone, which is deposited in almost any colour, is often revealed with bold stripes in a magical strata or web of glorious artistry which remains forever, and only muted over time by nature itself.

A truly unique & priceless result enhanced only by the retardation of the ice cap so many moons ago.







# Nothing is Impossible

## Natural Heritage by Design

## & Experienced Wisdom

Climate change facilitates  
Border Stone technology

**welters**<sup>®</sup>  
ORGANISATION  
WORLDWIDE



# The Magic of Natural Heritage by Design & Experienced Wisdom

**welters**<sup>®</sup>  
ORGANISATION  
WORLDWIDE









# FLOOD PROTECTION

Attenuation, Defences, Collection & Distribution



Water control & management  
with environmental understanding  
[www.welters-worldwide.com](http://www.welters-worldwide.com)

© welters® organisation worldwide 2022. All rights reserved



**welters**®  
ORGANISATION  
WORLDWIDE  
Design and Innovation

**Graphic ART**™





Tree of Life fountain & static features incorporating inscribed leaf tributes to loved ones



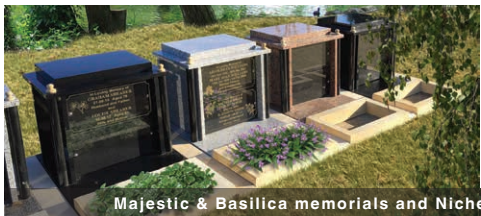
Side and front charging mausolea units for installation in numerous configurations



Below ground ashes interment options



Memorial orbs for ashes interment



Majestic & Basilica memorials and Niche facilities for above ground ashes interment



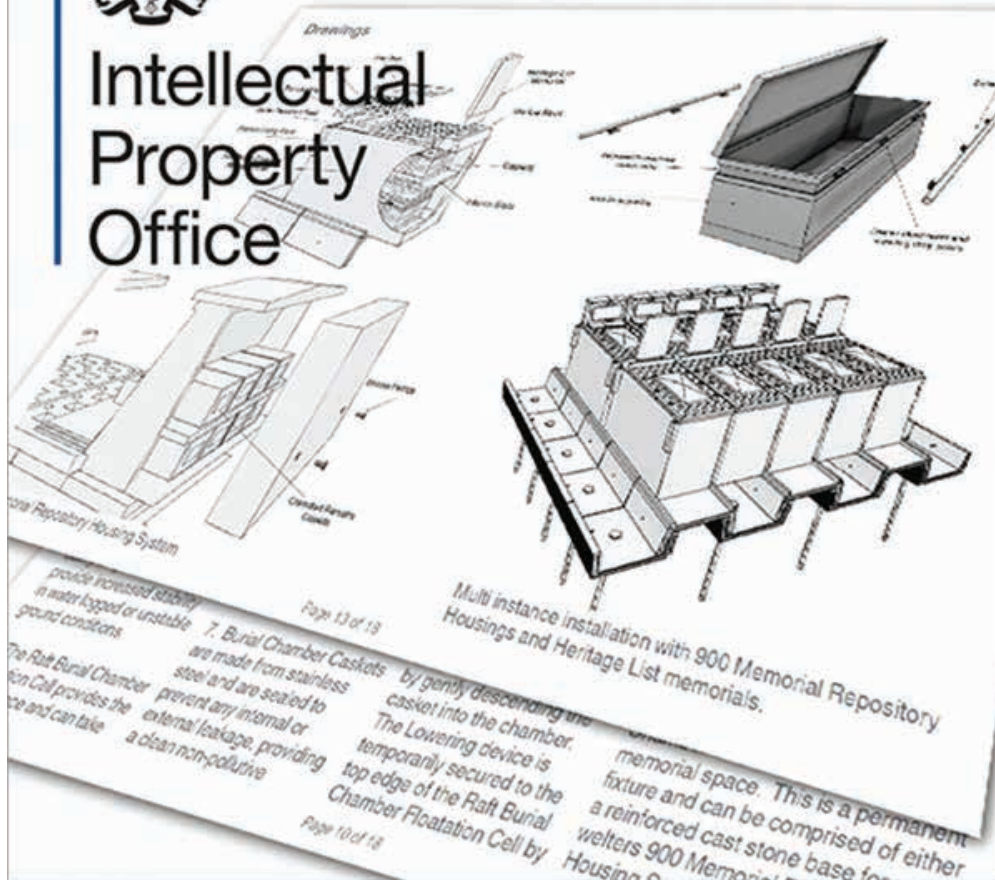
**welters<sup>®</sup>**  
ORGANISATION  
WORLDWIDE  
Concept Originators



Visit us at  
[www.welters-worldwide.com](http://www.welters-worldwide.com)  
Or contact us via email:  
[admin@welters-worldwide.com](mailto:admin@welters-worldwide.com)



# Intellectual Property Office



**welters**<sup>®</sup>  
ORGANISATION  
WORLDWIDE  
Design and Innovation

## Intellectual Property

**welters**<sup>®</sup> are continually investing in and developing new and innovative products and systems to address the needs of the industry.

Our designs continue to influence the sectors we are involved in and we work closely with the Intellectual Property Office to ensure our unique position as market leaders is maintained.

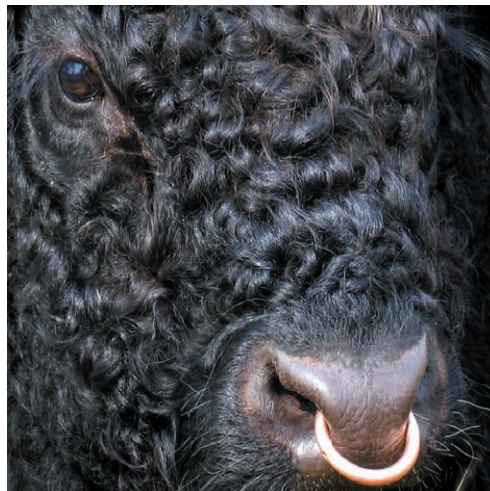


# Historic Site Restoration

Environmental and ecological research

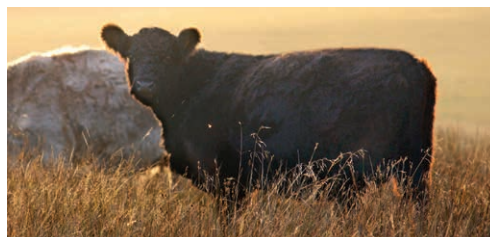
whithaugh  
TOWER HOUSE





**welters<sup>®</sup>**  
ORGANISATION  
WORLDWIDE  
Design and Innovation

**welters<sup>®</sup>** Galloway  
Heritage Herd  
The Finest Pedigree



Watch out for our next edition  
as we intend to dedicate  
a large percentage of our  
offering to our Black and  
White Galloway herds



Merry Christmas & Happy New Year  
from all of us at **welters**®

**welters**®  
ORGANISATION  
WORLDWIDE



