

welters world™

A Government World Supplement

Autumn 2022



welters world™

News and product updates from **welters®** organisation worldwide. A place to share our interesting work in agriculture with our heritage herds, historic site restoration, furniture design, stone manufacturing and much more.

welters®

ORGANISATION
WORLDWIDE

Design and Innovation





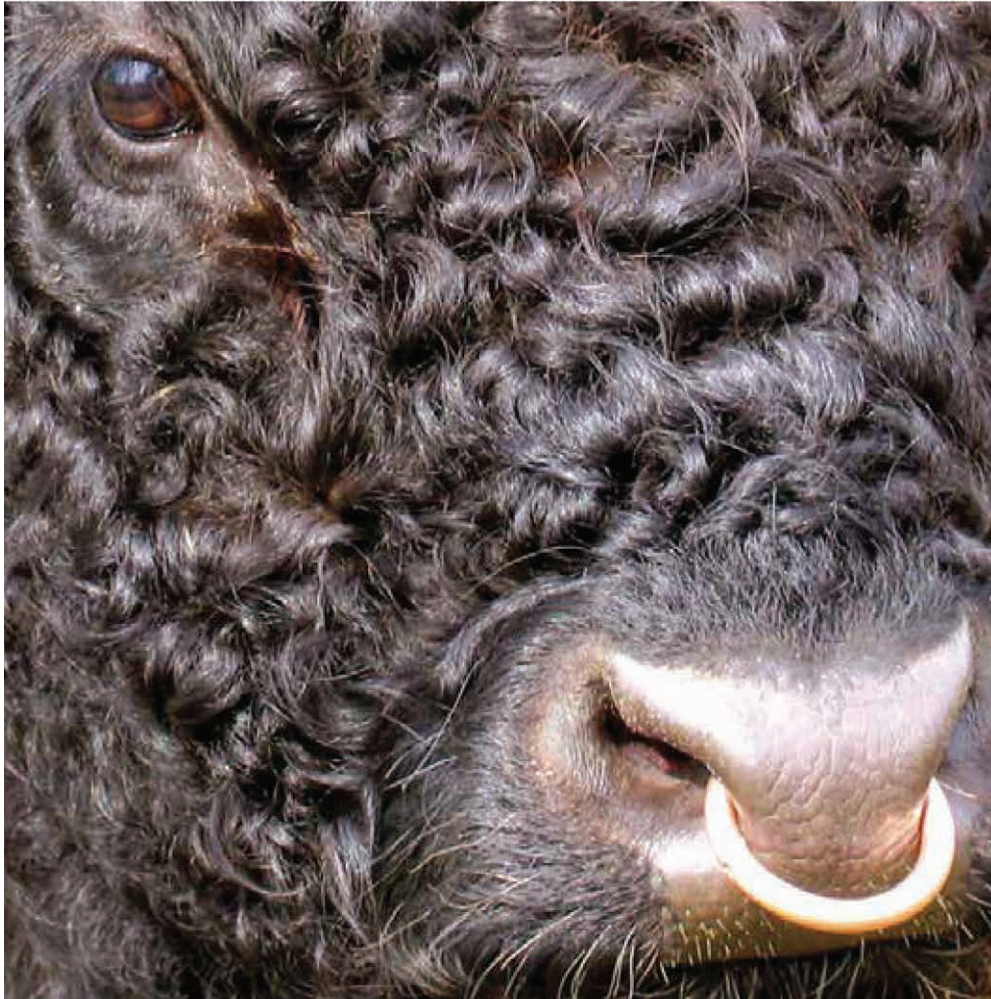
The Ancient Sessile Oaks of Whithaugh

welters®, are the creators of the Cemetery Village® Systems which embrace the best use of land and environmentally sensitive solutions for burial and cremated remains interment and will maintain free of charge a commemorative register and password protected virtual cemetery for 'rights owner' use. **welters®** will also make an absolute commitment to plant and maintain one tree for every 'burial rights owner' or deceased from at maximum 6 months following the date of interment into a **welters®** facility or registration which ever is the later.



Tree planting schemes are currently in the Scottish Borders and Cumbria.

In addition to the commitment to plant the renewable tree resource, **welters®** will also, at no cost to the rights owner, stock the burns and becks within the tree planting scheme areas with Brown trout smolt and parr thus protecting this most important British indigenous species.



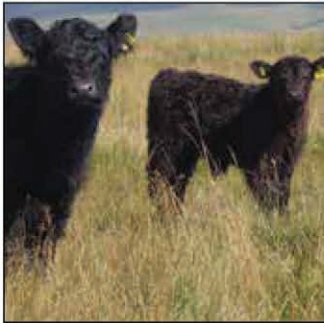
welters[®]
ORGANISATION
WORLDWIDE
Design and Innovation

Green Agriculture & Land Management

Galloway Heritage Herd

The establishment of the **welters[®]** 'Heritage' Pedigree Herd of Galloway cattle is and will continue to be one of the enduring and most rewarding aspects of the Land Based enterprises. The Genetic design of the Native Scottish outlying breed with countless benefits was in danger of diminishment.

The 'Heritage' Herd has Gene design from the finest Global Pedigrees to protect and perpetuate the finest Scottish Native breed which thrives on the hill land, heathland herbs and water meadows of our diverse landscapes.



Galloway Heritage Herd

welters® continues to own and develop the Heritage Galloway Herd of single suckle cattle. This magnificent family has a historic pedigree feeds from natural grasses, heathers mosses and water meadow plants. The Galloway is one of the oldest and purest of our native cattle breeds. They are famed for their hardiness and can live off the poorest of land. The Galloway female is the ideal suckler cow and will produce an excellent beefy calf which is in great demand by people requiring the highest quality, natural grown beef. Galloway Cattle have a great deal to offer and will fit into any agricultural system, either a traditional hill farm or low land management plan. Galloway popularity is growing due to the increased interest in British Native breeds and environmental issues.

At the 2009 Royal Highland show, the Galloway breed won all the major trophies including the individual, native interbreed, interbreed and pairs competitions. Never before has one breed dominated all the cattle championships at Scotland's premiere event.



welters[®]

ORGANISATION
WORLDWIDE
Design and Innovation
**Green Agriculture &
Land Management**

White Galloway Heritage Herd

The White Galloway Heritage herd is a recent addition to **welters[®]** agricultural programmes. As part of their commitment to protecting native species and resources in the UK the White Galloway has a heritage that stretches back to the white wild cattle of ancient Britain.

welters[®] are members of the Rare Breeds Survival Trust





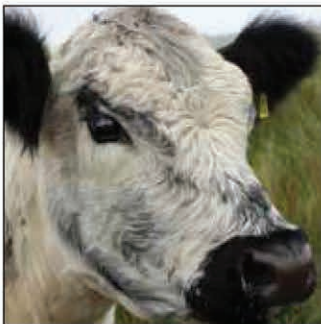
White Galloway Heritage Herd

The colour pattern of the White Galloway is mostly white, with its colour restricted to its ears, feet, and around its eyes. They will also often have colour on their poll, tail, and udder. The White Galloway breed originates from the Wild White cattle of ancient Britain.



The Galloway is naturally hornless, and instead of horns has a bone knob at the top of its skull that is called a poll. This breed's shaggy coat has both a thick, wooly undercoat for warmth and stiffer guard hairs that help shed water, making them well adapted to harsher climates.

welters® Galloway herds of Whithaugh forms part of their mission and drive for research and development in the protection of native species and natural resources



The **welters®** White Galloway Heritage Herd and the Green Agriculture and Land Management programmes are elements within the Biodiversity and Specie Protection and Enhancement Programmes.

Inscription and Signage Services

VOLERTI BENE È STATO FAC
DIMENTICARTI IMPOSSIBI
VIVA SAN VINCENZO FERRI

...ions, and
ver in my heart.
est love always,
x Derek xxxx
st in Peace

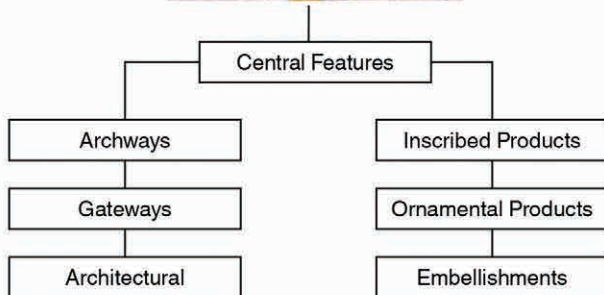
welters® inscription and signage service forms part of their support services package which is offered to clients and users of their products and systems.

Inscriptions can be applied to a range of materials including granite, stone and wood. Ornaments and photo plaques are also offered with this service.

...ions, and
ver in my heart.
est love always,
x Derek xxxx
st in Peace

*Winter is on my head but
eternal Spring is in my heart*

Tree of Life gives inspiration to all



Keith Walters first conceived the idea of a communal memorial based on the ancient concept of a 'tree of life' back in 1998.

The design alludes to the interconnection with our world and acts as a metaphor for rebirth and the evolution of life itself.

Over the years this concept has inspired a range of interrelated designs based on the tree itself and the nature that is dependent upon it.

The Tree of Life continues to inspire both internally and externally within the Industry.



Tree of Life







Tree of Life Fountain

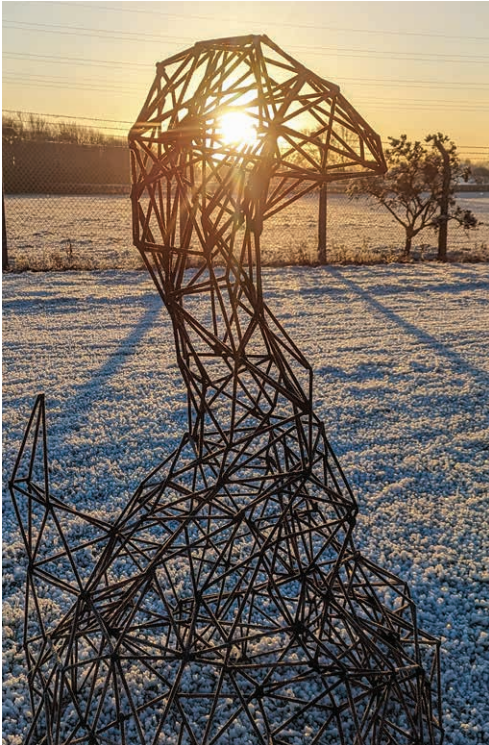




Structural Art



Using **Technology**
to **Re-purpose**
material, **Creating**
structural **Art**,
reflecting **Nature**



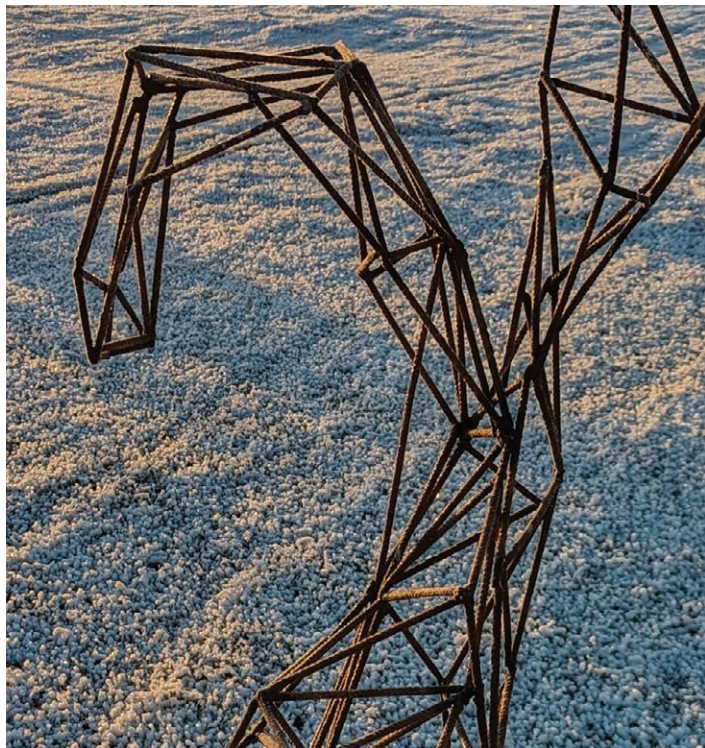
Structural Art





Structural Art







welters® strive to merge nature and technology, creating purposeful and unique products. These orbs are covered in ferns and moss, slowly camouflaging with their surroundings.

This tree has been felled by the savage storms that have swept across the Borders. welters® have seized the opportunity, creating beautiful products from the resultant material.



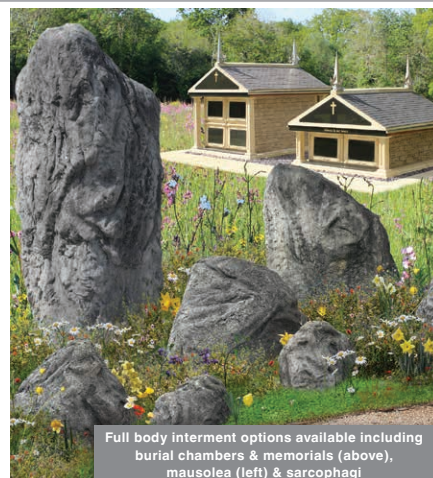
welters®

ORGANISATION
WORLDWIDE

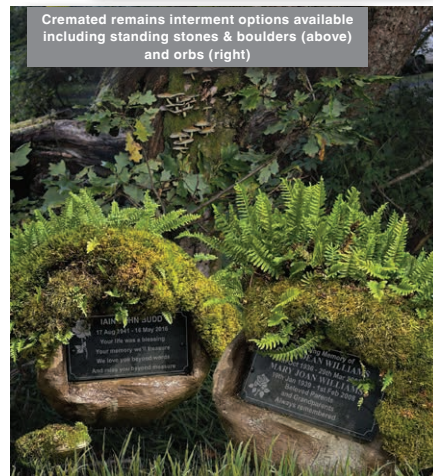
Concept Originators

www.welters-worldwide.com
admin@welters-worldwide.com

Intellectual Design, Production & Support Services



Full body interment options available including
burial chambers & memorials (above),
mausolea (left) & sarcophagi



Cremated remains interment options available
including standing stones & boulders (above)
and orbs (right)



NATURE & TECHNOLOGY

In conjunction with our Made in Britain philosophy, welters® embrace nature,
developing & supplying products, for full body and cremated remains
interment, that incorporate and harmonise with our natural environment
Please contact us for more information at admin@welters-worldwide.com

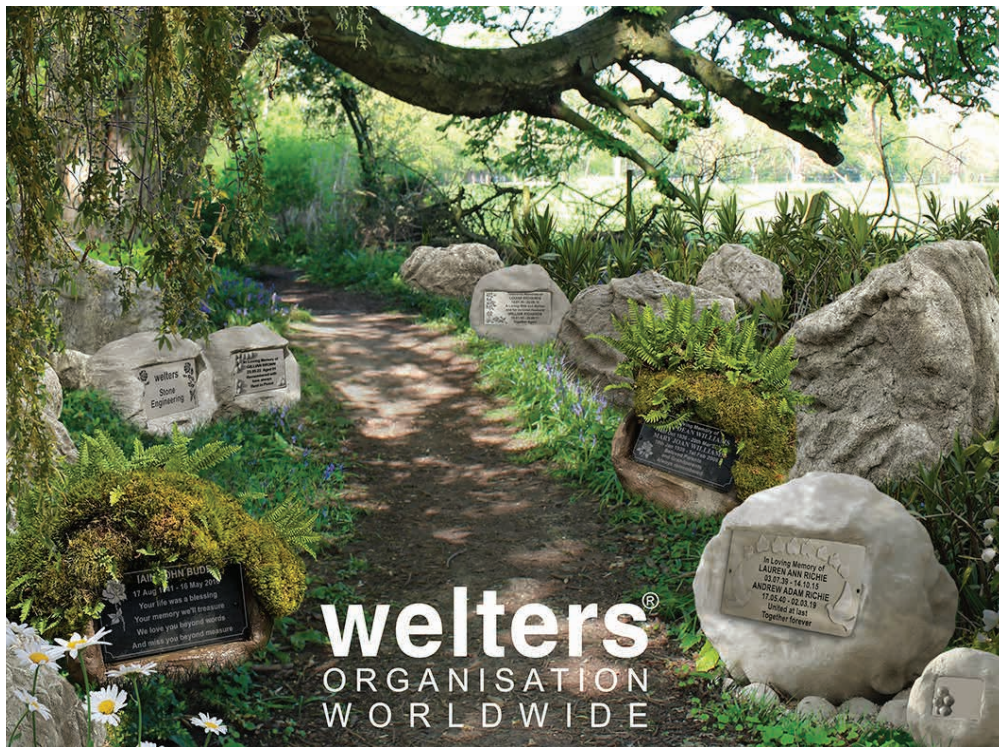
Company News - Nature & Technology

As has been part of our practise for many years, **welters**® focus with determination to embrace nature, and the environment, in our products and philosophies. This is achieved through the use of UK resources and facilities and includes the use of reconstituted materials within our manufacturing processes. We endeavour to maintain our 'Made in Britain' ethos and develop

product designs that are in keeping with our natural habitat.

welters® has always attempted to minimise imports, especially of non-environmentally friendly material, and particularly when exported from the opposite side of the globe and produced by nations which may pay less attention to environmental issues. **Welterstone** was created as a solution to this issue, producing products manufactured locally from indigenous quarried material. As a result of the success of **Welterstone**, **welters**® has not imported any material for several years.

We look forward to the continuation of the development of our range of products and materials and embrace the future wholeheartedly.



Burial Chamber Installation

A large scale burial chamber installation in progress. Double interment burial chambers installed on varying levels down an embankment.





welters[®]
ORGANISATION
WORLDWIDE
Design and Innovation

Graphic ART[™]



Module 1



Module 2



Module 3

Chiltern Stone and Timber Bench

The new Chiltern Timber Memorial Bench is now available in a range of five modules that include memorial plaques and cremation niches.

The bench is manufactured using sustainable resources and replenishable stock and is marketed as both a memorial bench and street furniture item.





Chiltern Stone and Granite Bench

The **welters®** Chiltern Memorial Bench provides a range of affordable solutions for commemorative and memorial seating arrangements.

The memorial bench collection includes a range of options beginning with the standard bench and plinth arrangement with two inscription plaques. Upgraded versions include end planters and extended base plinth.





This image shows a selection of welters standing stones and boulders. These are available for purchase for gardens, parks, cemeteries and many more options.



welters®
ORGANISATION
WORLDWIDE
Design and Innovation

Graphic ART™

ATTENUATION

Water collection, storage & distribution

Compliance blended with environmental understanding

www.welters-worldwide.com

welters[®]
ORGANISATION
WORLDWIDE

FLOOD PROTECTION

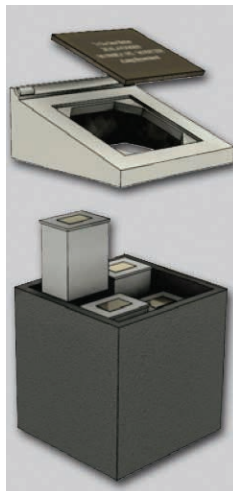
Attenuation, Defences, Collection & Distribution



Water control & management
with environmental understanding

www.welters-worldwide.com

© welters® organisation worldwide 2022. All rights reserved



welters®
ORGANISATION
WORLDWIDE
Design and Innovation

**welters® Desktop
Memorial System with or
without a below ground
chamber for interment of
cremated remains**

**Made in Britain with
British Stone and British
Manufacturing teamwork**





welters®
ORGANISATION
WORLDWIDE
Design and Innovation

Concept Originators
Inspired Architectural Artistry



Portico of Peace Feature

Attractive arches, available for memorialisation or as a decorative feature. Made bespoke to order to any dimension.



welters® Multi-Material Mausolea

With their majestic stainless-steel spires, apex roof arrangements, stone columns & facias and granite panels for inscription, welters® Family Multi-material Mausolea provide a unique and attractive interment solution. They are available in 2, 4 or 6 interment configurations.



welters® Full Body and Cremated Remains Interment Solutions

www.welters-worldwide.com



All welters® products can be sold on an individual basis or installed in any configuration to form a unique Cemetery Village®. The image on the left shows a selection of decorative stone memorial options installed over full body double interment below ground burial chambers and front charging mausolea. The image on the right shows an interesting polygon tower arrangement utilising double interment cremated remains niches as well as stone memorial orbs for cremated remains interment and our standing stones.

welters® Stone Masonry

For interment and
memorialisation

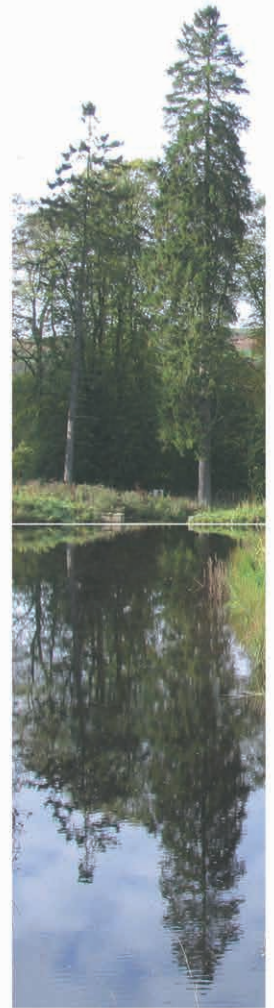


Scottish Borders glacial deposit
Ancient British through and through

Historic Site Restoration

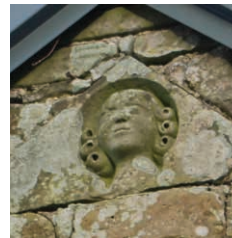
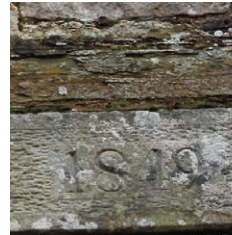
Environmental and ecological research

whithaugh
TOWER HOUSE



Whithaugh Farm Building Renovation

Following recent portfolio amendments, it is proudly announced that there will be renovation work to historic Whithaugh Farm Buildings. Further information will be forthcoming shortly.









A selection of memorial design options, installed above 2 interment burial chambers. The selection of memorials creates and interesting and aesthetically pleasing landscape.

Each memorial headstone design comes complete with a tablet for inscription purposes. The headstones are manufactured in the UK with UK sourced materials.



Each design is accompanied with a cover stone option - whether an apex pier cap, cross design or planter frame. Offering addition inscription or flower placement opportunities .



