

welters world™

A Government World Supplement

Summer 2022



welters world™

News and product updates from **welters®** organisation worldwide. A place to share our interesting work in agriculture with our heritage herds, historic site restoration, furniture design, stone manufacturing and much more.

welters®

ORGANISATION
WORLDWIDE

Design and Innovation



The Originators of Economic Advancement

As a leading force in the design and installation of innovative burial and memorialisation systems, **welters®** prides itself on creating viable working partnerships with Local and private Burial Authorities to achieve long term solutions and economic advancement. Before the advent of our proprietary interment and memorial systems, many local Authorities considered cemeteries to be an unprofitable burden and a drain on resources. With the introduction of WOW burial

chambers, memorial systems and mausolea facilities, the fortunes of these cemeteries has been transformed into aesthetic and viable commodities generating real income and enhancing service provision.

welters® have been developing and manufacturing products for a wide variety of purposes for over 30 years in this industry. By combining traditional skills such as sculpture and art with modern computerised design, the company has established the ability to produce high end results at an extremely competitive output. Using this marriage of 'old and new' the company can create modern design protected and proprietary alternatives to historically high cost processes, delivering low cost products of good design and build.



welters® are acclaimed manufacturers of
the finest quality, low price, pre-emptive
interment & memorial design systems

www.welters-worldwide.com

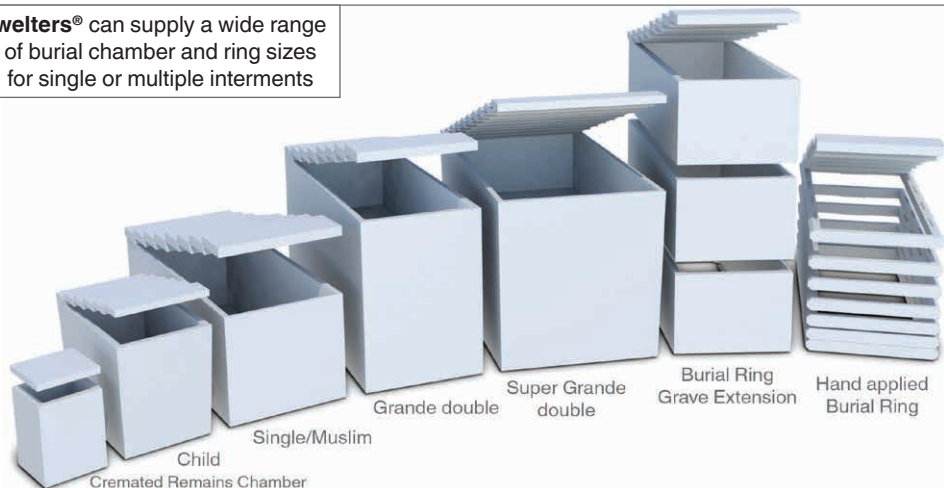
welters®
ORGANISATION
WORLDWIDE
Design and Innovation



The largest
variety of
interment
solutions - in
stock



welters® can supply a wide range of burial chamber and ring sizes for single or multiple interments



welters®
ORGANISATION
WORLDWIDE
Design and Innovation

welters® Burial Chamber Range

Please visit our website for further information



A large stock of Muslim/ single burial chambers ready for installation



An example installation in progress of **welters®** double interment burial chambers



Inscription Services

welters® inscription service forms part of their support services package which is offered to clients and users of their products and systems. Inscriptions can be applied to a range of materials including granite, stone and wood. Ornaments and photo plaques are also offered with this service.



st July 1930 - 28
ed Husband, Fa
We will love h

united
fe it termin
had to disemb
our love will jo
together alw

Nature & Technology

As has been part of our practise for many years, **welters®** focus with determination to embrace nature, and the environment, in our products and philosophies. This is achieved through the use of UK resources and facilities and includes the use of reconstituted materials within our manufacturing processes. We endeavour to maintain our 'Made in Britain' ethos and develop product designs that are in keeping with our natural habitat.



welters® has always attempted to minimise imports, especially of non-environmentally friendly material, and particularly when exported from the opposite side of the globe and produced by nations which may pay less attention to environmental issues. **Welterstone** was created as a solution to this issue, producing products manufactured locally from indigenous quarried material. As a result of the success of **Welterstone**, **welters®** has not imported any material for several years.

We look forward to the continuation of the development of our range of products and materials and embrace the future wholeheartedly.

welters Orbs & Boulders

Made in Britain and manufactured using locally sourced, environmentally sympathetic materials. They can transform any landscape, be it woodland walkways, private gardens or curtilages, along the banks of a stream or as use as sea and flood defences. The suitable locations and uses are endless. The orbs have a cavity which can be used to inter cremated remains or to house keepsakes. Or simply used as a memorial or marker. They are faced with a tablet manufactured from a selection of materials and can be inscribed for prosperity. Adding to the range is the imminent release of the Burr Orb System – transforming manufacturing reuse with resolve to global environmental solutions.



Environmental Orbs

Environmental stone orbs with a natural covering of mosses and ferns. Examples of variable sizes and specifications. A clear mission statement showing our commitment to working with nature in all our product design and installation concepts.





Standing Stones

The Standing Stones are manufactured by hand and each one is unique in form. The Stones can be used as a landscaped feature or memorialised to generate a revenue stream for the Burial Authority. The stones pictured are to be installed in the grounds of a South Coast crematorium





welters® Environmental Orb & Rock Memorials

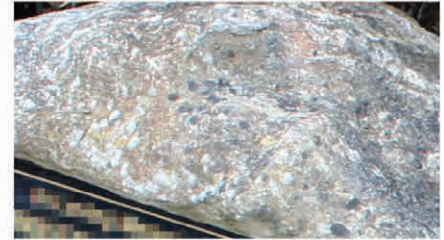
The opposite image shows a collection of Environmental Rocks & Standing Stones scattered along a path.

The rocks & standing stones can be installed in any number of locations.



welters®
ORGANISATION
WORLDWIDE
Design and Innovation

welters®
**Environmental
Stone Product**
Example Images





welters[®]
ORGANISATION
WORLDWIDE
Design and Innovation

welters[®]
**Environmental
Stone Product**
Example Images



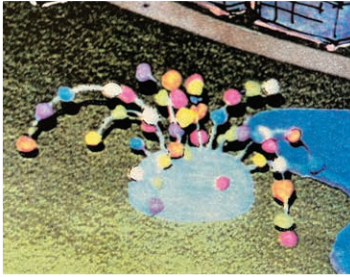
The Art of Timber Engineering

In the wake of the great storm which has hit our ancient woodlands within our land holdings, we look to the future and the true and exciting potential for the manufacture of timber products, utilising the vast resource of incredible timber that is now available to us. We will address any requirements and enquiries with artistic enthusiasm.



Nature and Technology

From what nature has felled within our arboretum, welters have created a number of Woodland inspired products. No two products are the same and can be utilised for a number of different purposes. The examples shown have been hewn into Memorial 'Orbs' from hardwood, with each orb housing up to 2 sets of cremated remains. A peaceful tribute to our loved ones



Inspired by
this early
original
Tree of Life
design by
Welters in
1992



welters®
ORGANISATION
WORLDWIDE
Concept Originators

www.welters-worldwide.com
admin@welters-worldwide.com

**Intellectual Design, Production
& Support Services**



Environmental rock products - manufactured with ice cap and volcanic rock elements
Suitable for an endless number of applications including parks, gardens, cemeteries, crematoria,
woodland areas, sea defences, stage sets, etc

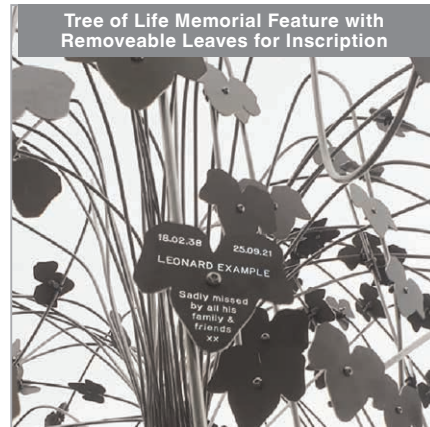
**Multi-interment Front Charging Above
Ground Mausolea Options**



**Cemetery Villages Incorporating All Full Body
& Ashes Interment Options**



**'Safe' Memorial Systems Situated Atop
Multiple Interment Burial Chambers**



**Tree of Life Memorial Feature with
Removeable Leaves for Inscription**

*"Go where you are appreciated - not
where you are tolerated"*
Visit us at www.welters-worldwide.com

Company News

As has been our philosophy for many years, welters continue to manufacture our own bespoke products from UK sourced materials, creating attractive, sustainable, opportunities for the bereavement industry.

Our range of stone embellished inscription products can be produced in any size, to fit any of our memorials, eliminating the costly and environmentally contentious granite importation.

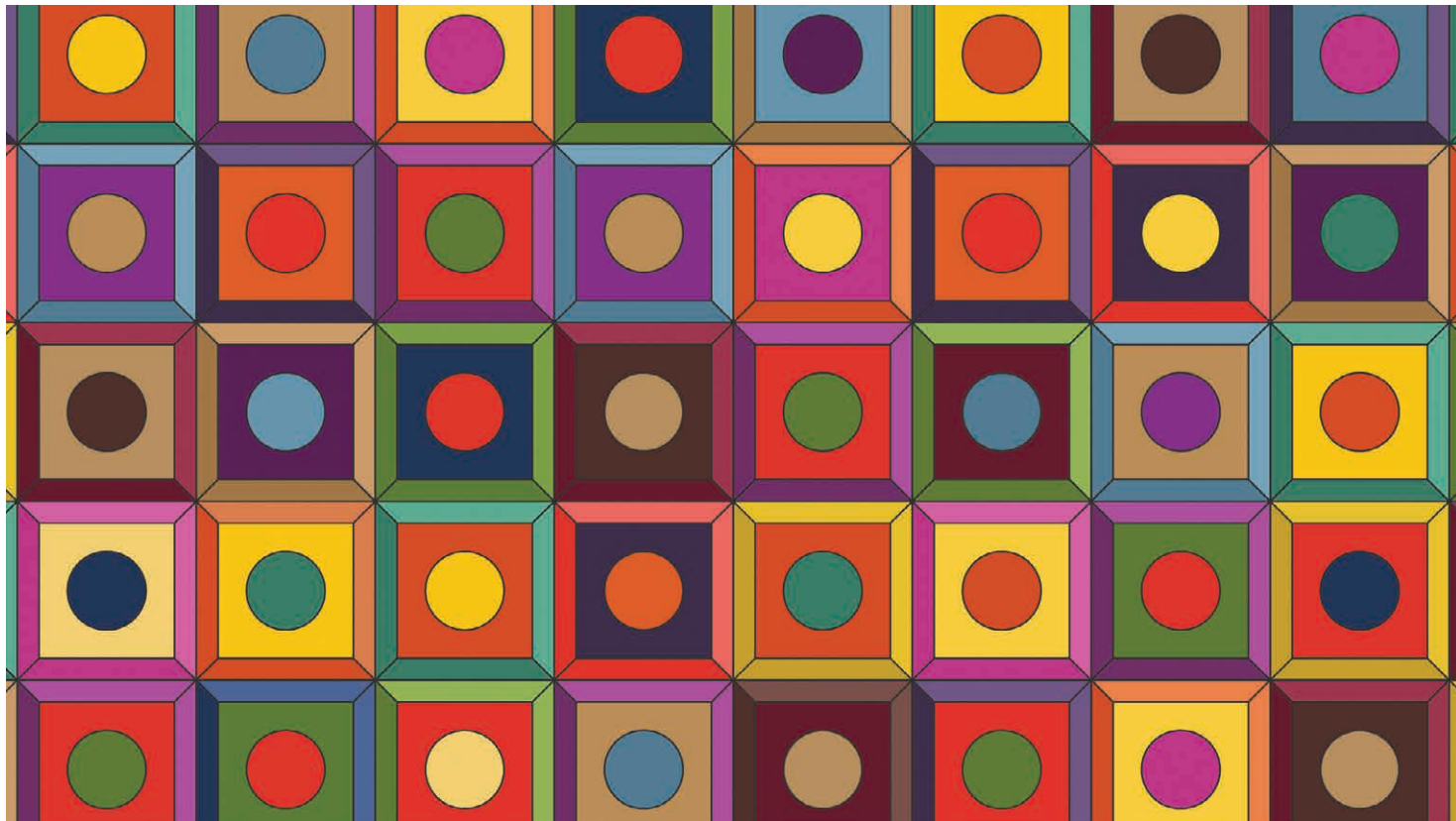
Additionally, our environmental rock products (pictured below to the left) range in size from a small boulder to a full-size standing stone and can be supplied and fitted individually or in larger quantities, collected together to form eye catching landscapes in any location. The rock products can be fitted with tablets for inscription purposes or left 'bare', reflecting nature's intention. Perfect for installation within crematoria or cemetery grounds.

Our stone orbs (pictured below to the right) are available as 4, 2, 1 or 0 interment options for cremated remains. They can be placed within rockeries, woodland areas, along pathways or in any number of other locations to create attractive and purposeful memorial areas.

Please visit our website (www.welters-worldwide.com) or email us directly (admin@welters-worldwide.com) for further information on our products and services and to find out more about our Made in Britain philosophy.







welters®
ORGANISATION
WORLDWIDE
Design and Innovation

Graphic ART™

ATTENUATION

Water collection, storage & distribution

Compliance blended with environmental understanding



www.welters-worldwide.com

welters[®]
ORGANISATION
WORLDWIDE

FLOOD PROTECTION

Attenuation, Defences, Collection & Distribution



Water control & management
with environmental understanding

www.welters-worldwide.com

© welters® organisation worldwide 2022. All rights reserved



Agriculture and the Environment

Heritage Galloway Herd

As part of their land management biodiversity and specie protection and enhancement programmes, **welters®** own two herds of Galloway cattle registered at Whithaugh; the traditional black breed and the less common white variety.

The Galloway is one of the oldest and purest of our native cattle breeds and they are famed for their hardiness and ability to live off the poorest of land and popularity is growing due to the increased interest in British Native breeds and environmental issues.

welters® are long standing members of the Galloway Cattle Society of Great Britain and Ireland.





White Galloway Heritage Herd

The Galloway Breed

Black Galloways are the most commonly farmed of the species, followed by the Belted variety with its distinctive white stripe.

The White Galloways are less common compared to the black and the belted types, which has resulted in a reduced number of quality bloodlines in this category generally. The whites are however slowly gaining in popularity and this is being encouraged by the dedicated efforts of breeders such as **welters®**, whose farms are based near the Scottish Borders.

Over the past several years, the White Heritage Galloway

has been established as a herd through **welters®** Galloway cattle breeding programme. This has been developed as part of their commitment to protecting native species and resources in the UK

and the White Galloway has an ancestry that stretches back to the white wild cattle of ancient Britain.

In general, the Galloway as a breed is naturally hornless, and instead of horns has a boney knob

at the top of its skull called a poll. They have a shaggy coat creating a double layer of coarse outer guard hairs and a thick, woolly undercoat for warmth, making them well adapted to the Border



Prize Bull - Heritage Desider

climate.

White Galloway's are typically mostly white, with black points restricted to ears, feet, and muzzle and it is these traits that contribute to a fine breeding line.

The success of **welters**® breeding programme has resulted in some fine specimens and interest in them as breeding stock is gaining momentum. One of **welters**® own bred bulls, 'Heritage Desider' won first



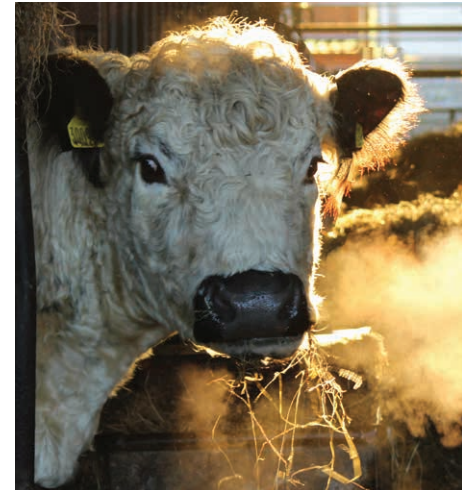
prize for **Male White Champion** at the Belted and White Galloways Show and Sale held at Castle Douglas in October 2017. This was followed by **Reserve Overall Winner** as recognition of the breed quality of the

skilled animal husbandry practised at the **welters**® farm.

Heritage Desider will be used to sire more offspring within the herd, which will help maintain the quality of the bloodline throughout the breeding stock and also further afield, as the sperm of an award winning bull can not only be sold to breeders from the UK but potentially across the world.

Indeed the bloodline base of the current **welters**® herd is produced in part from a very famous herd called the Kilnstown Galloways and their genetic heritage has been bred into the whites to enhance the overall value and quality of the stock going forward.

Shortly after the victory at Castle Douglas, Heritage Desider was selected to represent England for an international competition organised by global breeding organisation GallowayBreeder.net and narrowly lost out to Australia.



The herd is currently wintering at the main farm site where they are being monitored and cared for by dedicated staff to ensure continued maintenance of a healthy herd. Come the spring, the cattle will be moved to a neighbouring secondary farmland site where they can range freely in open rolling fields and graze on the grass, heathers and thistles common to the Borders of England and Scotland.



Free Range really does mean Free Range

welters® Award Winning Galloway breeds are raised in the fields of the Scottish Borders.

With the emphasis on animal welfare, the company ensures that their animals enjoy a stress-free life, this means that the cattle can roam across 100's of acres of sustainable farmland, feeding under a natural grazing system.

Natural grazing also plays a key role in maintaining species-rich habitats of the grasslands, heathlands and wood pastures that are present within the farm. This is an important aspect for **welters®** and their commitment to biodiversity and specie protection.



welters[®]
ORGANISATION
WORLDWIDE
Design and Innovation

A
GREAT^{TM ©}
BRITISH
SUCCESS STORY





welters[®]

ORGANISATION
WORLDWIDE
Design and Innovation

PO Box 159, Carlisle, Great Britain, CA2 5BG
 Website: www.welters-worldwide.com
 Email: admin@welters-worldwide.com

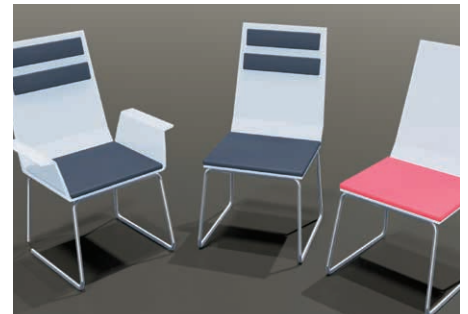
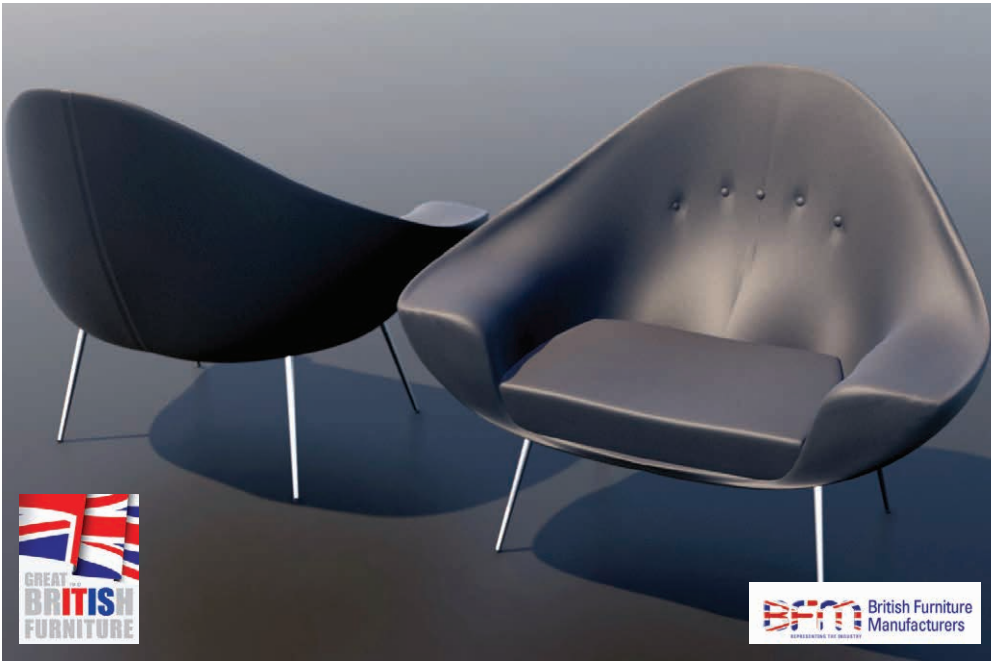
Occasional Stool and Table

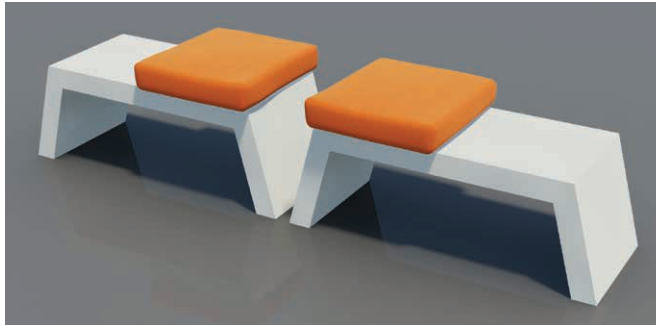


Occasional stool with fabric covered soft cushion seating and decorative stone legs. A matching table with polished granite top is available to complete the set.



Furniture Design

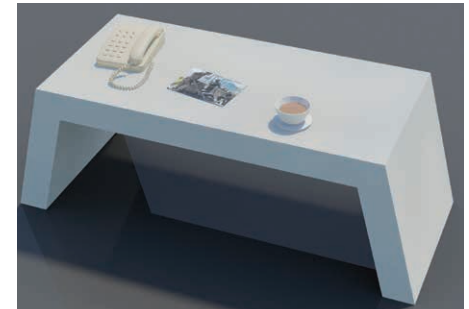




Furniture Design

The latest production of design sets combine modern styling with multiple material options for manufacture.

Stone features predominately and forms a central part of the ethos to produce a range of designs for indoor and outdoor use across the public, domestic and private market demographic.





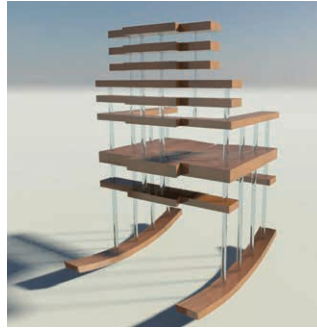
Furniture Design

Throughout generations, **welters®** skills and craftsmanship have been continually reflected in the design and manufacture of fine furniture.

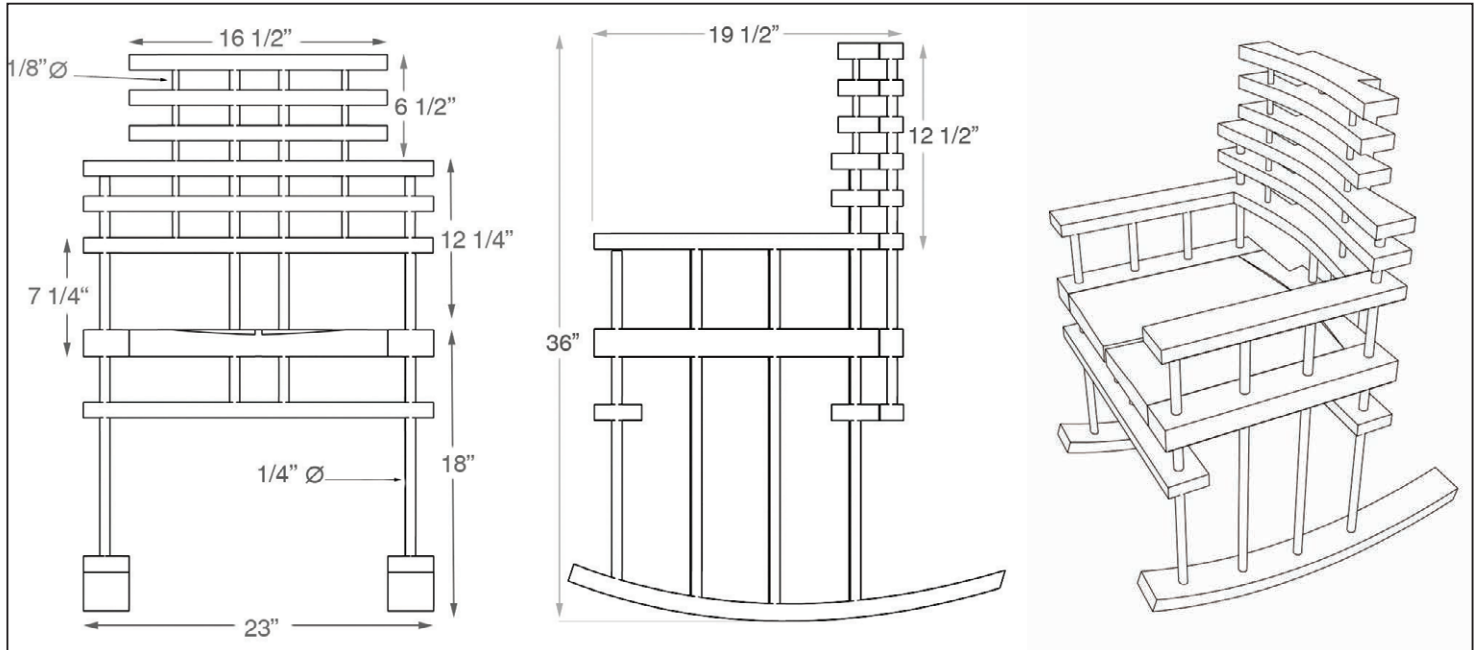
Keith Welters is a member of the Worshipful Company of Furniture Makers.

WOW are members of the British Furniture Manufacturers Association (BFM)





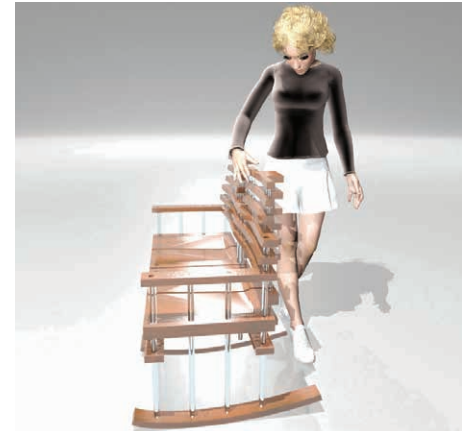
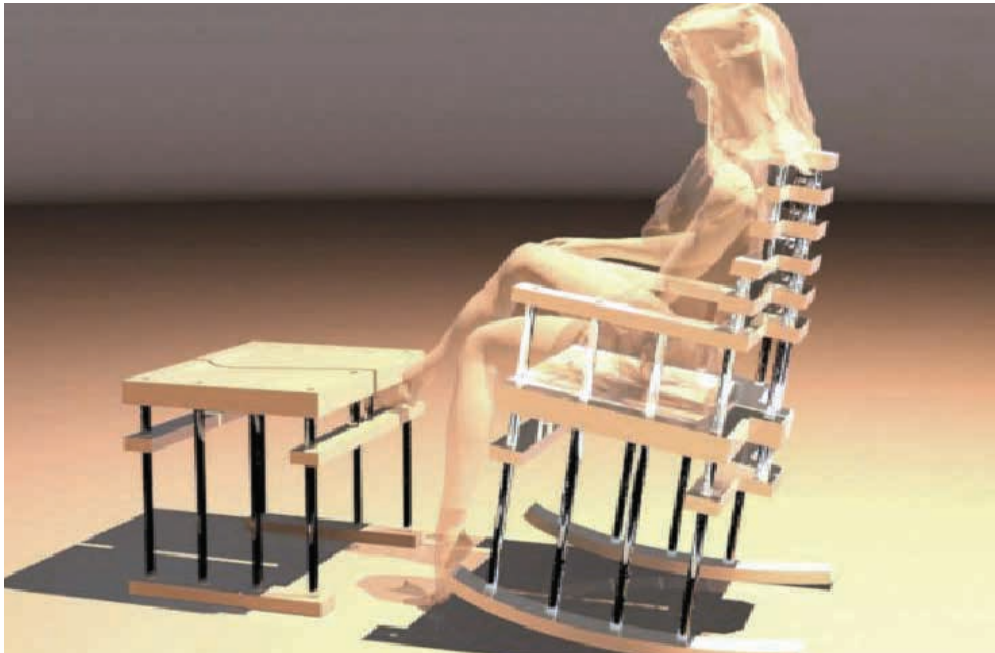
welters windsor chair





welters windsor Chair Range

The company is celebrating its return to the 'of the moment' Windsor Chair production through the innovative interpretation of manufacturing styles and materials in a comprehensive and all embracing range of furniture elements.



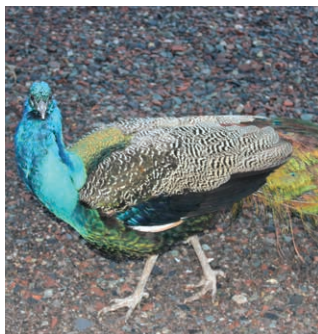


welters[®]

ORGANISATION
WORLDWIDE
Design and Innovation

Nature and Technology

Nestled within the Scottish Borders sits **welters[®]** Whithaugh House. The house itself is steeped in history and is surrounded by a landscape rich in biodiversity. It is this setting that forms the inspiration for the company's ethos of Nature and Technology which drives the creative and innovative development so prolific within the organisation today.





Whithaugh Heritage

Whithaugh Tower House and surrounding grounds have existed for nearly 500 years, providing a rich historical and natural heritage. Although modified over the years, the present house still occupies the same position, situated in a picturesque valley surrounded by grand views of undisturbed Scottish hillside. The company continues this legacy with land management programmes in place to ensure ongoing protection of this valued national asset.







welters
 ORGANISATION
 WORLDWIDE
 Design and Innovation

Nature and Technology

The environmental orbs in this image have, over time, become one with nature. The moss and ferns have grown over the top of the orbs, almost camouflaging them at the base of a tree where mushrooms already grow in abundance.



welters[®]
ORGANISATION
WORLDWIDE
Design and Innovation

Graphic ART[™]

