

# welters world™

*Autumn 2021*



# welters® Stainless Steel Tree of Life

The Tree of Life was first created by welters in 1998. Many variations, including stand alone and water feature options, are now installed.

**welters®**  
ORGANISATION  
WORLDWIDE  
Design and Innovation



welters® are acclaimed manufacturers of  
the finest quality, low price, pre-emptive  
interment & memorial design systems

[www.welters-worldwide.com](http://www.welters-worldwide.com)

welters®  
ORGANISATION  
WORLDWIDE  
Design and Innovation



The largest  
variety of  
interment  
solutions - in  
stock



Post Brexit and  
pandemic conditions  
indicate clearly that  
material prices are  
rising. Inquire now  
before further price  
increases apply.





# welters® Art Deco Product Range

welters® Art Deco product range was first launched in 2013. The most forward thinking design ethos with leading technology.

**welters®**  
ORGANISATION  
WORLDWIDE  
Design and Innovation





# Company news

Emerging from the 'cloud', we all now attempt to harness the implications and guidelines that are placed before us. We thank our customers who have supported us through testing times and appreciate the thanks we have and are receiving for our dedication.

## Partnership Programme



**welters®**  
ORGANISATION  
WORLDWIDE  
Design and Innovation

We continue to produce bespoke memorial and interment systems and emphasise our existing 30 plus years' service of active support, from manufactured single units to multiple large-scale provision.

The pandemic has emphasised the importance of the welters® Partnership Programme which ensures that our proven track record is readily available for Cemetery Authorities, in any location, which require funding support and additional professional input.

Please continue to view our website ([www.welters-worldwide.com](http://www.welters-worldwide.com)) for further information on our products and services and request the specific philosophy and conceptual structure in relation to our Partnership Programme opportunities.

# Standing the Test of Time

welters® Bronze Cast Heritage List Cemetery Art. These images show the longevity of the material from production in 2001 until now. Withstanding 20 years of British weather!

**welters®**

ORGANISATION  
WORLDWIDE  
Design and Innovation





# Standing the Test of Time

welters® Bronze Cast Heritage List Cemetery Art. These images show the longevity of the material from production in 2001 until now. Withstanding 20 years of British weather!

**welters®**  
ORGANISATION  
WORLDWIDE  
Design and Innovation







Partnership  
Programme

**welters**<sup>®</sup>  
ORGANISATION  
WORLDWIDE

**The Concept Originators & Leaders in the industry**

Visit [www.welters-worldwide.com](http://www.welters-worldwide.com) for more information



Above Ground Interment



Cremated Remains Interment



Cemetery Village<sup>®</sup>



Below Ground Interment



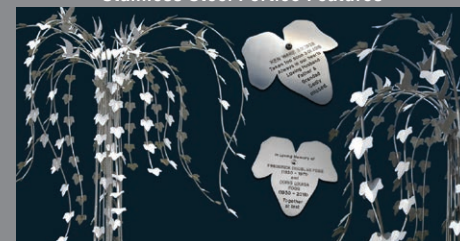
Memorialisation



Standing Stones



Stone Memorial Orbs



Communal Memorialisation



Stainless Steel Tree of Life Features



# Championship Blood

welters® new-born heifer calf, sired by Heritage White Prince with dam Heritage Cappuccino. Rejoice in the quality of perfection - await further follow up detail. Lady, our working collie, looks on in admiration.

**welters®**  
ORGANISATION  
WORLDWIDE  
Design and Innovation



# Muslim Interment Solutions

Another three loads of chambers dispatched and destined for the Muslim Community to aid with their burial requirements. welters® supply single interment burial chambers and rings (a chamber with no bottom) which are suitable for Muslim interment. Please contact us for further information.

**welters®**  
ORGANISATION  
WORLDWIDE  
Design and Innovation





# welters® Multi-Material Mausolea

With their majestic stainless-steel spires, apex roof arrangements, stone columns & facias and granite panels for inscription, welters® Family Multi-material Mausolea provide a unique and attractive interment solution. They are available in 2, 4 or 6 interment configurations.

**welters®**  
ORGANISATION  
WORLDWIDE  
Design and Innovation





**welters**<sup>®</sup>  
ORGANISATION  
WORLDWIDE  
Design and Innovation

**welters** *ART*<sup>™</sup>

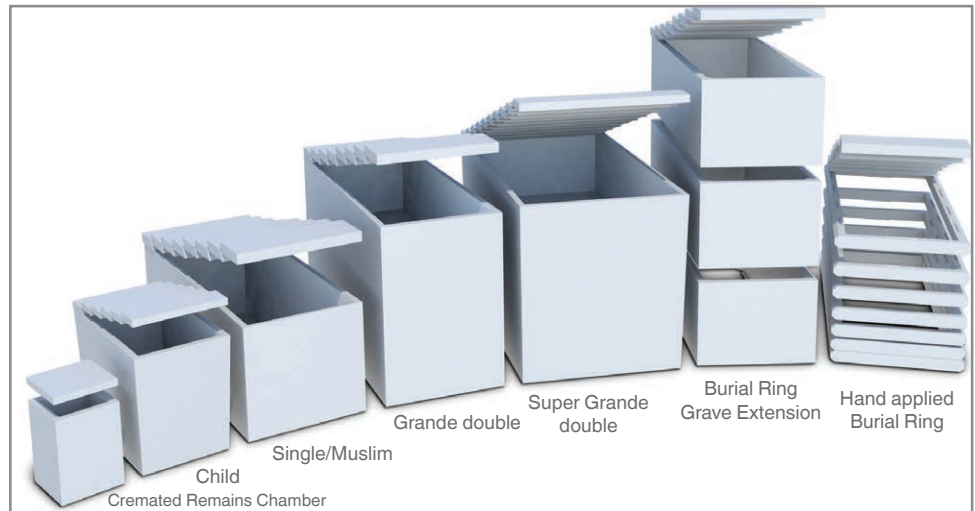


**welters®**  
ORGANISATION  
WORLDWIDE  
Design and Innovation



## Full Body Burial

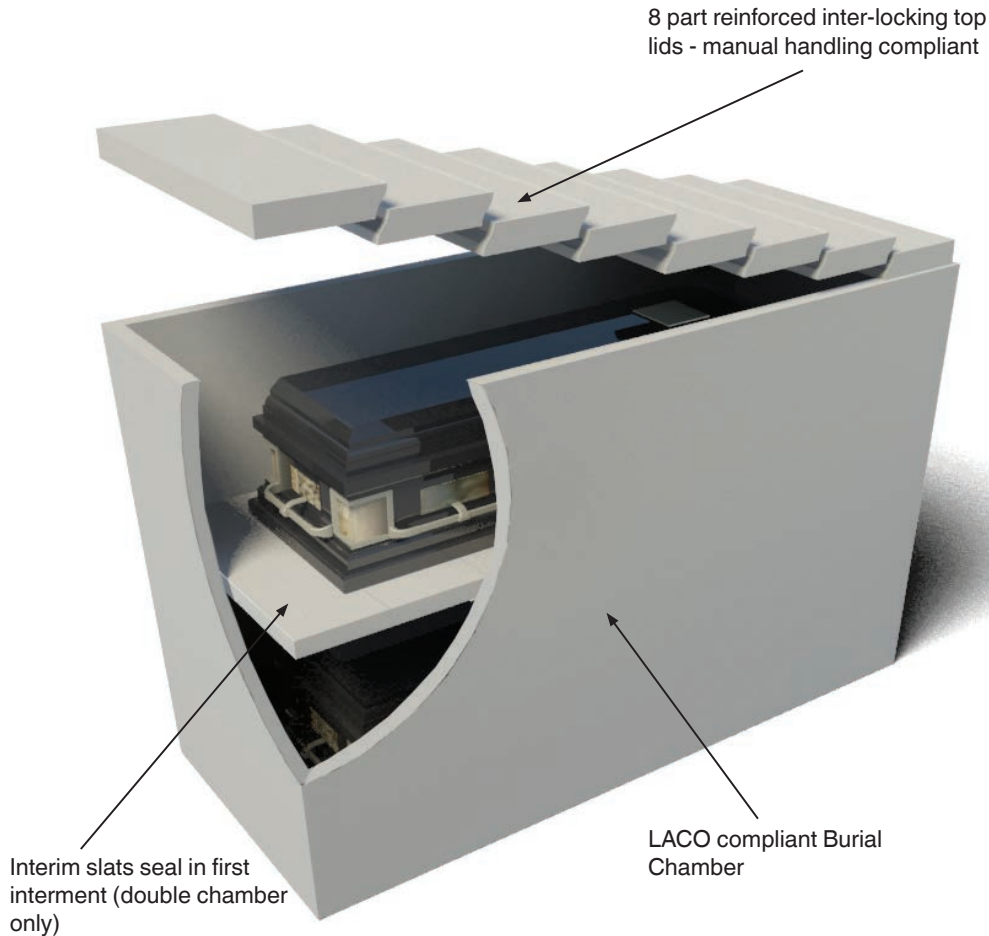
- welters® have a wide range of burial chamber sizes available
- From the cremated remains size chamber to the super grande double chamber which is extra large for extra large caskets
- Extension rings can be utilised to produce multiple interment depths

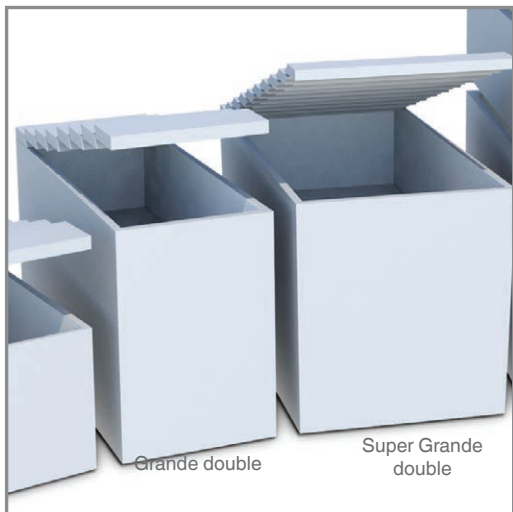




## Grande Double Burial Chamber

- Reinforced concrete burial chamber for full body interment
- Double depth grande chamber offers two interment opportunities
- Can be extended above ground to provide additional space if required

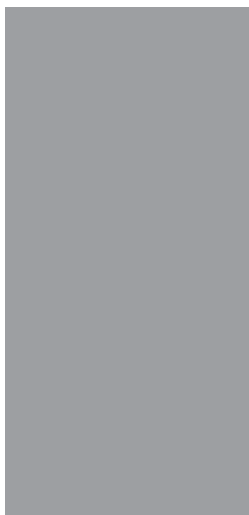




**welters®**  
 ORGANISATION  
 WORLDWIDE  
 Design and Innovation

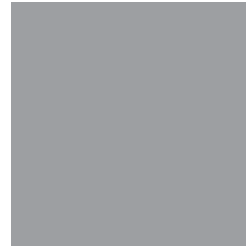
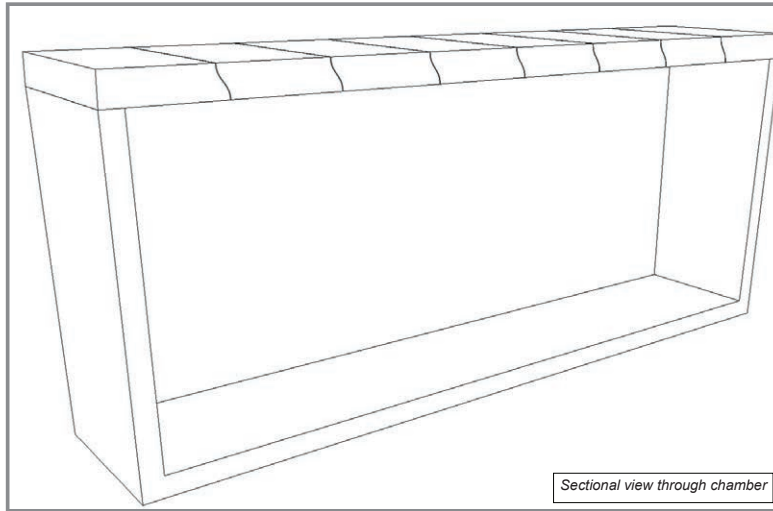
## Super Grande Double Burial Chamber

- Reinforced concrete burial chamber for full body interment
- Extra large Double depth grande chamber offers two extra large interment opportunities for over size caskets

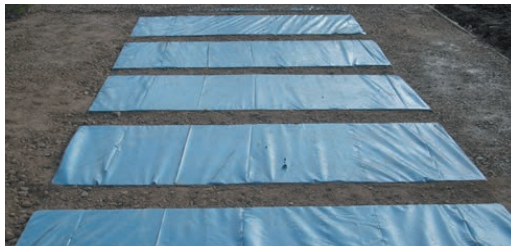




**welters®**  
ORGANISATION  
WORLDWIDE  
Design and Innovation



## Single/Muslim Burial Chamber



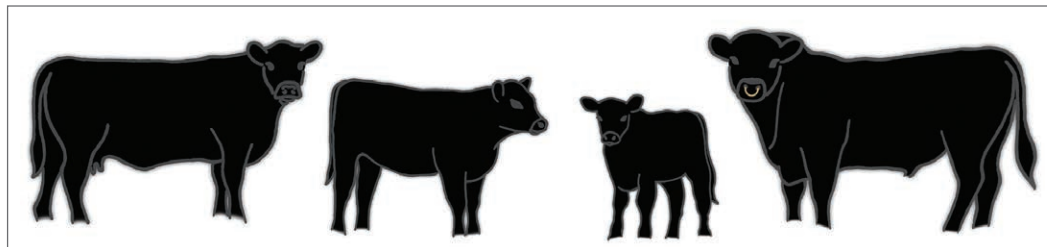
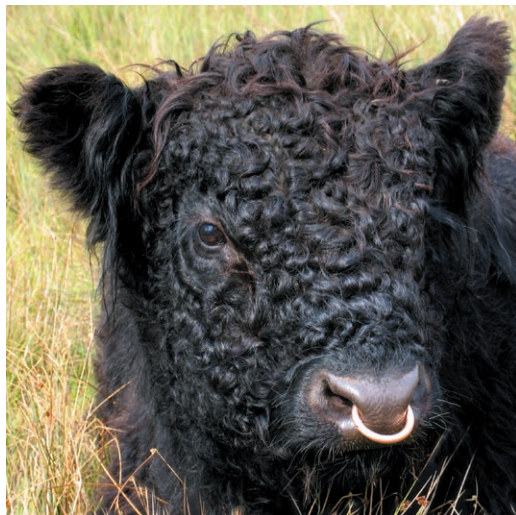
- Reinforced concrete burial chamber for full body interment
- Single chamber offers one interment opportunity
- Can be extended above ground to provide additional space if required



# welters® Black Galloway Heritage Herd

Registered with the Black Galloway Cattle Society

The establishment of the **welters®** 'Heritage' Pedigree Herd of Galloway cattle is and will continue to be one of the enduring and most rewarding aspects of the Land Based enterprises. The Genetic design of the Native Scottish outlying breed with countless benefits was in danger of diminishment.



# welters®

ORGANISATION  
WORLDWIDE

Design and Innovation

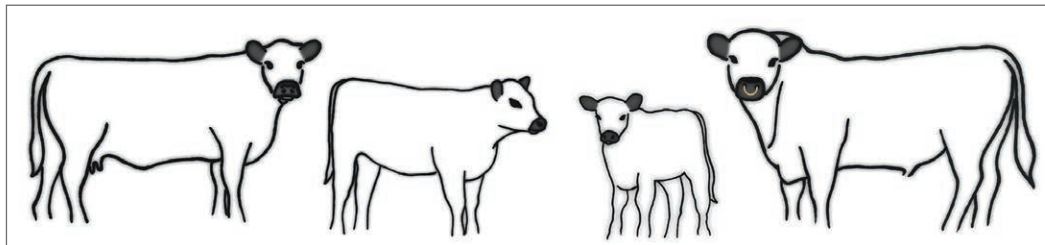
The 'Heritage' Herd has Gene design from the finest Global Pedigrees to protect and perpetuate the finest Scottish Native breed which thrives on the hill land, heathland herbs and water meadows of our diverse landscapes.

The Galloway is one of the oldest and purest of our native cattle breeds. They are famed for their hardiness and can live off the poorest of land. The Galloway female is the ideal suckler cow and will produce an excellent beefy calf which is in great demand by people requiring the highest quality, natural grown beef. Galloway Cattle have a great deal to offer and will fit into any agricultural system, either a traditional hill farm or low land management plan. Galloway popularity is growing due to the increased interest in British Native breeds and environmental issues.

# welters® White Galloway Heritage Herd

## Registered with the Belted Galloway Cattle Society

The White Galloway Heritage herd is a fairly recent addition to welters® agricultural programmes. As part of their commitment to protecting native species and resources in the UK the White Galloway has a heritage that stretches back to the white wild cattle of ancient Britain.



# welters®

ORGANISATION  
WORLDWIDE  
Design and Innovation

The colour pattern of the White Galloway is mostly white, with its colour restricted to its ears, feet, and around its eyes. They will also often have colour on their poll, tail, and udder. The White Galloway breed originates from the Wild White cattle of ancient Britain.

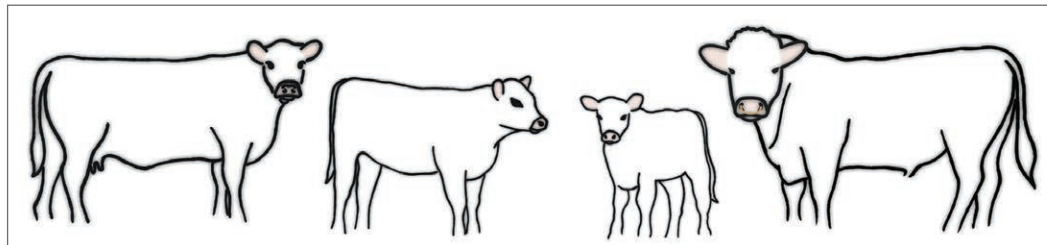
The Galloway is naturally hornless, and instead of horns has a bone knob at the top of its skull that is called a poll. This breed's shaggy coat has both a thick, woolly undercoat for warmth and stiffer guard hairs that help shed water, making them well adapted to harsher climates.

**welters®** Galloway herds of Whithaugh forms part of their mission and drive for research and development in the protection of native species and natural resources.

# welters® Whitebred Shorthorn Heritage Herd

## Registered with the Whitebred Shorthorn Association

Whitebred Shorthorn cattle are on the Rare Breeds Survival Trust (RBST) watch list and **welters®** have been working with the RBST to source pedigree heifers as part of their Selective Breeding Programme



# welters®

## ORGANISATION WORLDWIDE

### Design and Innovation

Whitebred Shorthorn can be found mainly in the borders of Scotland and England. Bulls are bred primarily as a crossing bull and traditionally crossed with Galloway heifers to produce the Blue Grey, which is recognised as a pedigree in itself.

The Whitebred Shorthorn bull is being used to cross with selected Black Galloways to establish a Blue Grey herd. The new heifers will also be used to produce new bulls that will further enhance the genetic stock to ensure a hardy and healthy herd well suited to the Border conditions.

The Blue Grey cattle produced by the cross breeding is a 1st generation hybrid and although recognised as a breed, are not usually able to sustain the blue grey colour into 2nd generation. In order for the breed to be preserved, the Whitebred Shorthorn and the Black Galloway must be maintained separately.



- The 720mm extension ring affords the opportunity to offer full body interment with earthen base
- These units can also be utilised to extend the height and number of interments of welters® single and grande double chambers



**welters®**  
ORGANISATION  
WORLDWIDE  
Design and Innovation



**720mm  
Extension Ring**



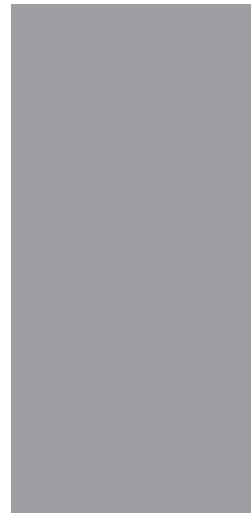


**welters®**  
ORGANISATION  
WORLDWIDE  
Design and Innovation

- The 100mm extension ring affords the opportunity to offer full body interment with earthen base
- Can also be utilised to extend the height and number of interments of welters® single and grande double chambers
- These units can be installed by hand where access to the grave is not possible with machinery
- Any number of units can be used to reach required height/depth



## 100mm Extension Ring



- Black granite tablet for inscription
- Grande extension available as optional extra



**welters®**  
ORGANISATION  
WORLDWIDE  
Design and Innovation

**welters® 900  
Memorial**





- welters® produce a wide range of memorial options
- Images show the 900 memorial, Royale memorial, Book memorial, Heritage Cross memorial and the 900 memorial with grande extension and Royale style pediment



welters®  
ORGANISATION  
WORLDWIDE  
Design and Innovation

## Memorial Options





**welters®**  
ORGANISATION  
WORLDWIDE  
Design and Innovation

## Memorial Options

- welters® produce a wide range of memorial options
- Images show the 900 memorial, Royale memorial, Book memorial, Heritage Cross memorial and the 900 memorial with grande extension and Royale style pediment







**welters®**  
ORGANISATION  
WORLDWIDE  
Design and Innovation

## Heritage Cross Memorial



- This beautifully detailed heritage cross memorial is both poignant and impressive
- The memorial has provision for a fitted desktop memorial to allow for inscription space
- Can be fitted to welters® burial chambers





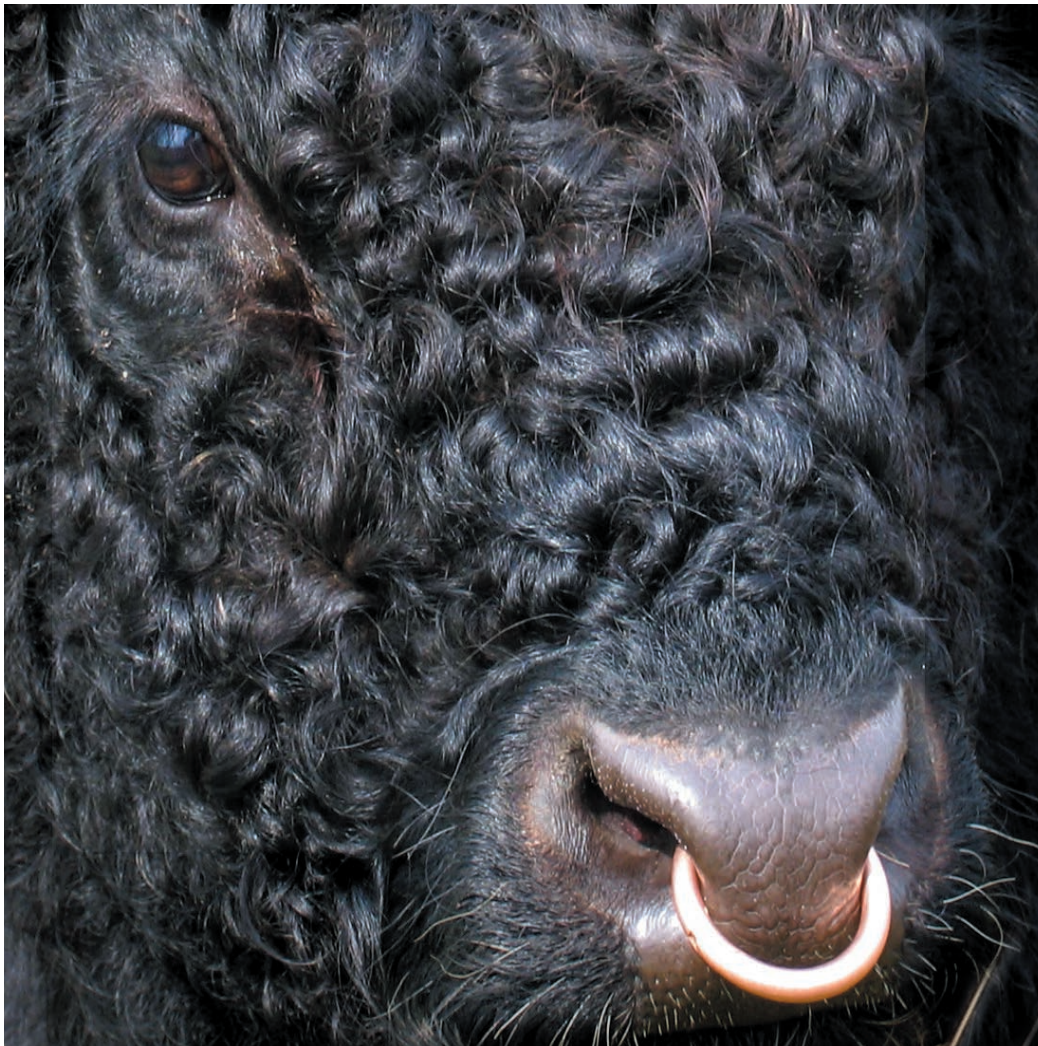
- A choice of additional products can be selected to complement the standard memorial configuration

- These can be supplied in a number of different materials

**welters<sup>®</sup>**  
ORGANISATION  
WORLDWIDE  
Design and Innovation

## Adornments





**welters®**  
ORGANISATION  
WORLDWIDE  
Design and Innovation

**welters®** Galloway  
Heritage Herd  
The Finest Pedigree

**welters®** Design  
and Innovation

[www.welters-worldwide.com](http://www.welters-worldwide.com)  
[admin@welers-worldwide.com](mailto:admin@welers-worldwide.com)



