

# welters® News Updates

**welters®**  
ORGANISATION  
WORLDWIDE  
Design and Innovation



# Environmental Orbs

Following the recent substantial heavy rainfall, welters® environmental orbs are in heavy demand for flood defence as well as for environmental use such as embankment retention, landscaping and agriculture.

**welters®**  
ORGANISATION  
WORLDWIDE  
Design and Innovation





*Below ground interment rings*



*Interment rings  
of varying height*

**welters®**  
ORGANISATION  
WORLDWIDE  
Design and Innovation

## Burial Chambers & Interment Rings

welters® unique and highly productive facility is producing and installing burial chambers and interment rings of varied and diverse depths and heights for all ground conditions and resource availability.

# Made in Britain

Through the ages and yes, just last week, welters® are producing memorial systems which are genuinely made in Britain.

**welters®**  
ORGANISATION  
WORLDWIDE  
Design and Innovation



# Made in Britain

Made in Britain and inspired by British classic design. This recent project installation shows a variety of exquisite memorialisation and interment amidst the uncertainty of present day life.

**welters**<sup>®</sup>  
ORGANISATION  
WORLDWIDE  
Design and Innovation



# Winter Edition of Government World

Artistic development for forthcoming Winter edition of Government World shows a robin which frequently attends our personnel while staying in London.

**welters**<sup>®</sup>  
ORGANISATION  
WORLDWIDE  
Design and Innovation

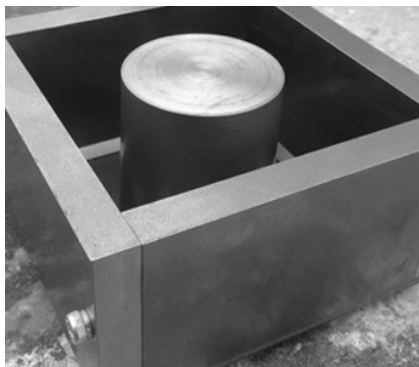


**Government** WORLD™  
*Winter 2019 Edition*

# Massive Resource

Under many additional industrial supply chain issues prevailing under very difficult circumstances, welters® are applying massive resource to resolve supply at need under key worker conditions.

**welters®**  
ORGANISATION  
WORLDWIDE  
Design and Innovation





# welters®

ORGANISATION  
WORLDWIDE

Design and Innovation

## F.D. Welters Ltd Heritage

In these difficult times, we show this beautiful image which reminds us of our F.D. Welters Ltd heritage back in the early 1920's and it's elephant trademark, which still exists today as this sculpture, with the strapline of Strength and Reliability.



**welters<sup>®</sup>**  
ORGANISATION  
WORLDWIDE  
Design and Innovation

## Easter Approaches

Cheery images from welters<sup>®</sup>  
rural agricultural locations as  
we approach this Easter time.





# welters®

ORGANISATION  
WORLDWIDE

Design and Innovation

## Stone Engineering

welters® continue apace with production of stone engineering components for architectural artistry which, in these challenging times, is in high demand with inspired users.



**welters<sup>®</sup>**  
ORGANISATION  
WORLDWIDE  
Design and Innovation

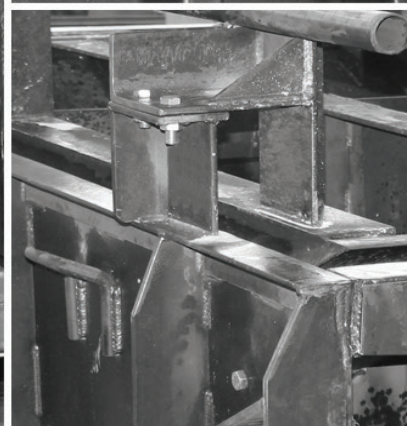
## Agriculture

Hill grazing water drainage  
and distribution works prior to  
Spring native breed livestock  
turnout.

# Manufacturing Emphasis

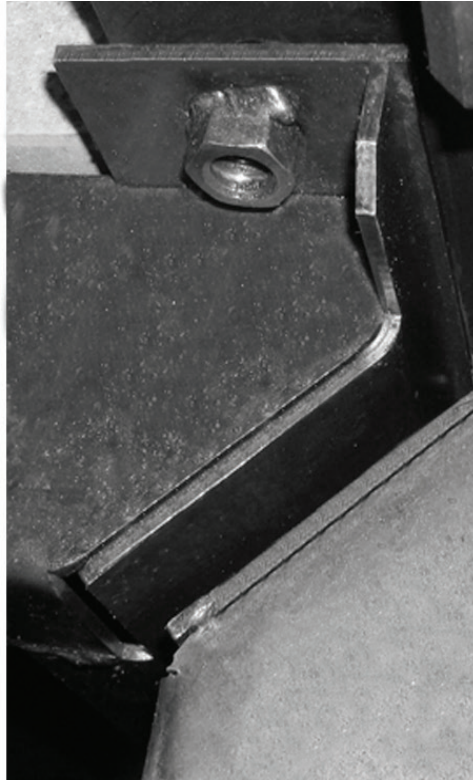
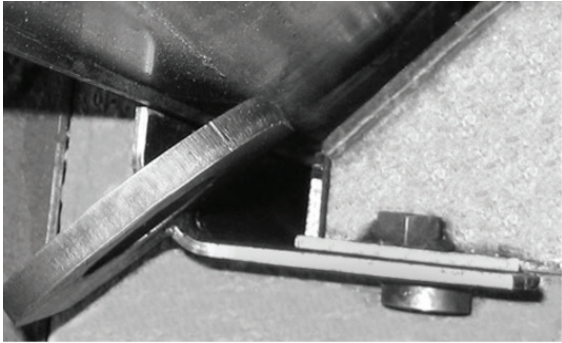
welters® are constantly increasing and updating all tooling to support the fervent supply chain demand for components throughout this challenging era.

**welters®**  
ORGANISATION  
WORLDWIDE  
Design and Innovation



# Massive Investment in Advanced Tooling for Manufacturing Response

**welters<sup>®</sup>**  
ORGANISATION  
WORLDWIDE  
Design and Innovation



Due to the continuously increasing demand in our production throughput to serve the industry in these most challenging times, welters<sup>®</sup> organisation are increasing their capabilities in production to the extent that output is enhanced through technology to enable our support to the market place to be appropriate to current need.

Output increase in response to requirement has received investment increase to facilitate real capability from all UK manufacturing expertise.

# Look Beyond the Surface

A moment of magic caught amongst the industrial chaos on one of our sites, proving that beauty can be found anywhere, if you look beyond the surface.

**welters**<sup>®</sup>  
ORGANISATION  
WORLDWIDE  
Design and Innovation



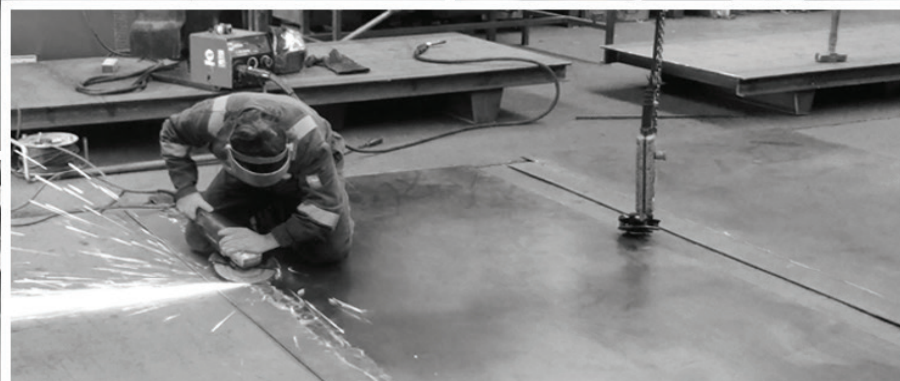
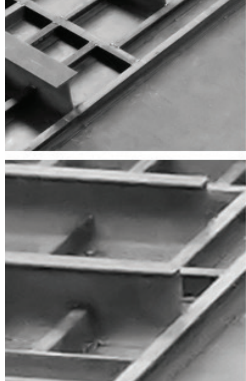
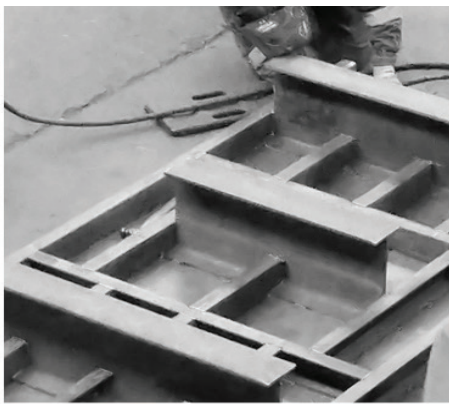
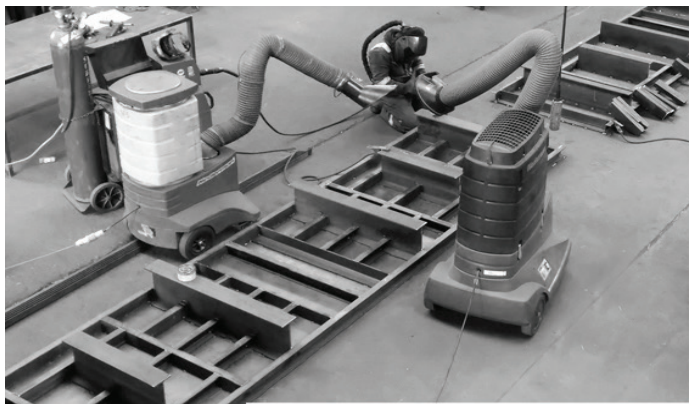
# New Tooling

welters® prototyping facility working flat out on new tooling to keep pace of new product demand instigated by our progressive design department.

# welters®

ORGANISATION  
WORLDWIDE

Design and Innovation



# Super Fine Systems

welters® under active pressure to supply the nation with its industrial requirements whilst designing super fine systems. It will be a very busy weekend!

**welters®**  
ORGANISATION  
WORLDWIDE  
Design and Innovation



## Tooling Investment

Through tooling investment in response to national and international need, whilst many chatter and philosophise, welters® act and implement.

**welters®**

ORGANISATION  
WORLDWIDE

Design and Innovation

**welters®**  
**ACTION**



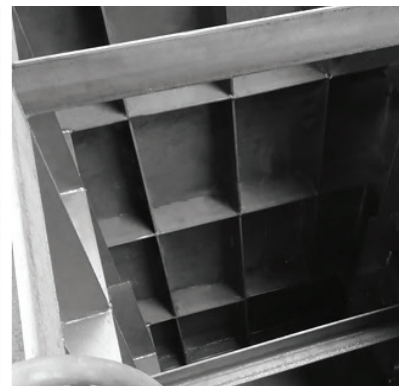
# Expanding Tooling Base

welters® reassure that whilst others assemble in academic groups to conceive solutions to hypothetical questions, we are expanding our tooling base to supply important elements to key industries urgently required in this most vital and serious need of national and world trade.

# welters®

ORGANISATION  
WORLDWIDE

Design and Innovation



## Diverse Bloodlines

welters® peace, quiet and tranquillity amidst the national industrial stress. A  
welters® home-bred white heifer and its calf, introducing vitally important  
diverse bloodlines.

**welters®**  
ORGANISATION  
WORLDWIDE  
Design and Innovation



**welters<sup>®</sup>**  
ORGANISATION  
WORLDWIDE  
**Design and Innovation**

PO Box 159, Carlisle,  
Great Britain, CA2 5BG

Procurement Enquiries: [procurement@welters-worldwide.com](mailto:procurement@welters-worldwide.com)

General Enquiries: [admin@welters-worldwide.com](mailto:admin@welters-worldwide.com)