

welters *ART*<sup>TM</sup>





## welters *ART- a Government WORLD supplement*

welters commercial activities has over several generations been synonymous with art and creativity. Through product and architectural design, the company has always excelled in their draftmanship, artistry and flare for original concepts and thought.

This document puts together a collection of graphical design patterns exploring colour and repetition using simple lines and form inspired by the natural environment.



Whilst every effort has been made to ensure the accuracy of all articles, advertisements and other insertions in this publication, the publisher can accept no responsibility for any errors or omissions or incorrect insertions. The views of the contributors are not necessarily those of the publisher or the advertisers. The publisher makes no warranties, claims or guarantees in regard to accuracy, completeness or currency of information and cannot accept any liability resulting from the use or misuse of any such information. The Publisher does not accept responsibility for mistakes, be they editorial or typographical, nor for consequences resulting from them.

# welters<sup>®</sup>

## ORGANISATION WORLDWIDE

Visit us on-line at  
[government-world.com](http://government-world.com)

Advertising | Articles | News |  
Letters | Editorials

### welters organisation

P.O. Box 159 Carlisle, Great Britain CA2  
5BG

Office: 08702 416 422

Fax: 01228 674 959

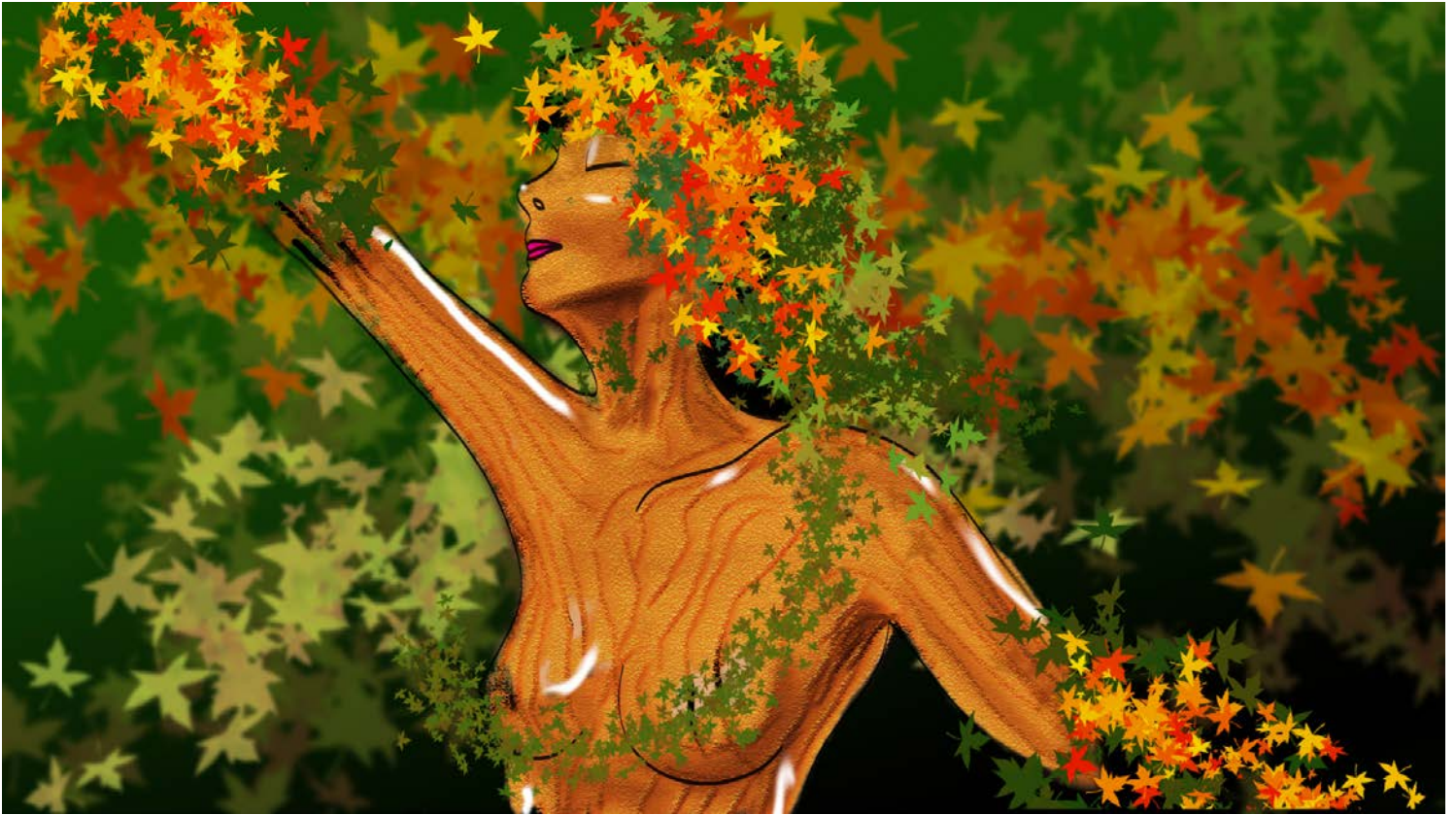
E-mail: [office@government-world.com](mailto:office@government-world.com)

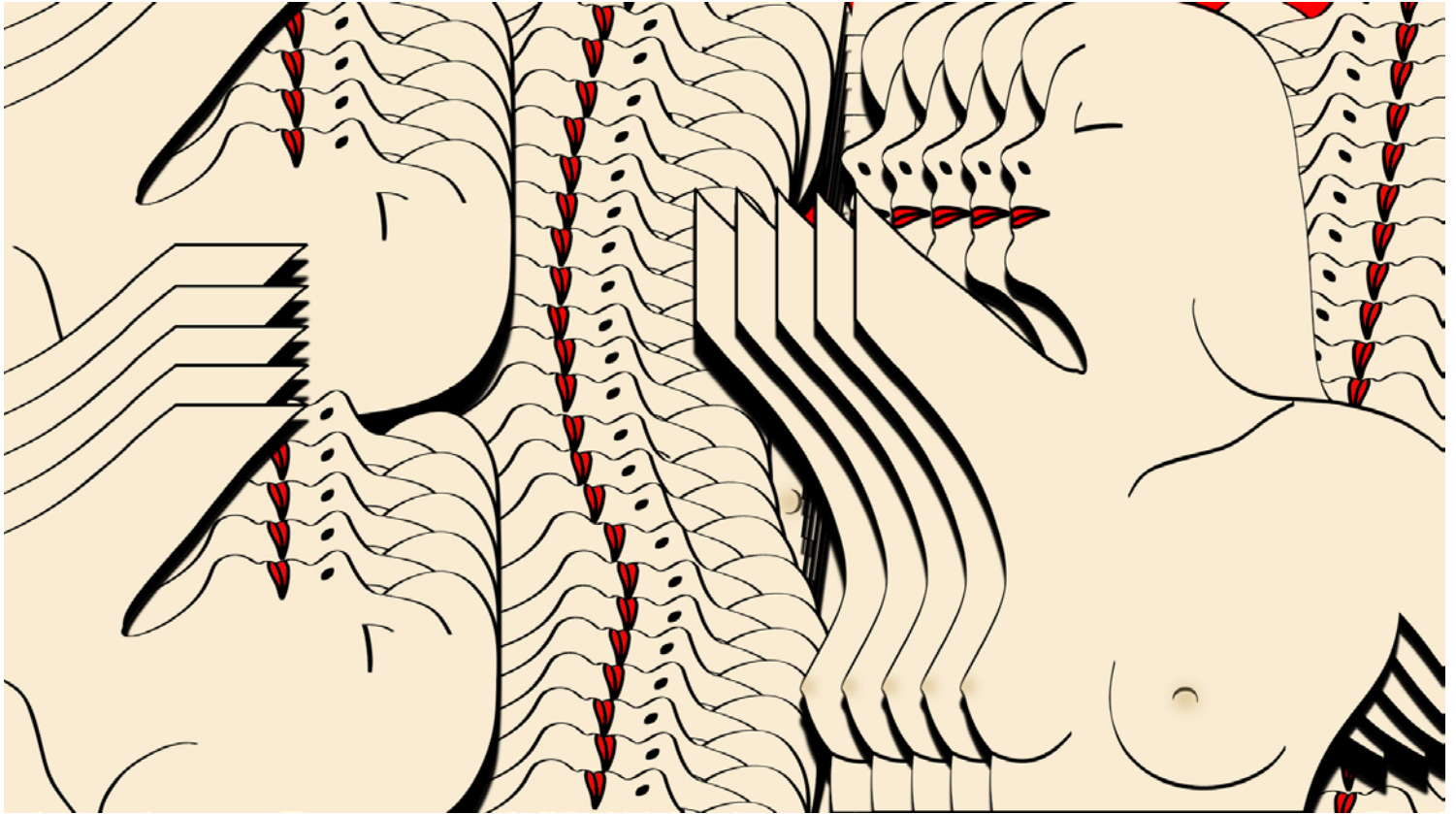
Submissions should be sent to **Government WORLD**,  
PO Box 159, Carlisle, CA2 5BG  
Tel: 08702 416 422 Fax: 01228 674 959  
Email: [submissions@government-world.com](mailto:submissions@government-world.com)

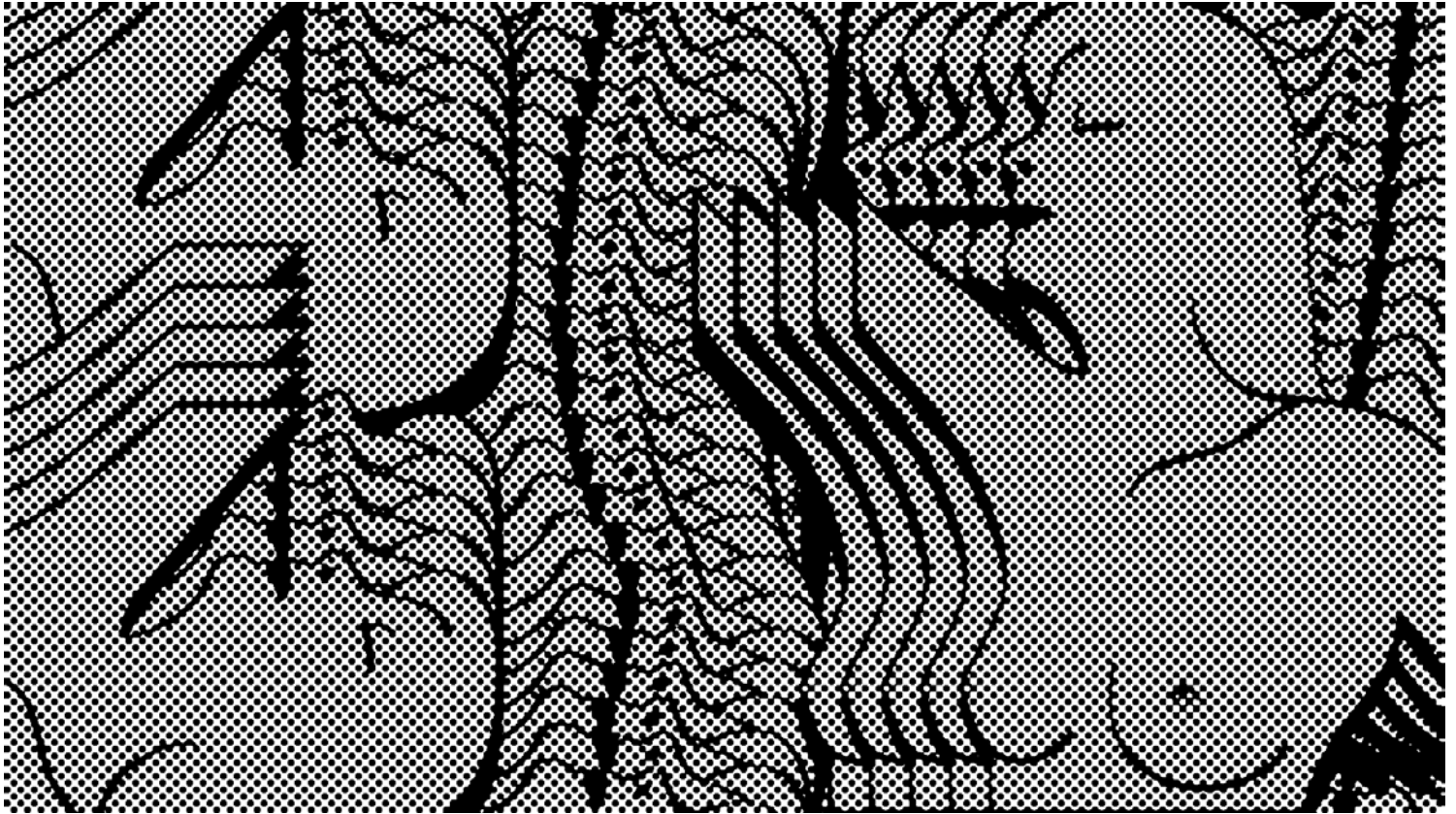
ISSN 1744-6996

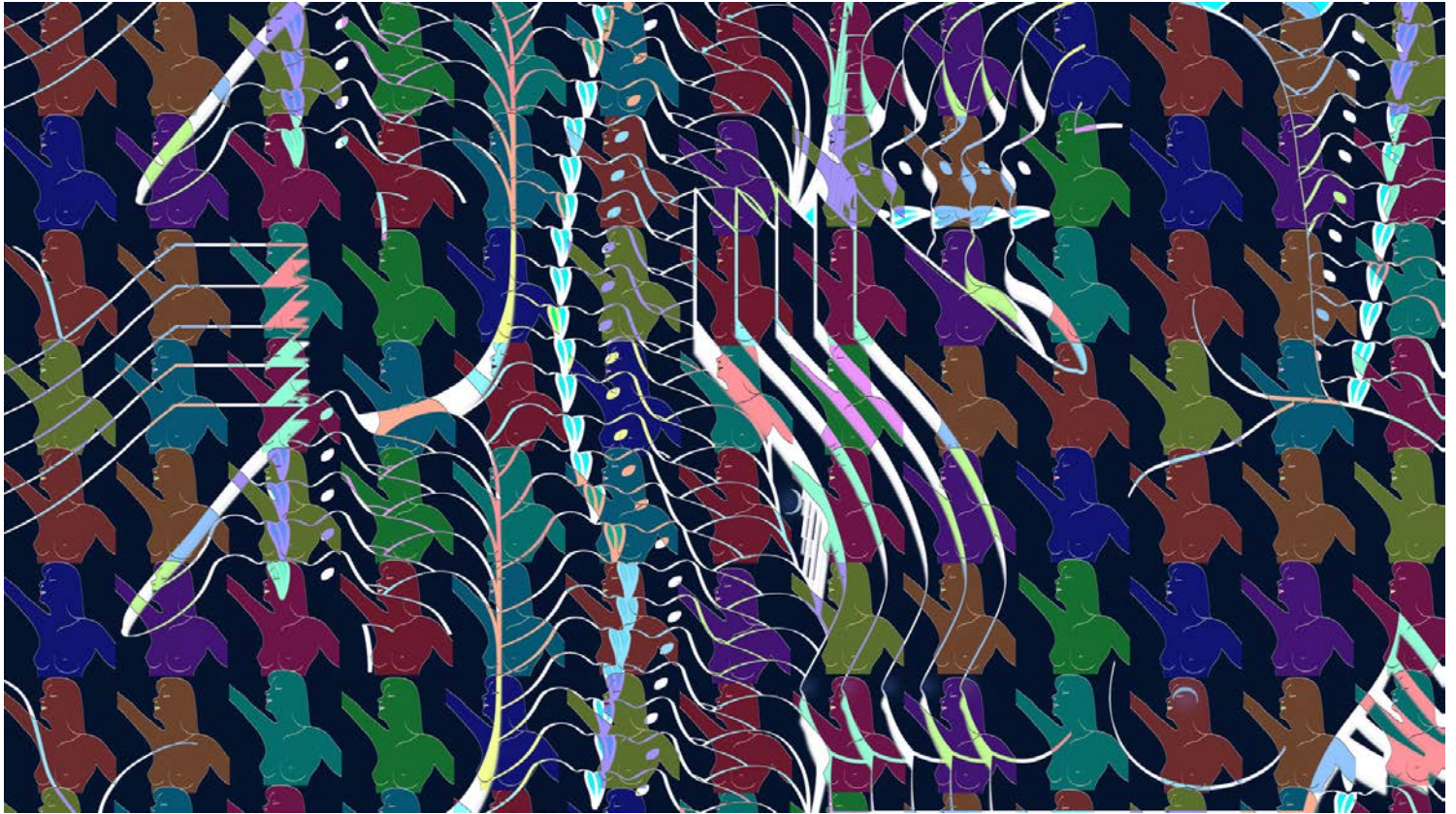


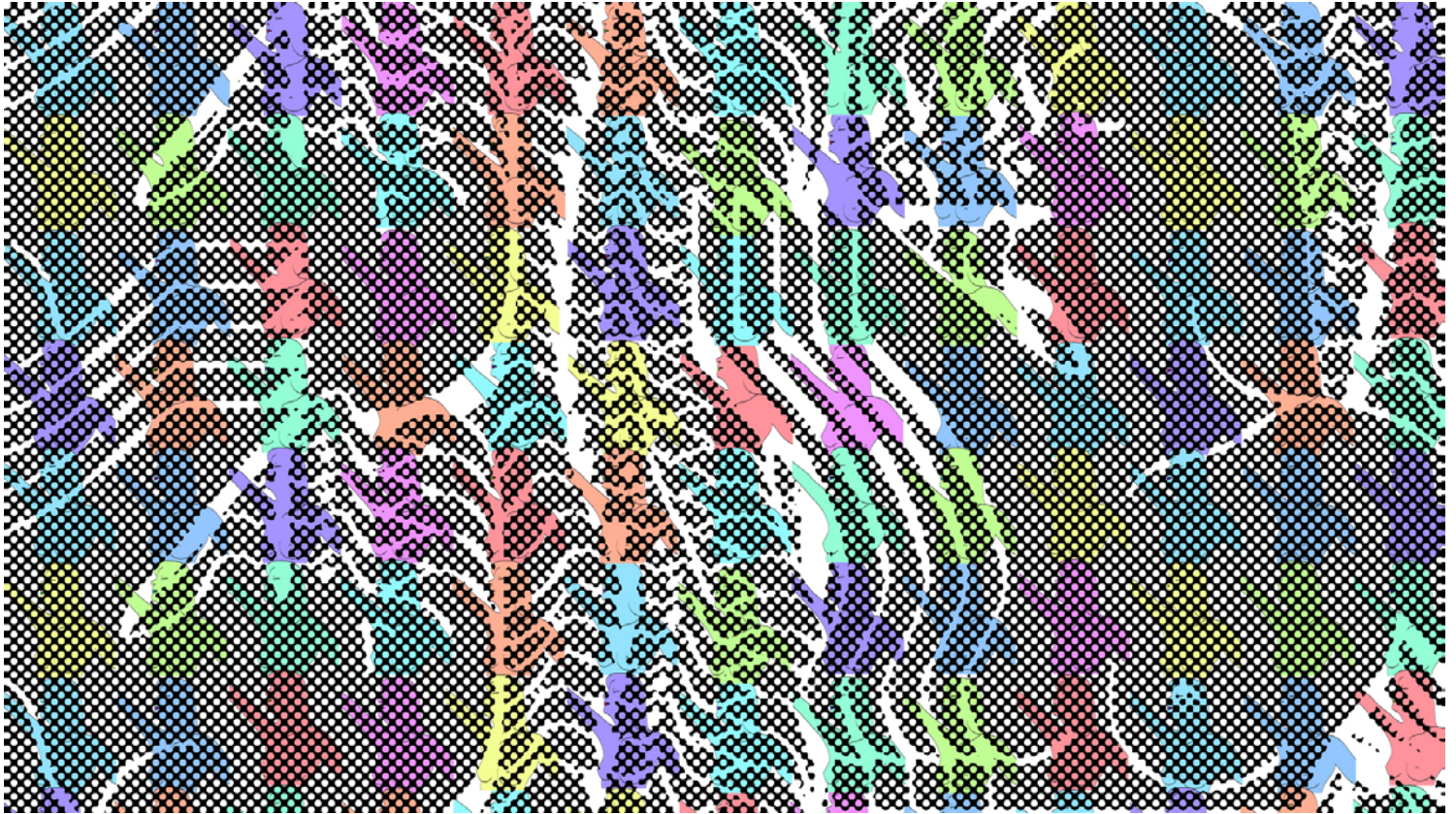
Cover picture:  
welters<sup>®</sup> Green Woman









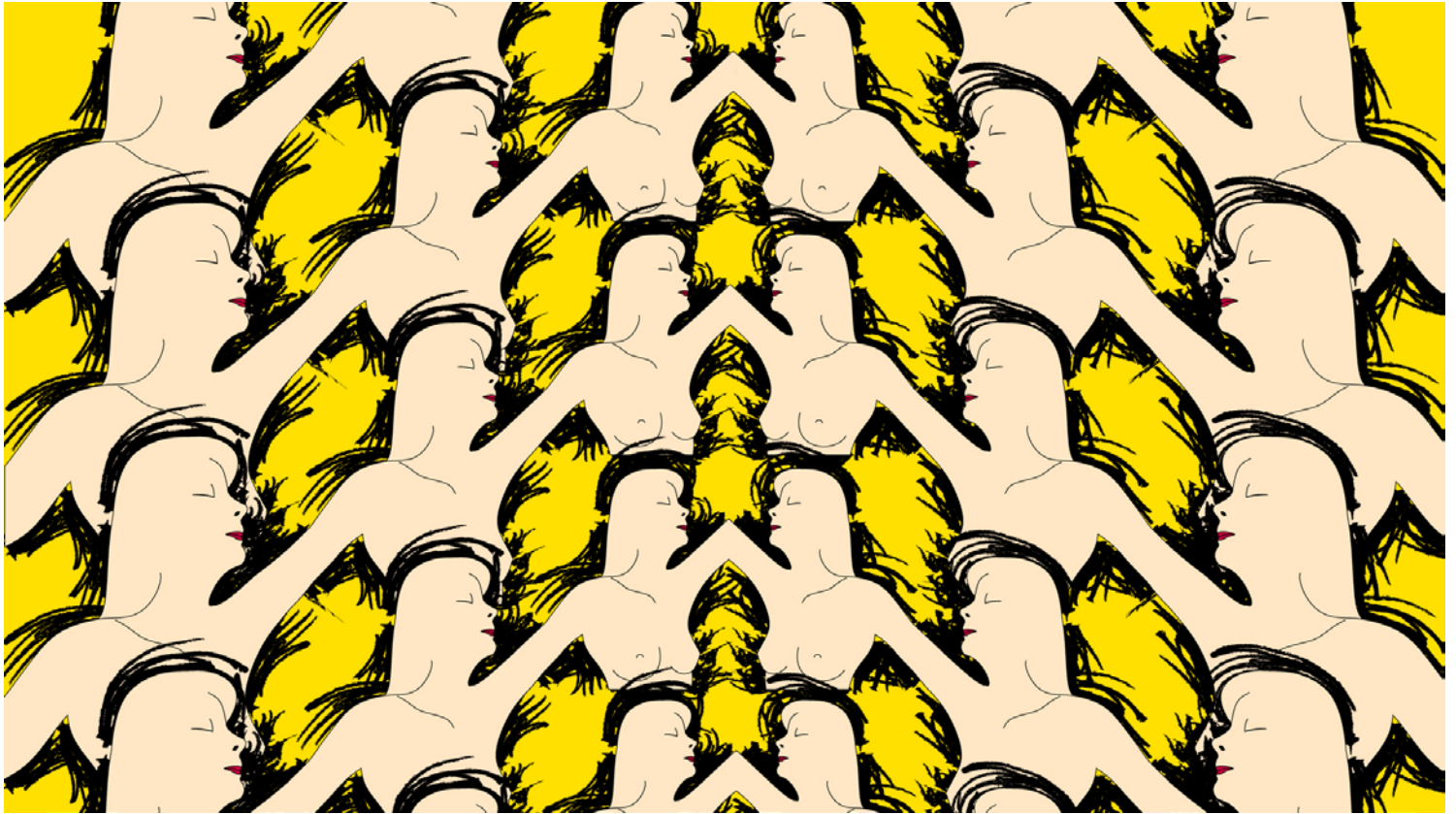




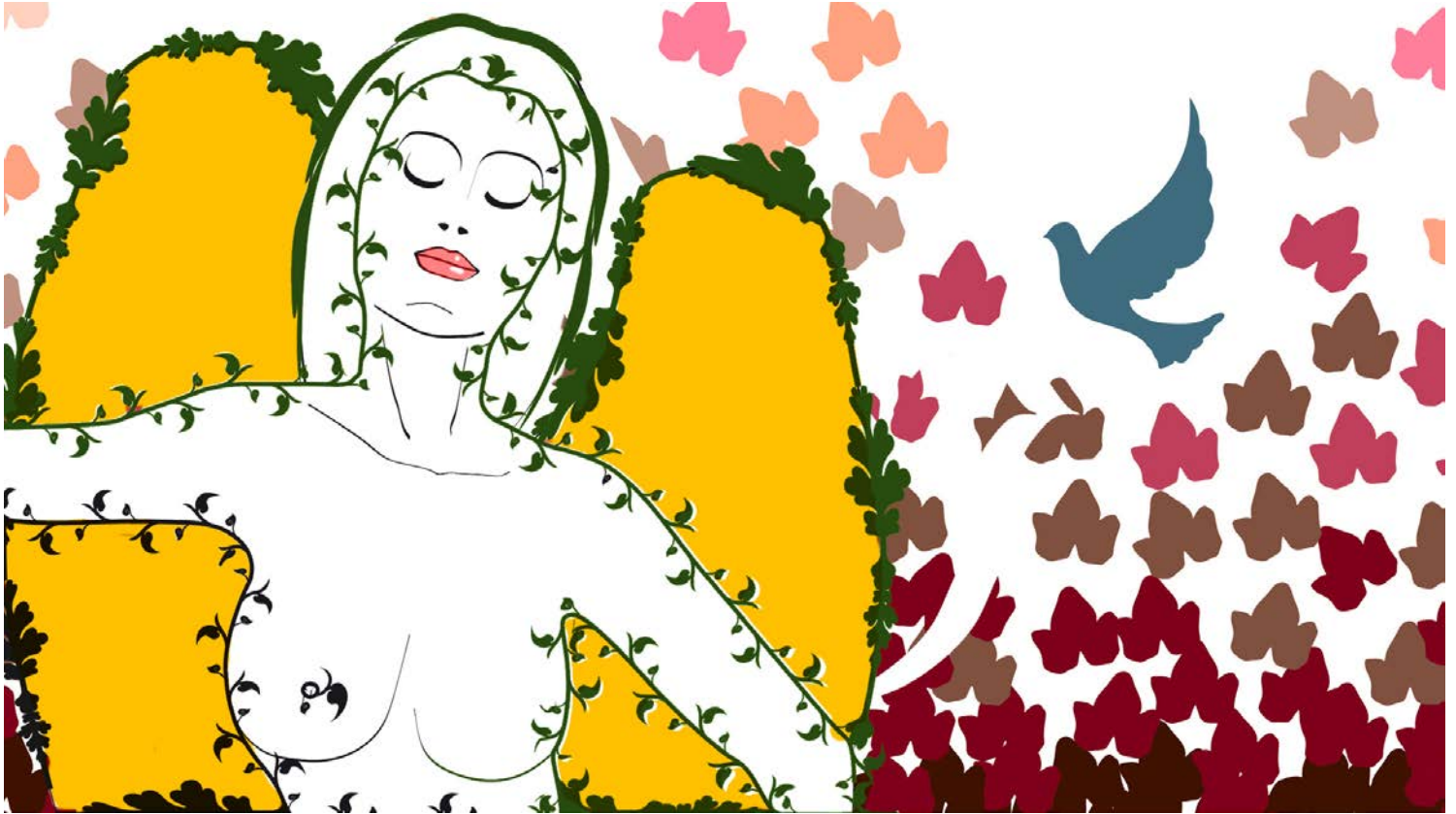


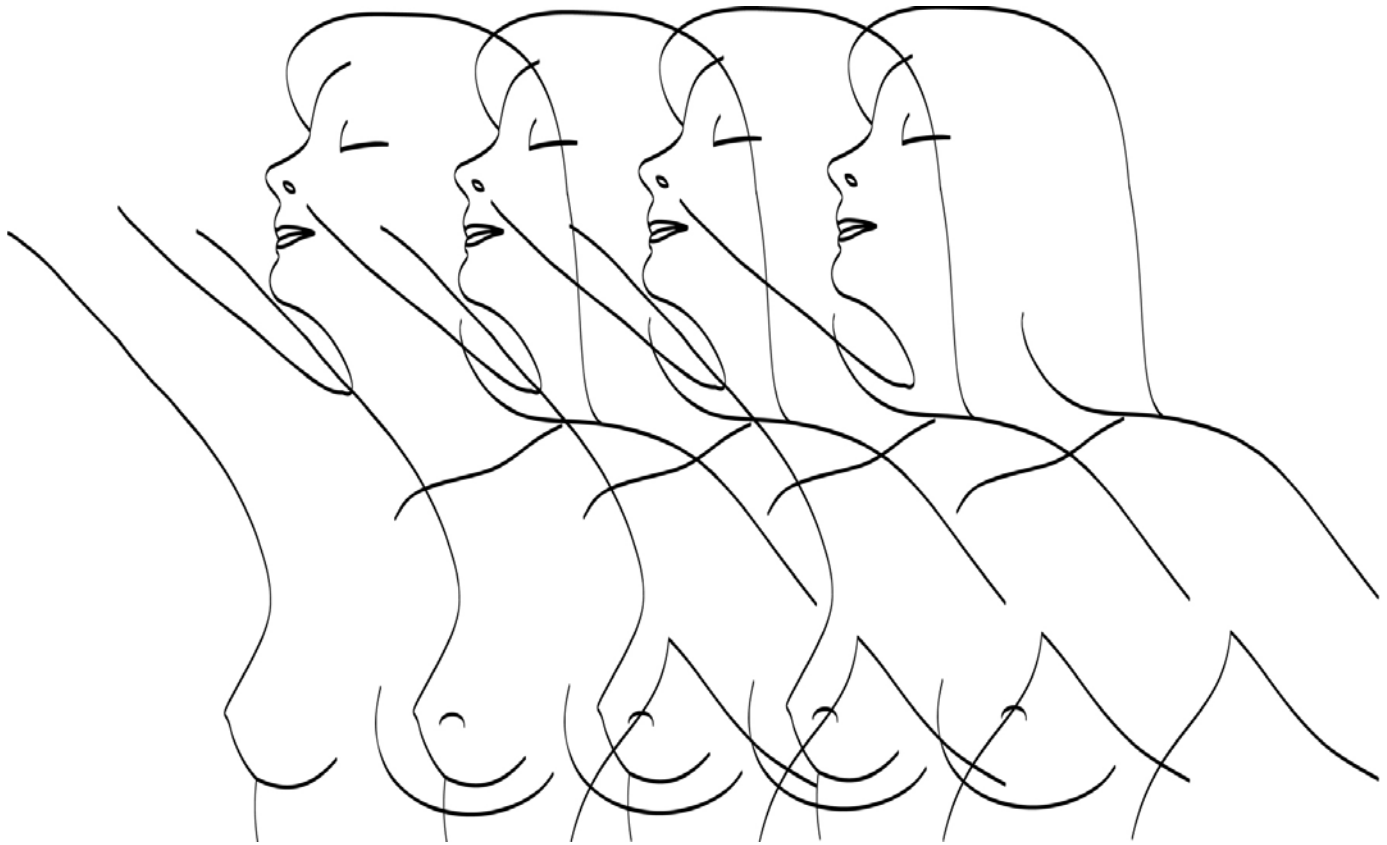










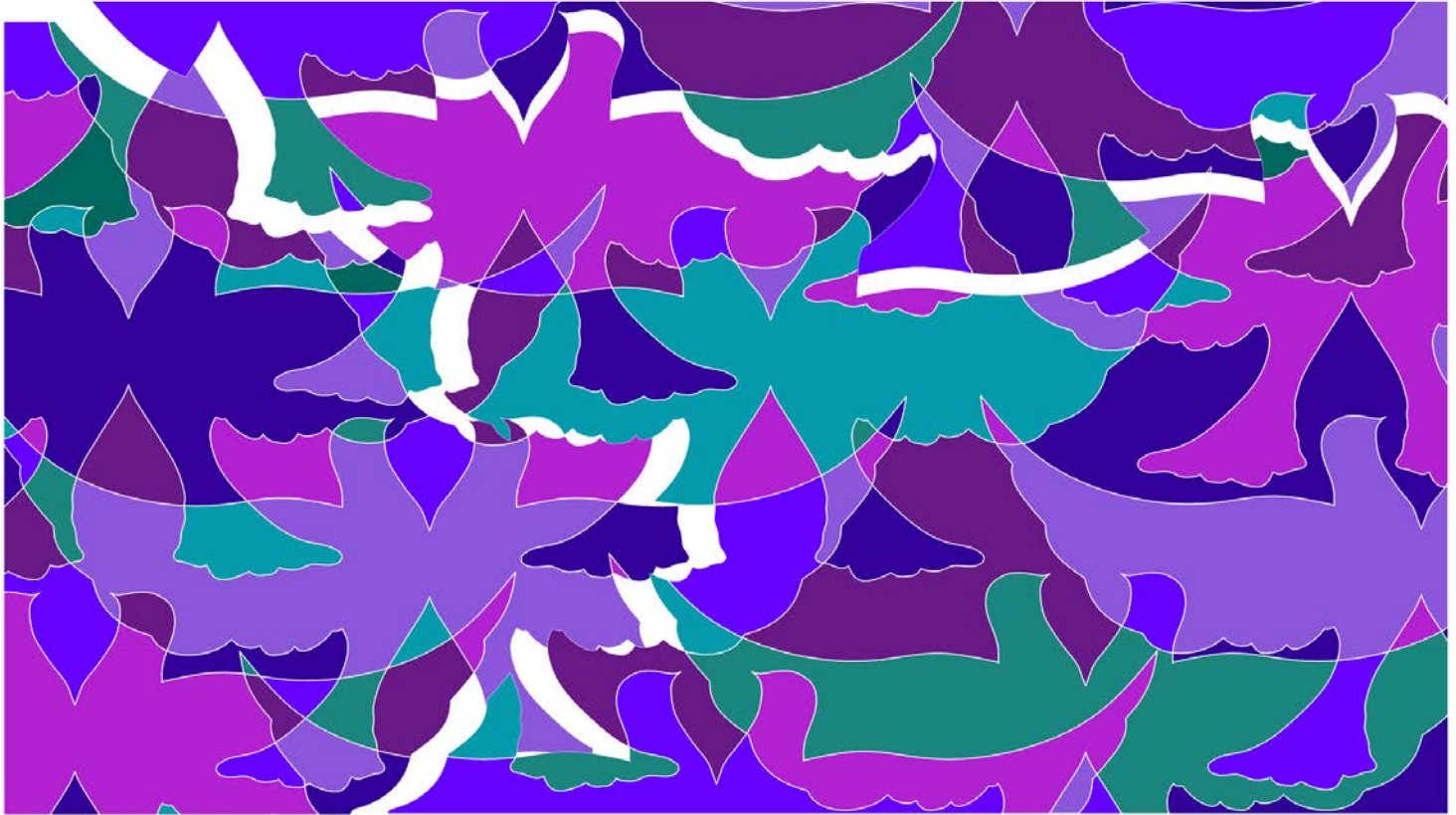


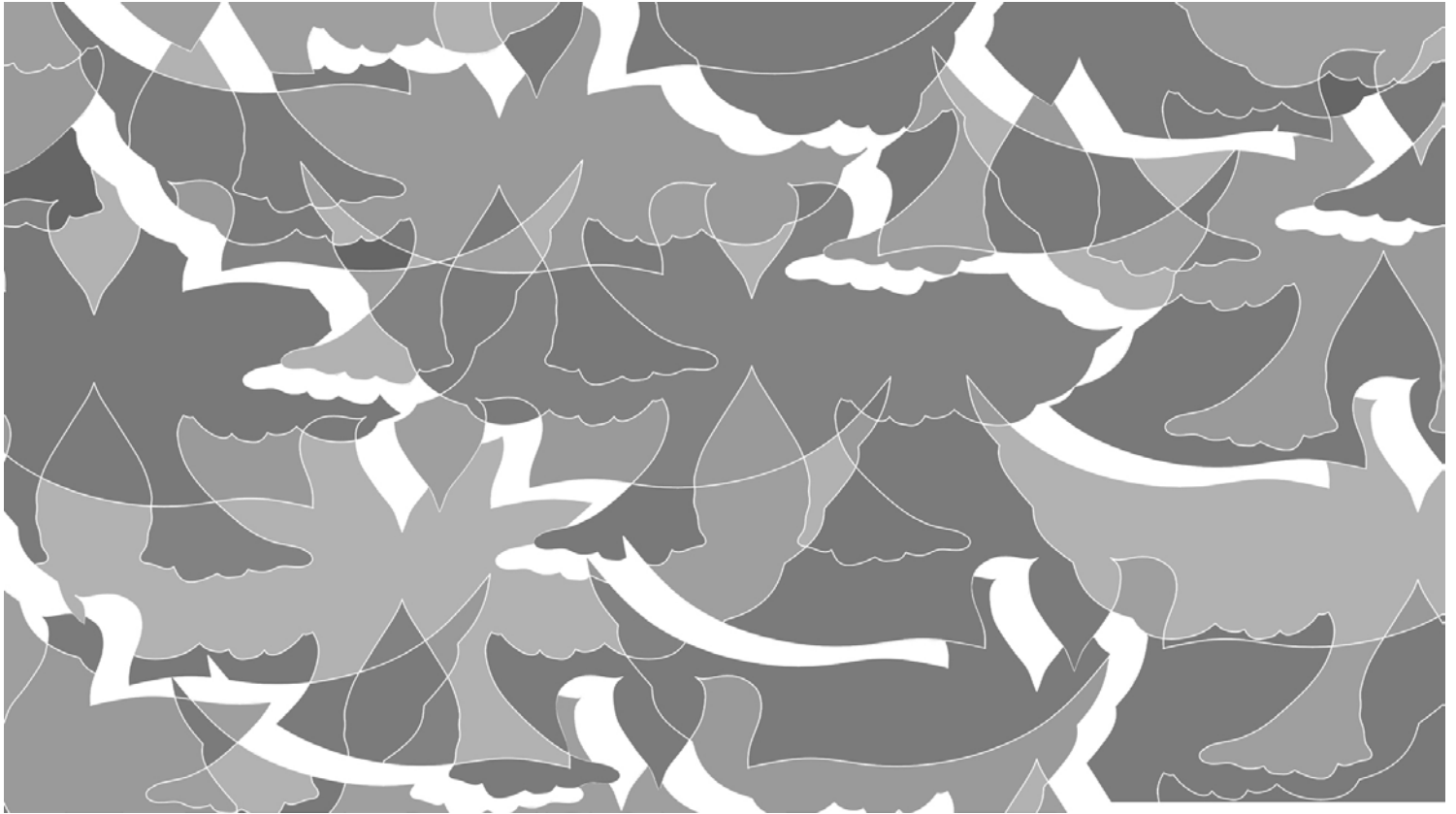


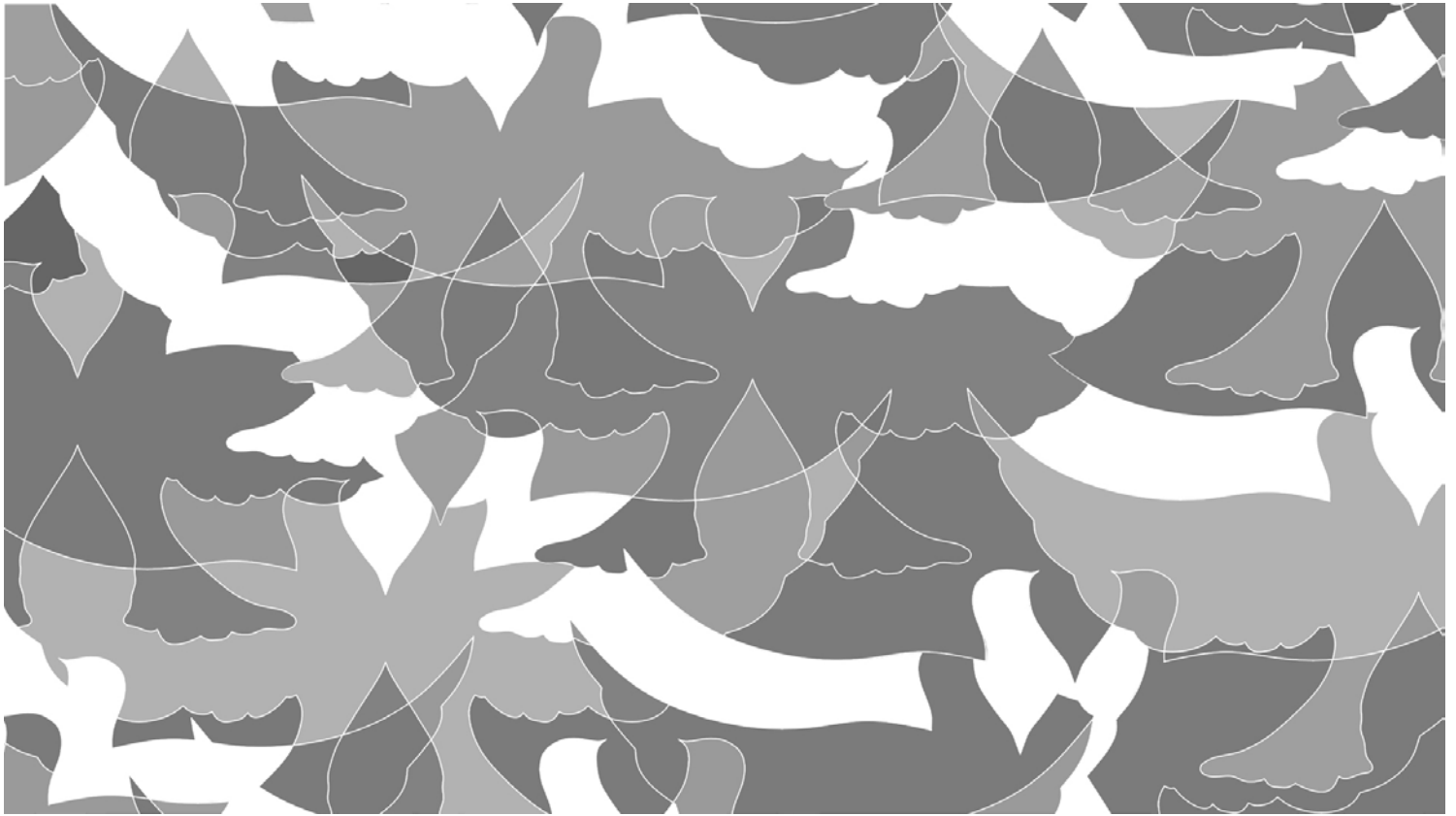


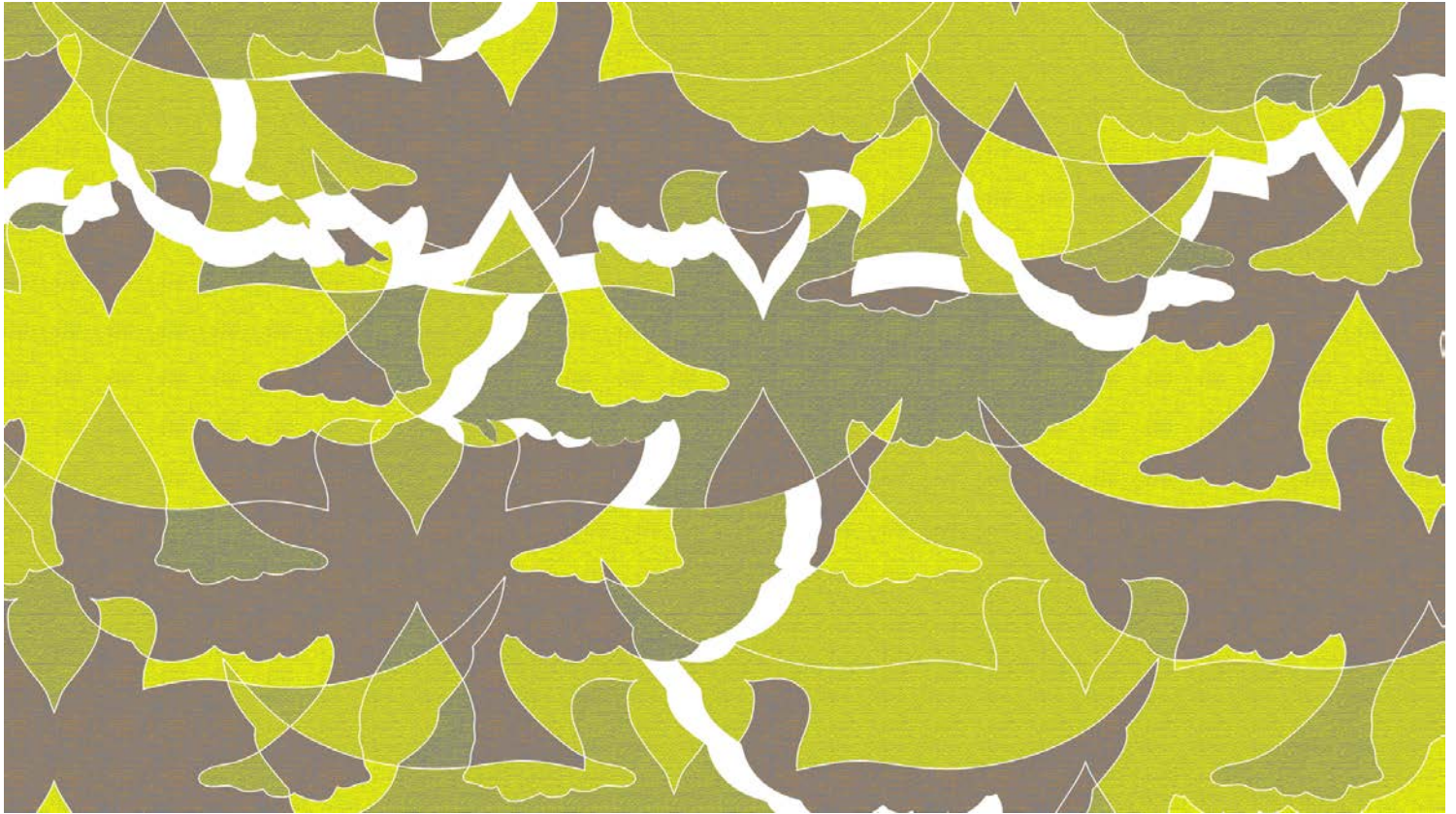




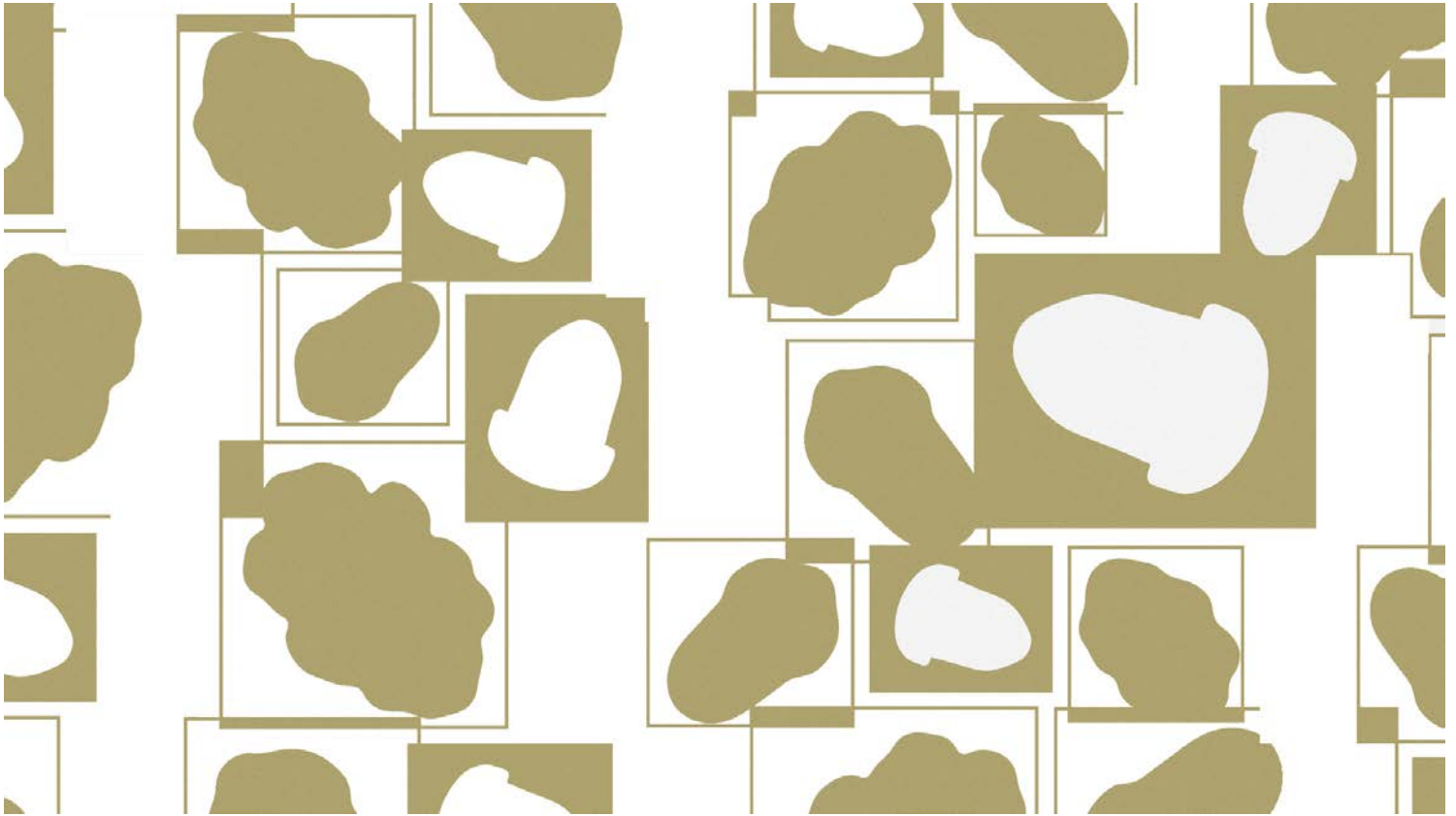






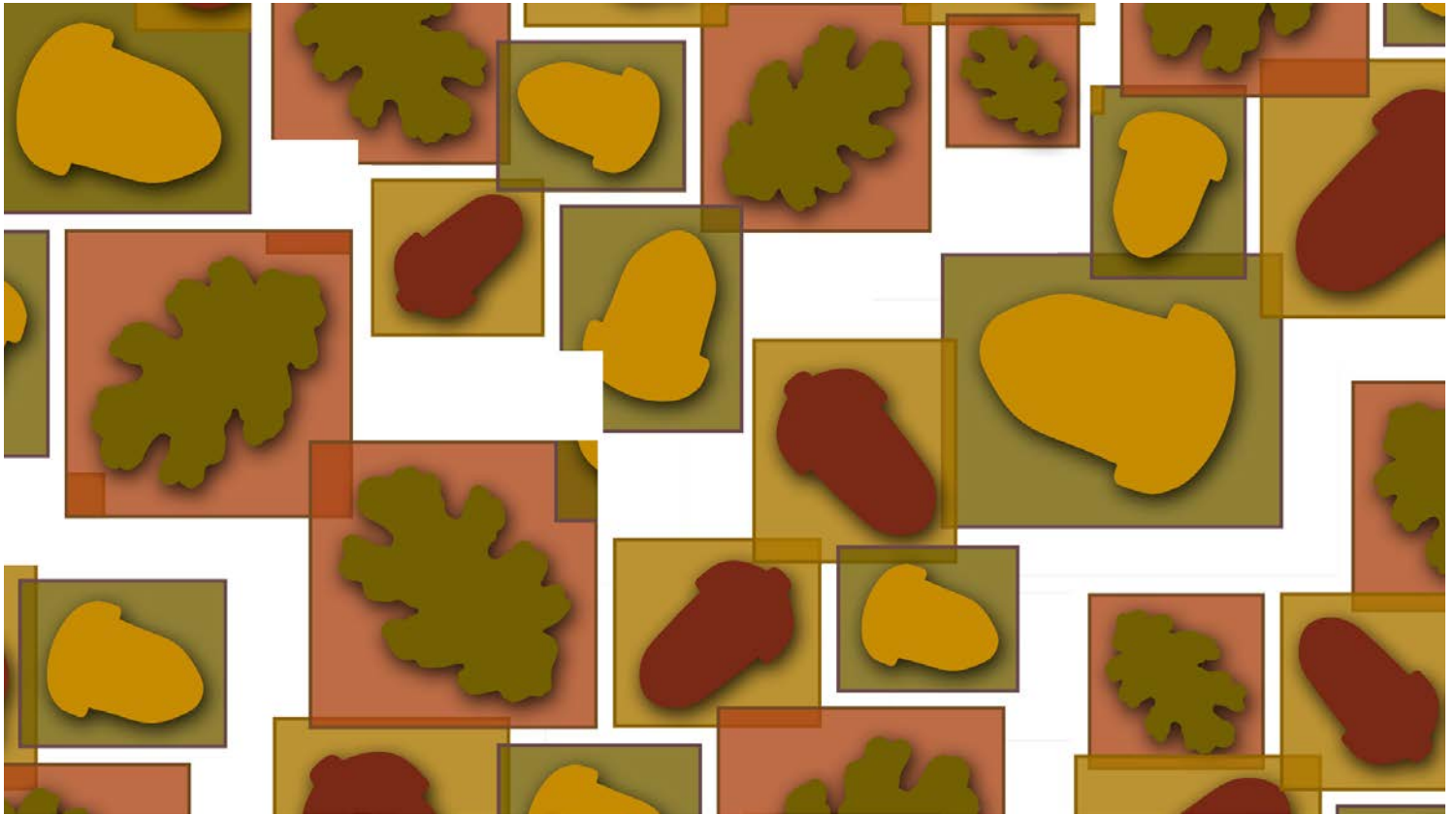


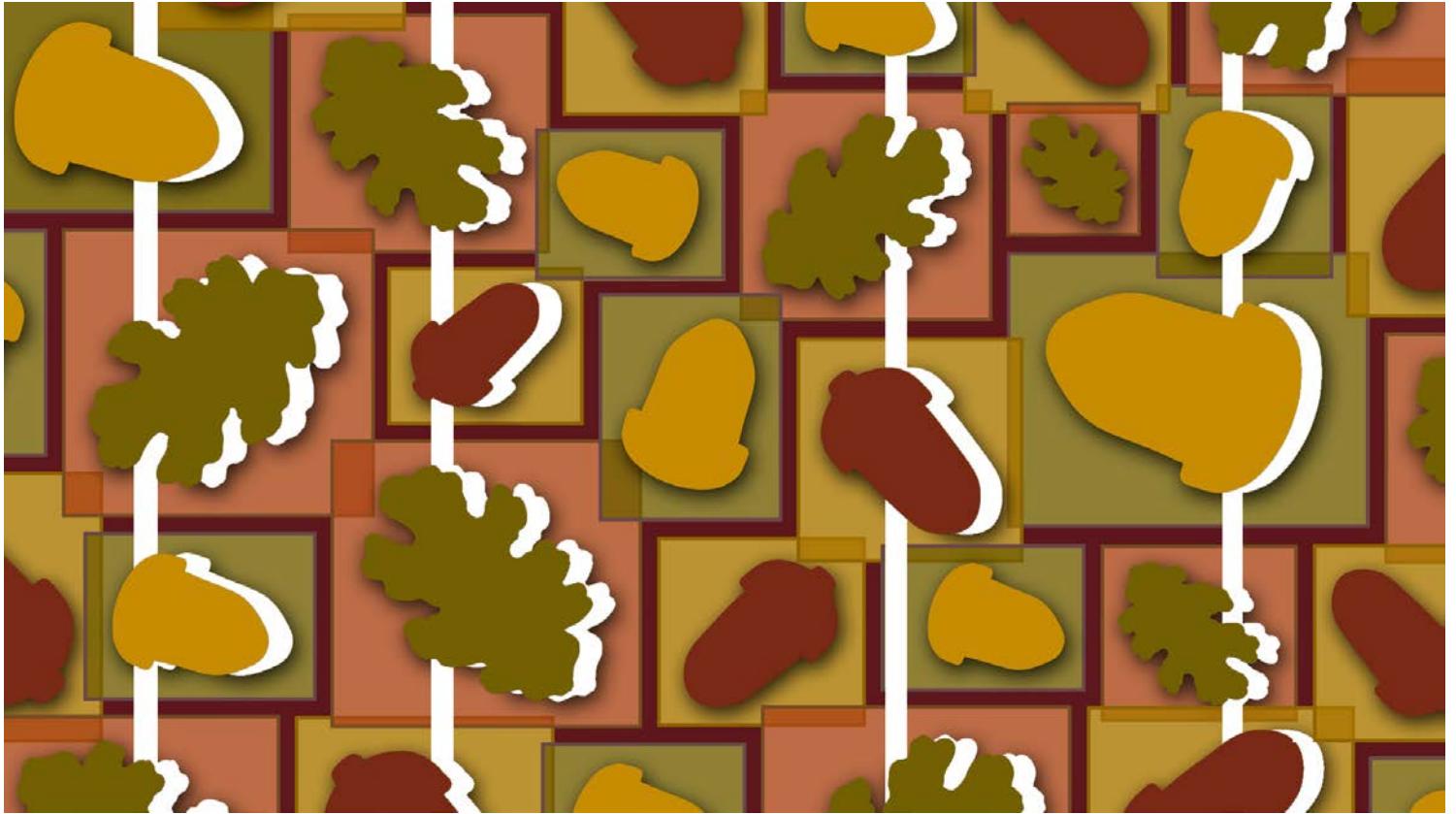


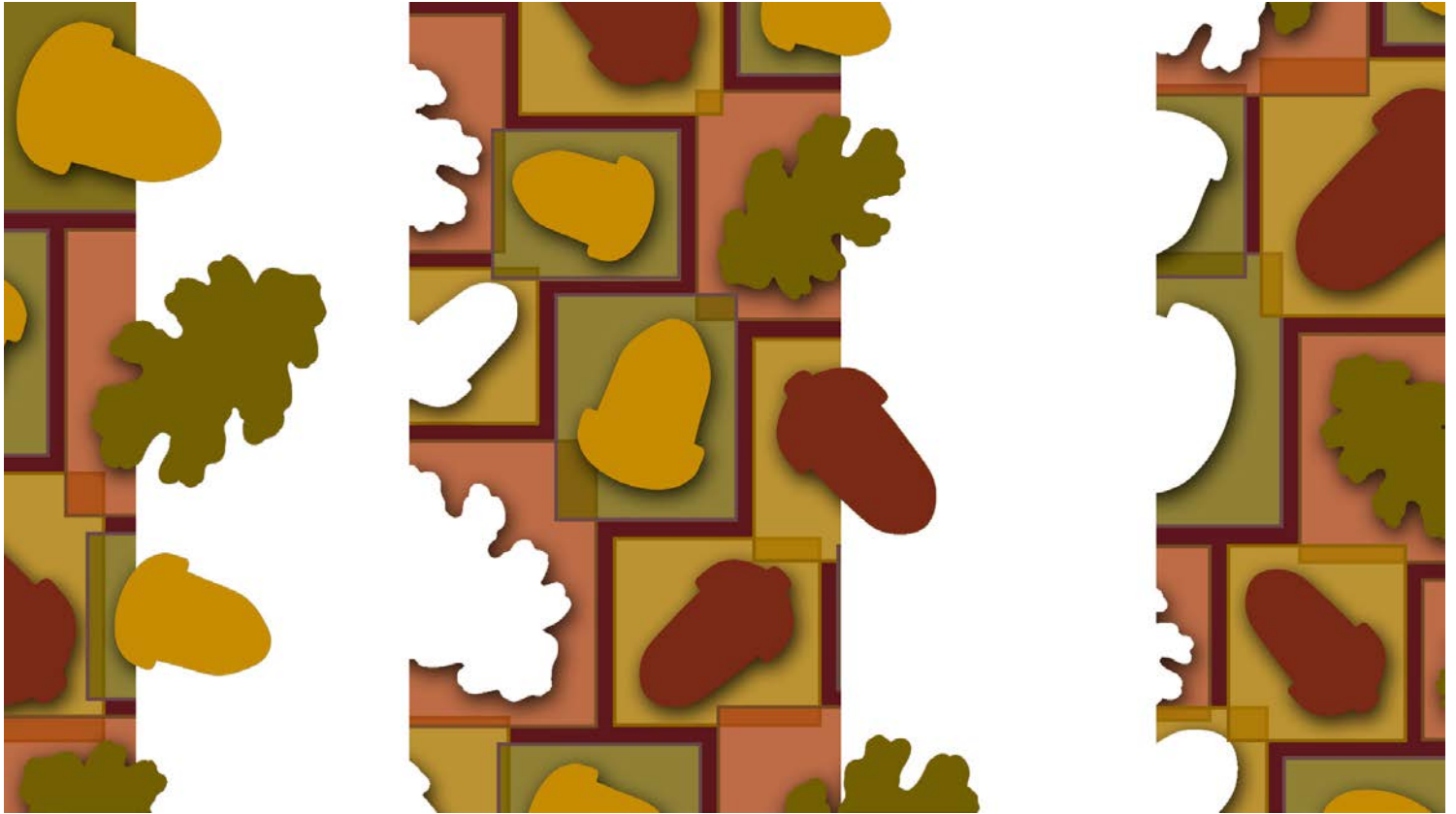








































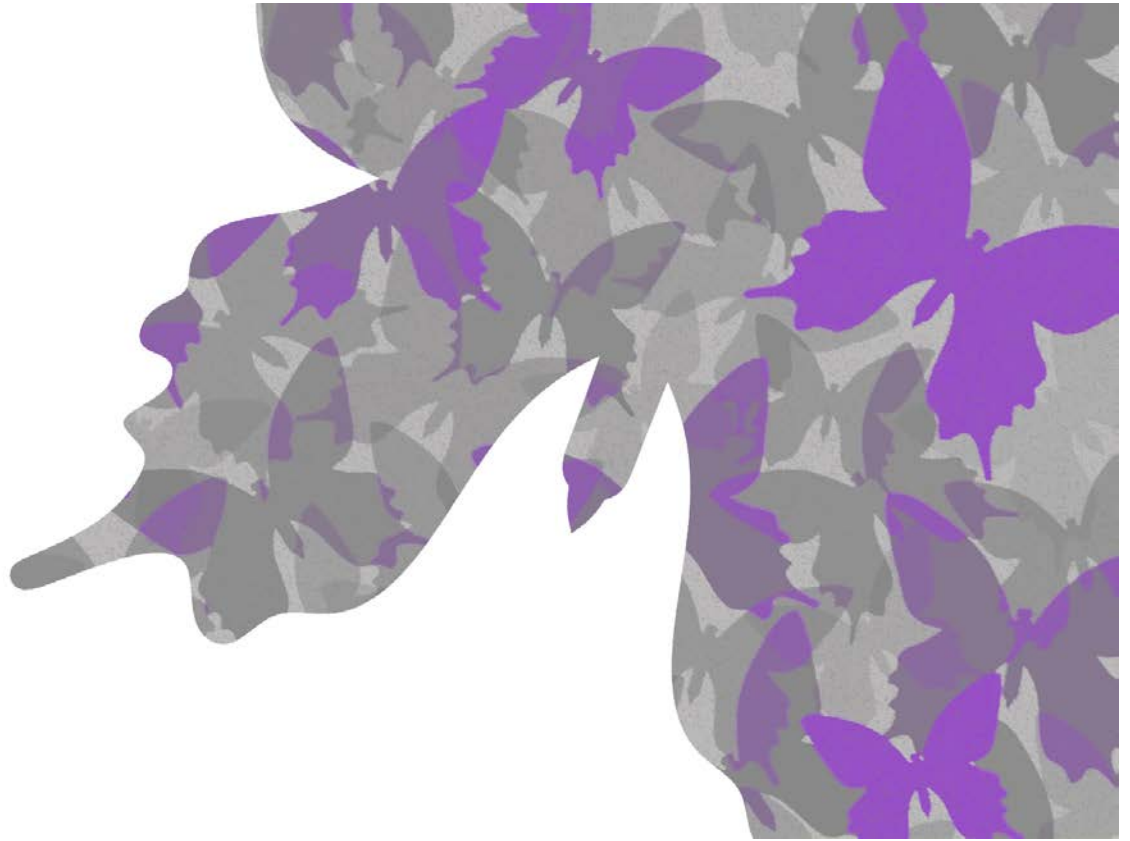










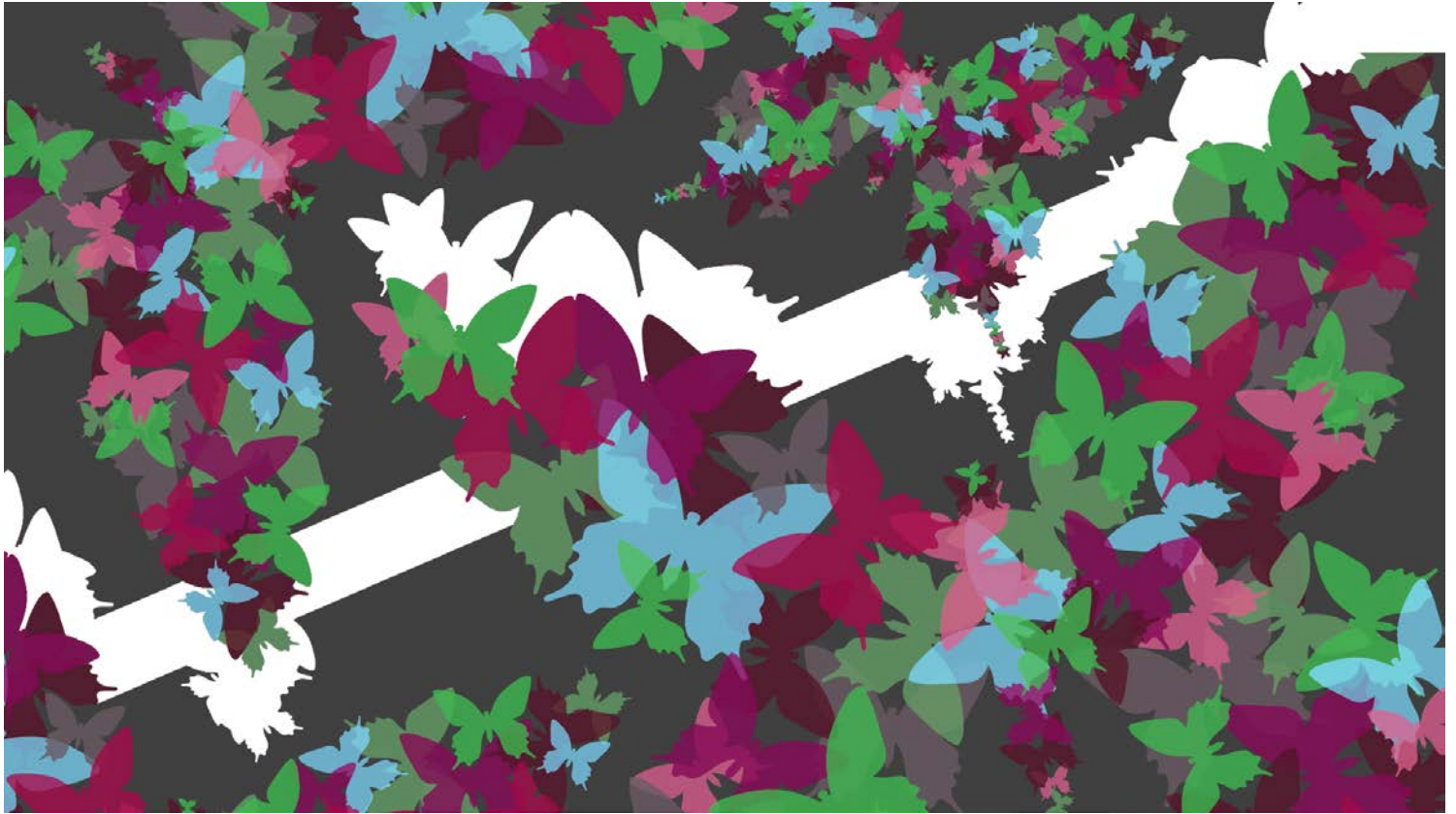




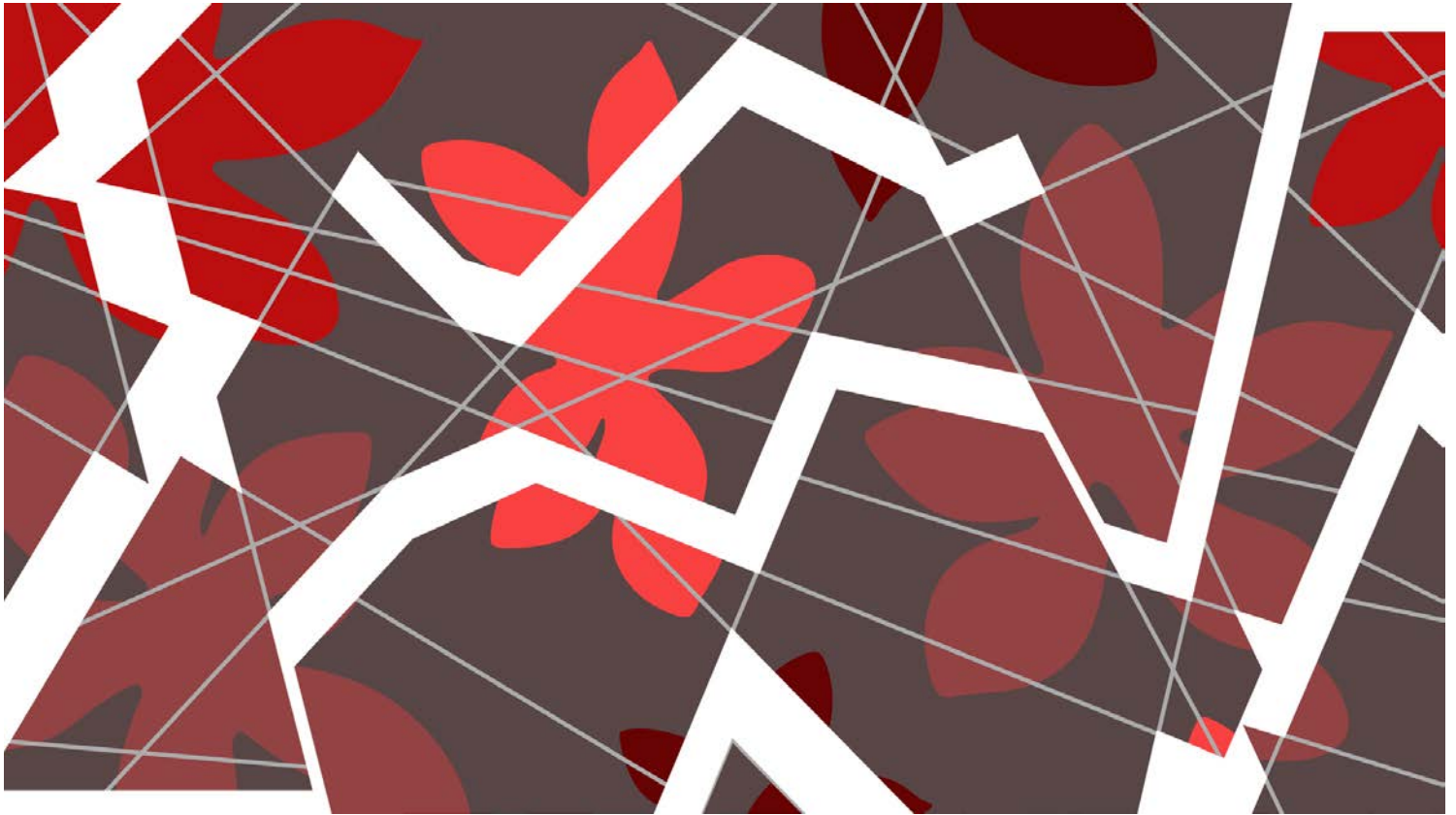


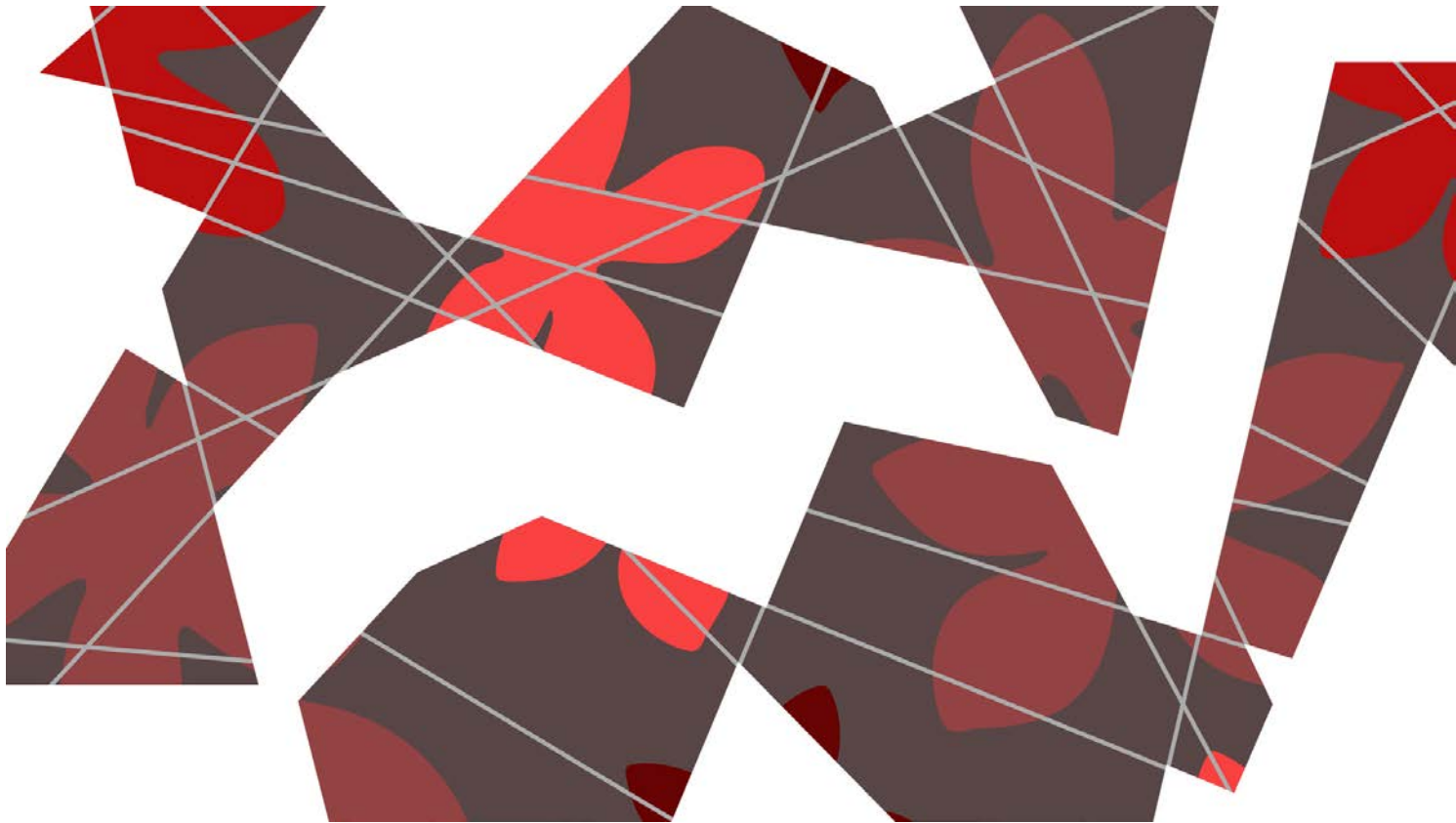


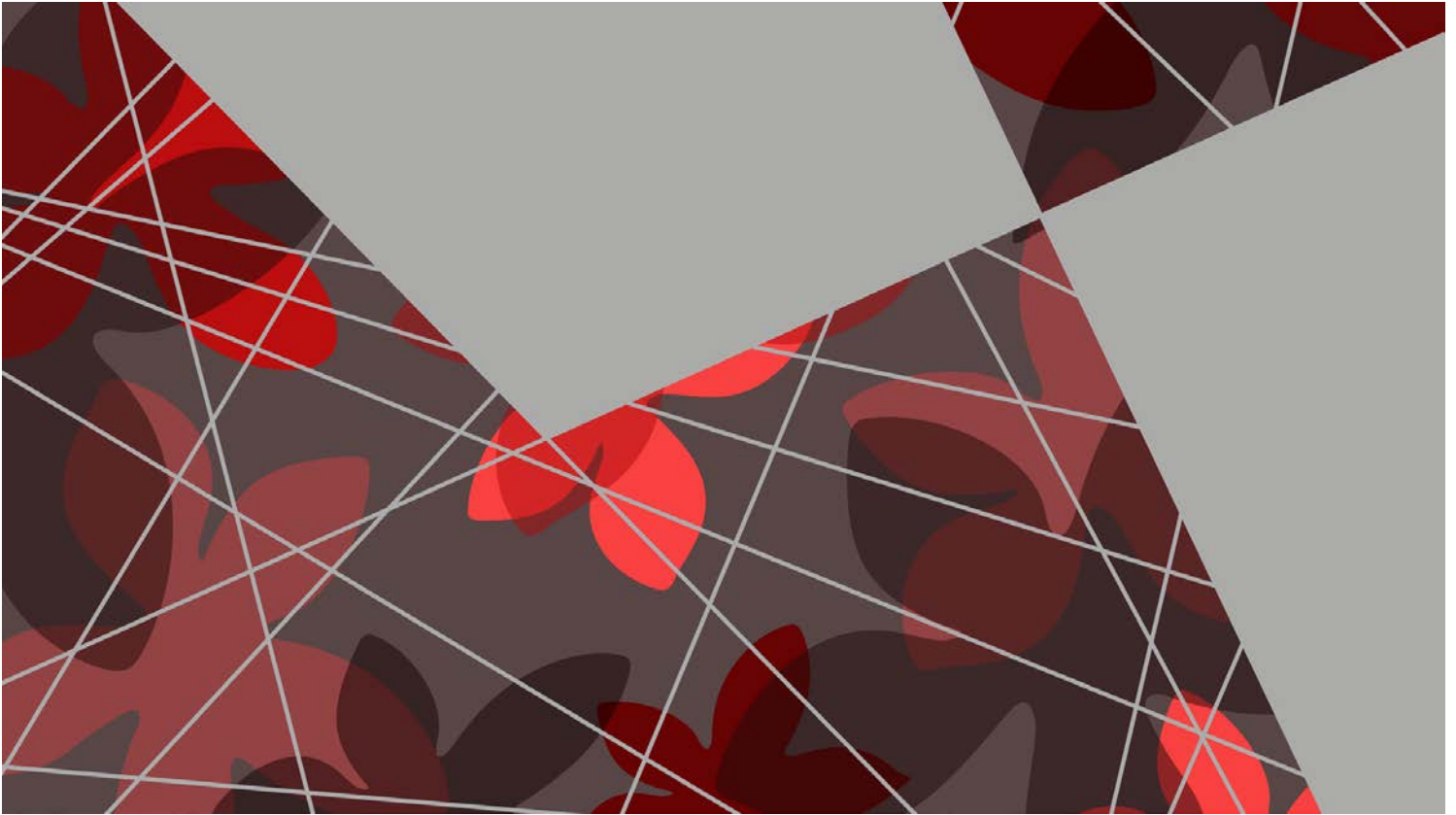


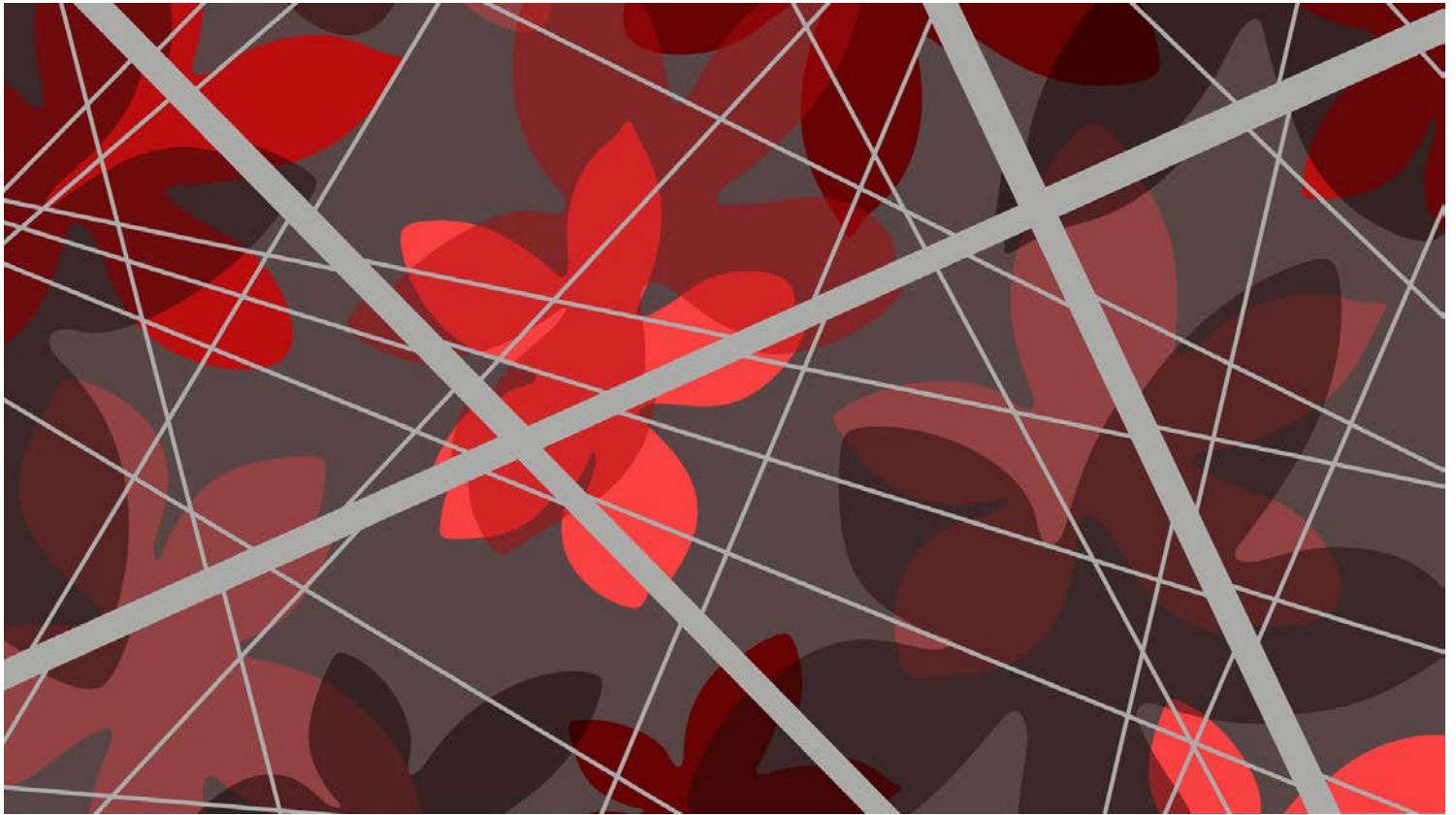


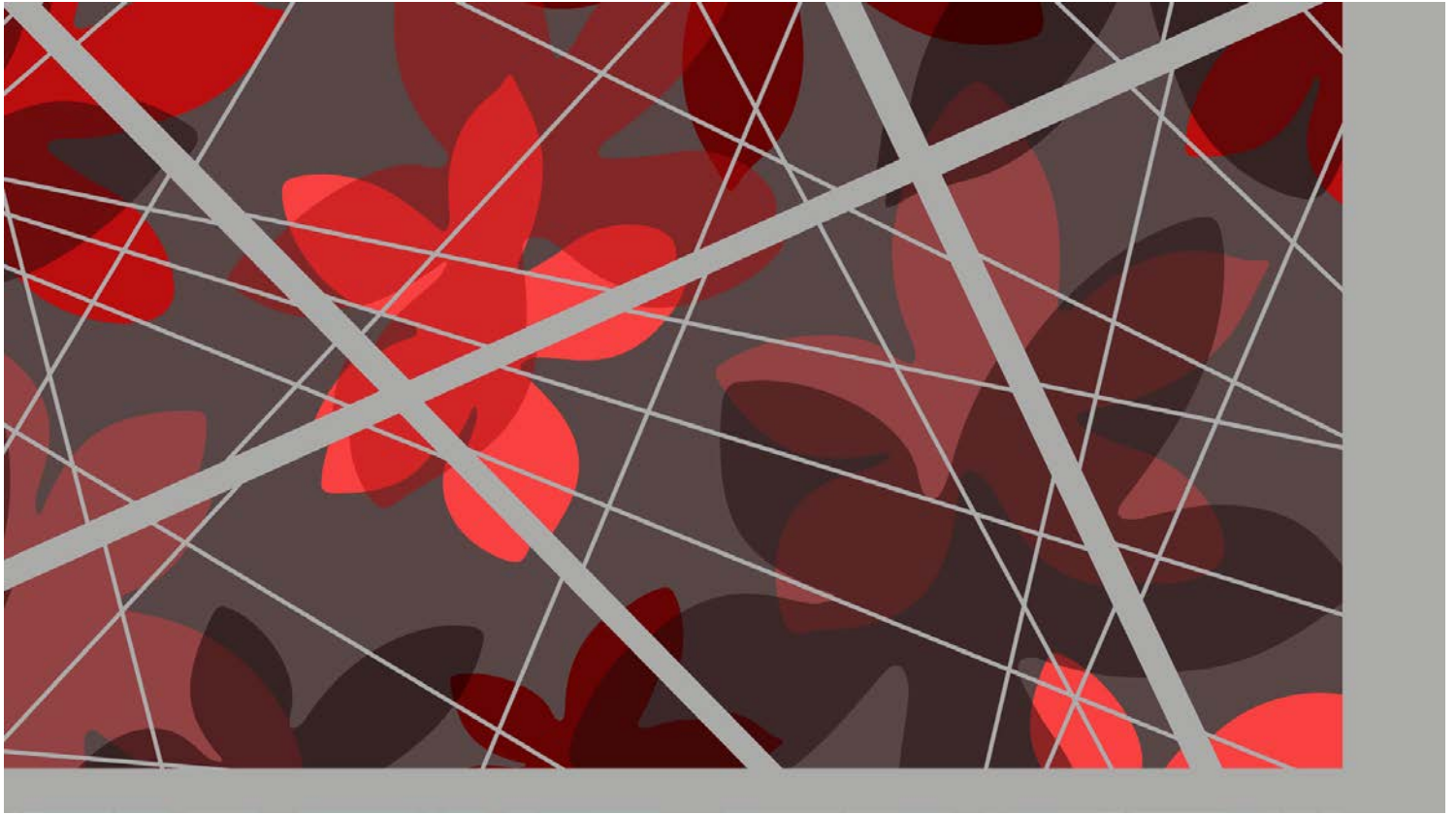










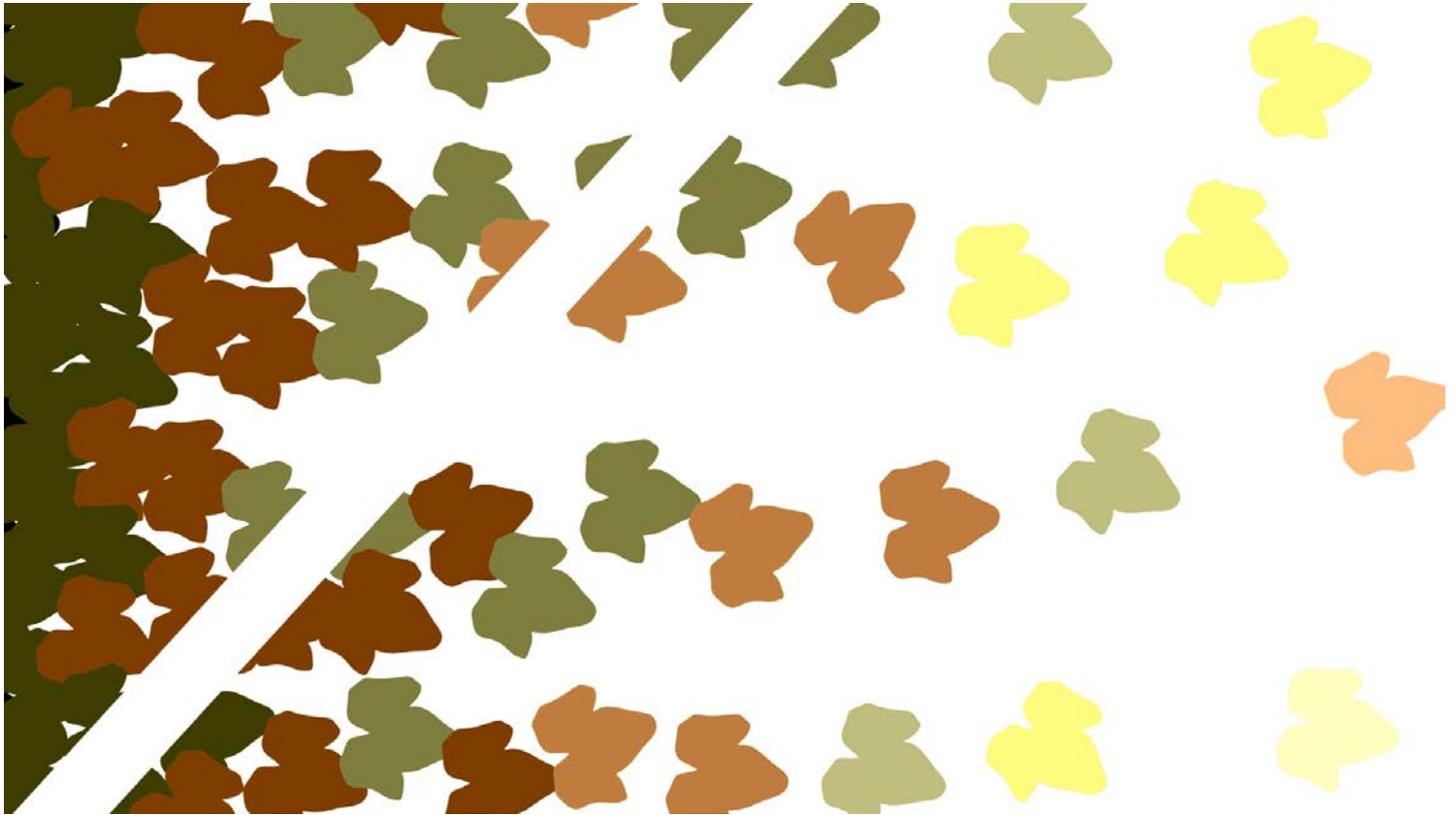




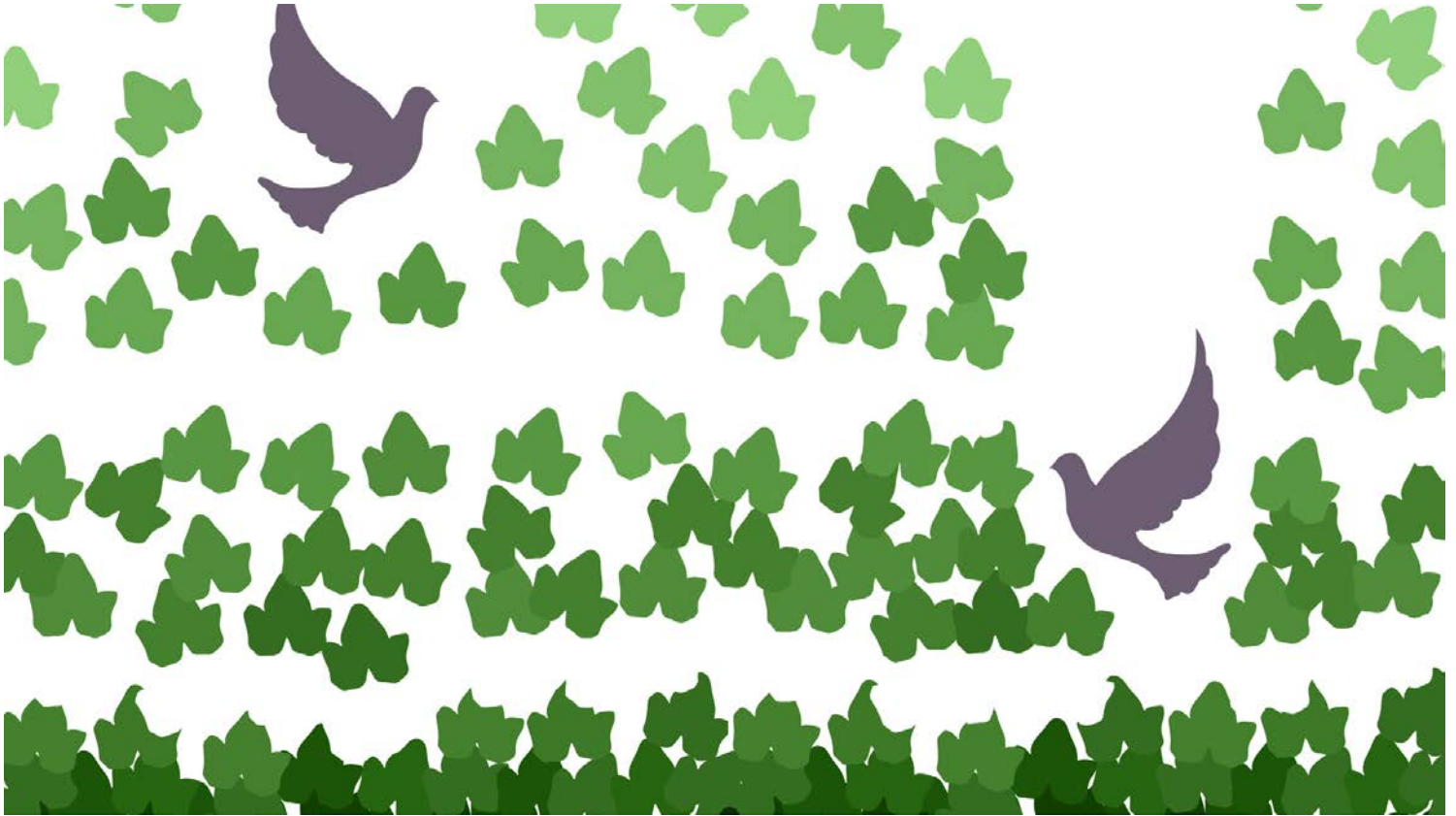


















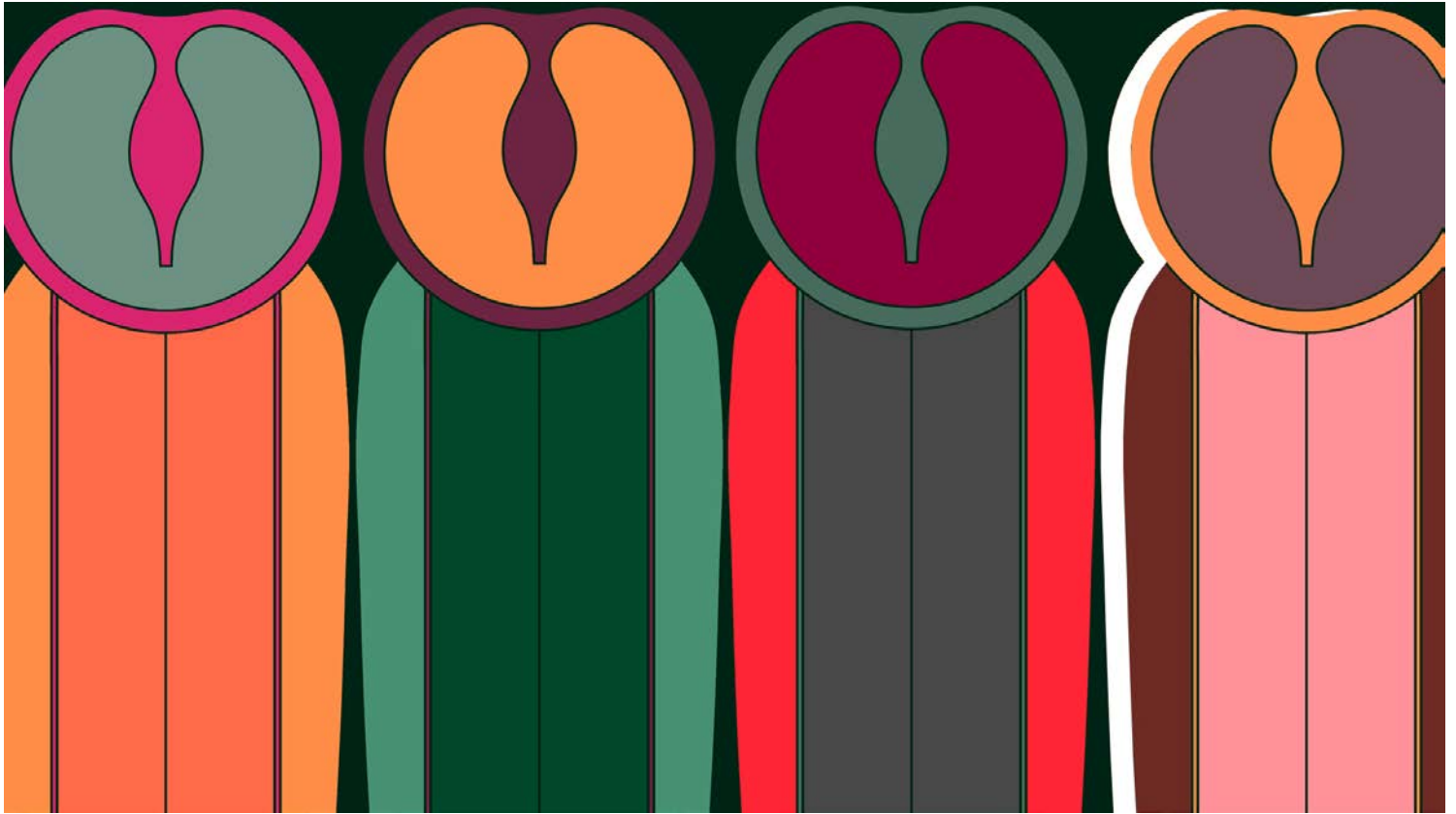




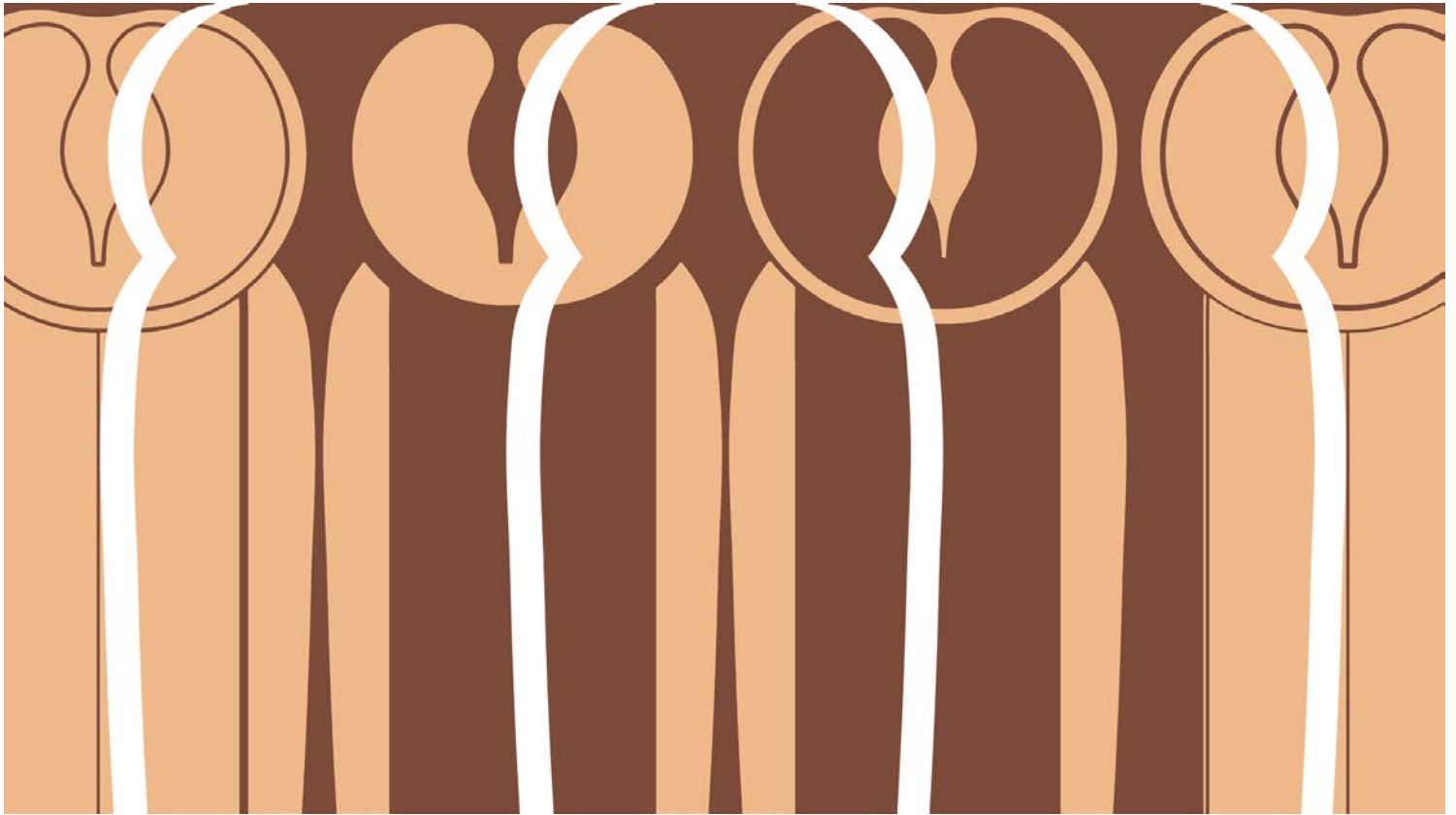








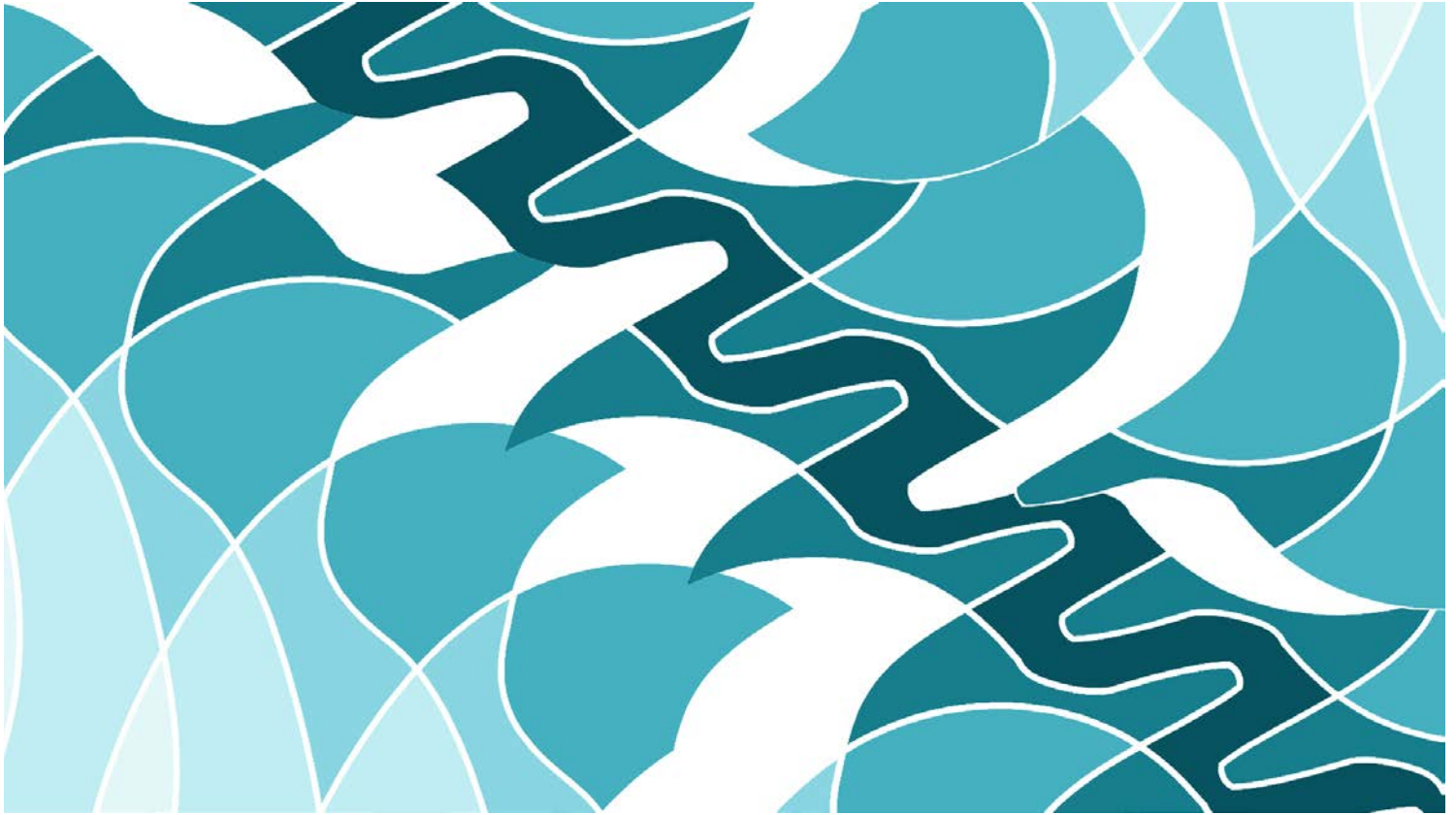




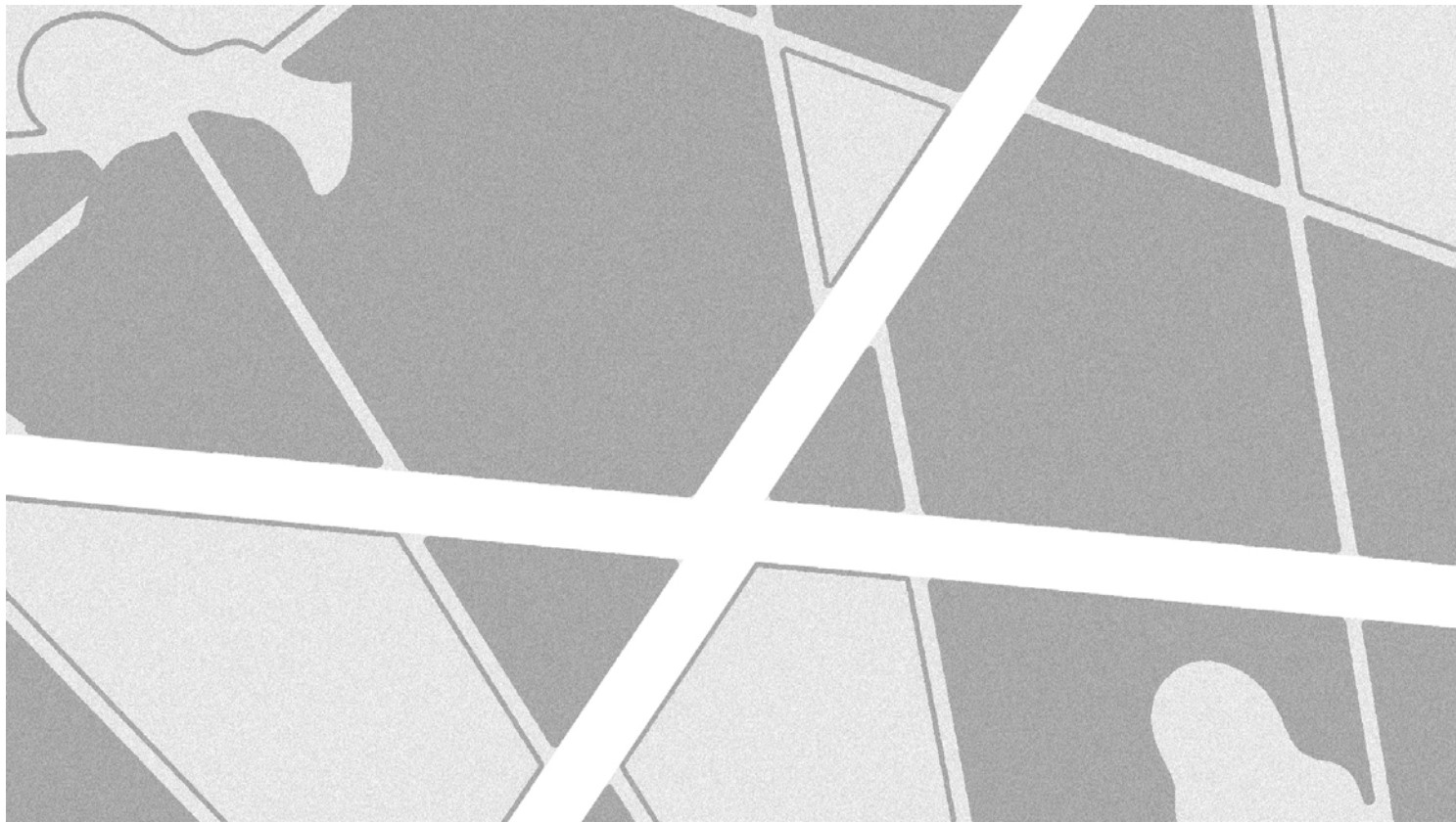














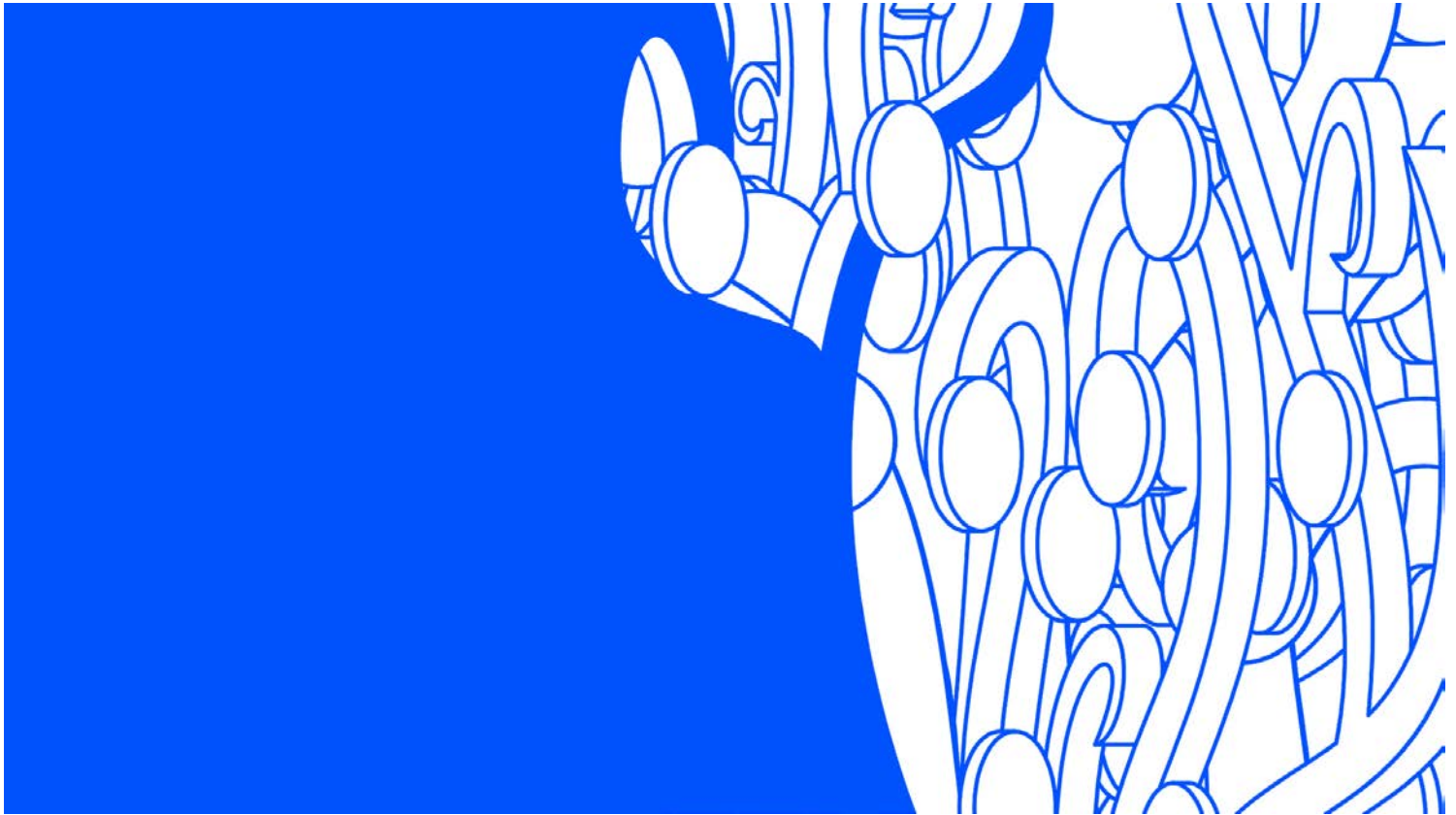












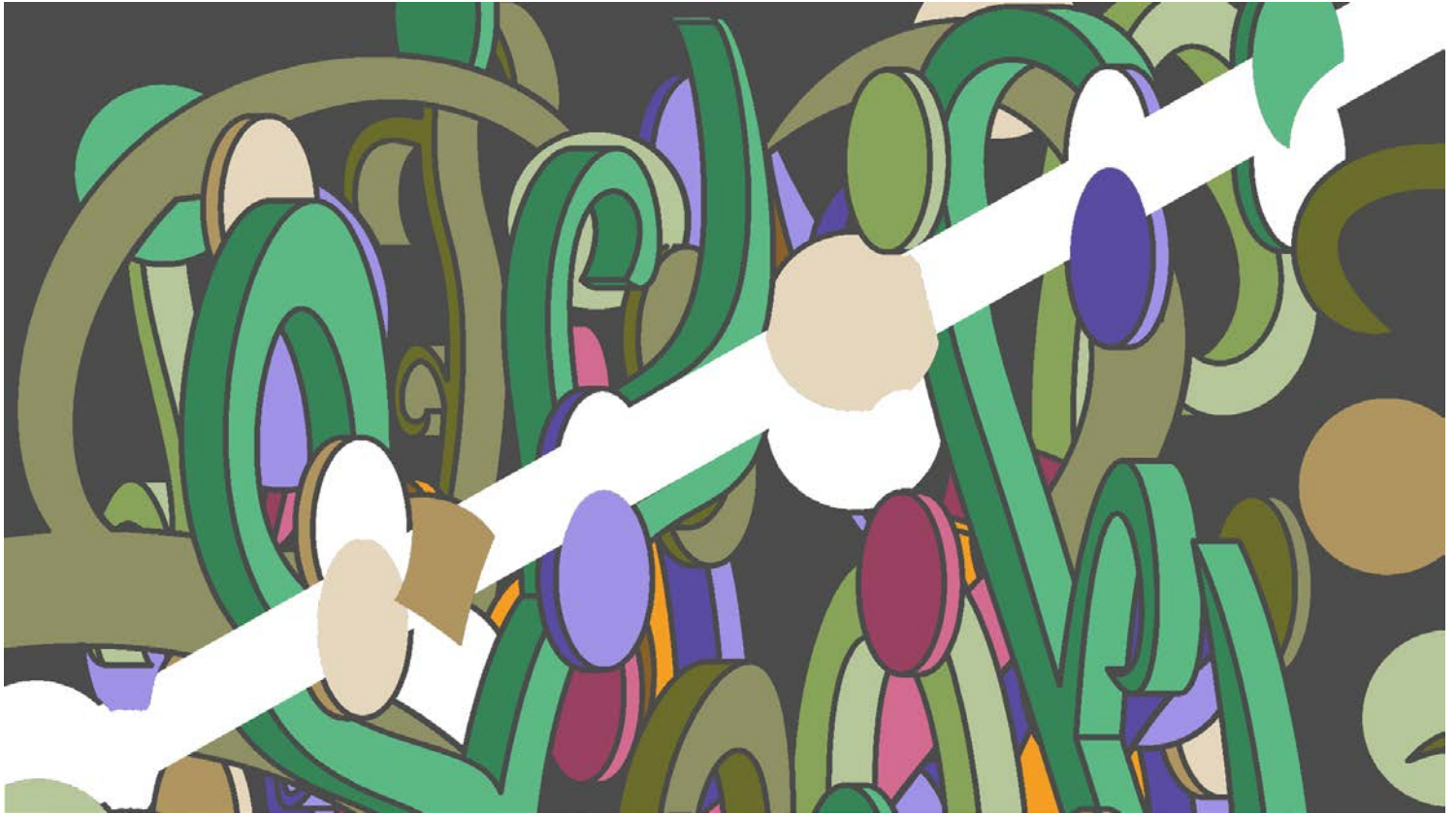






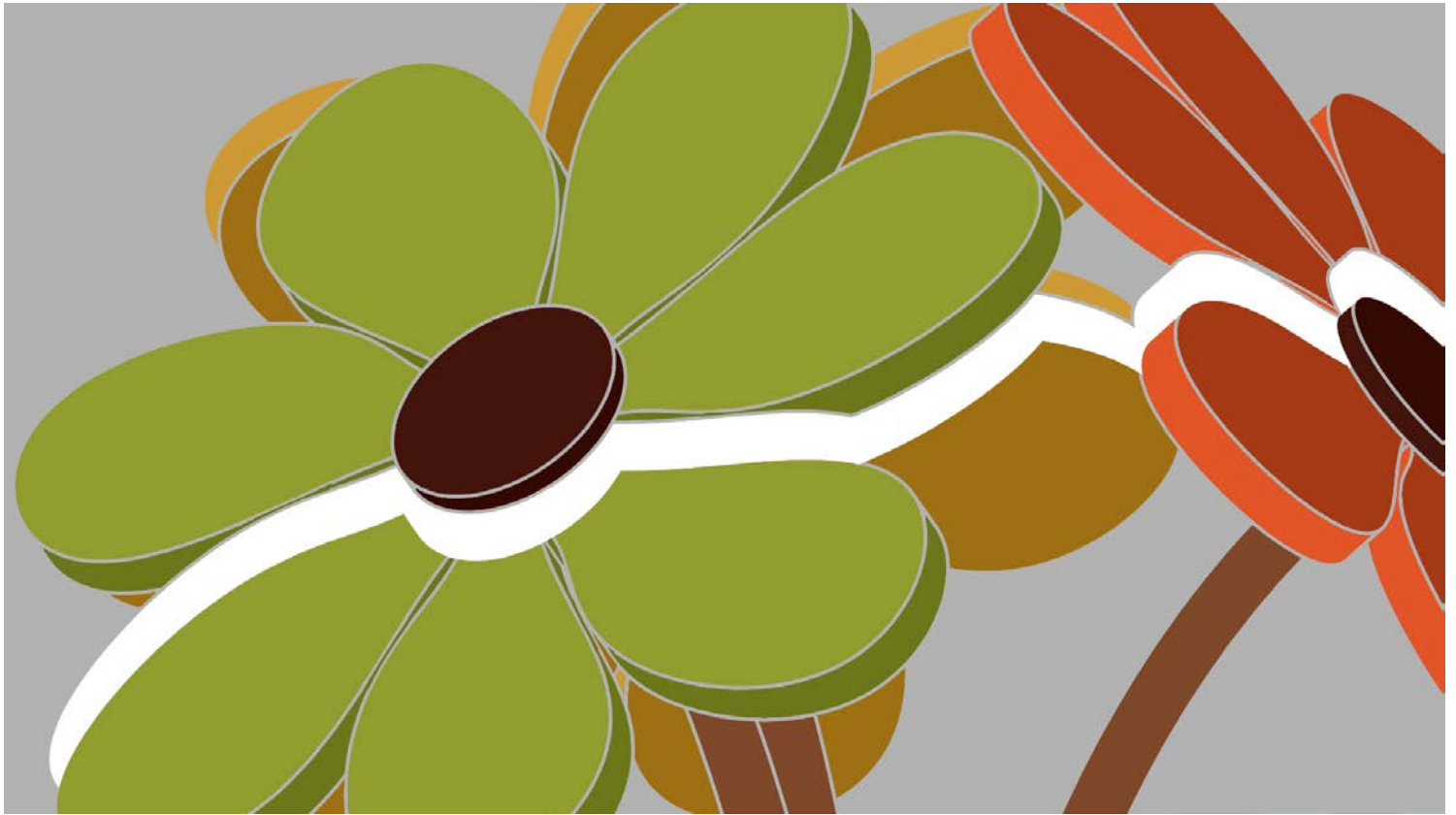


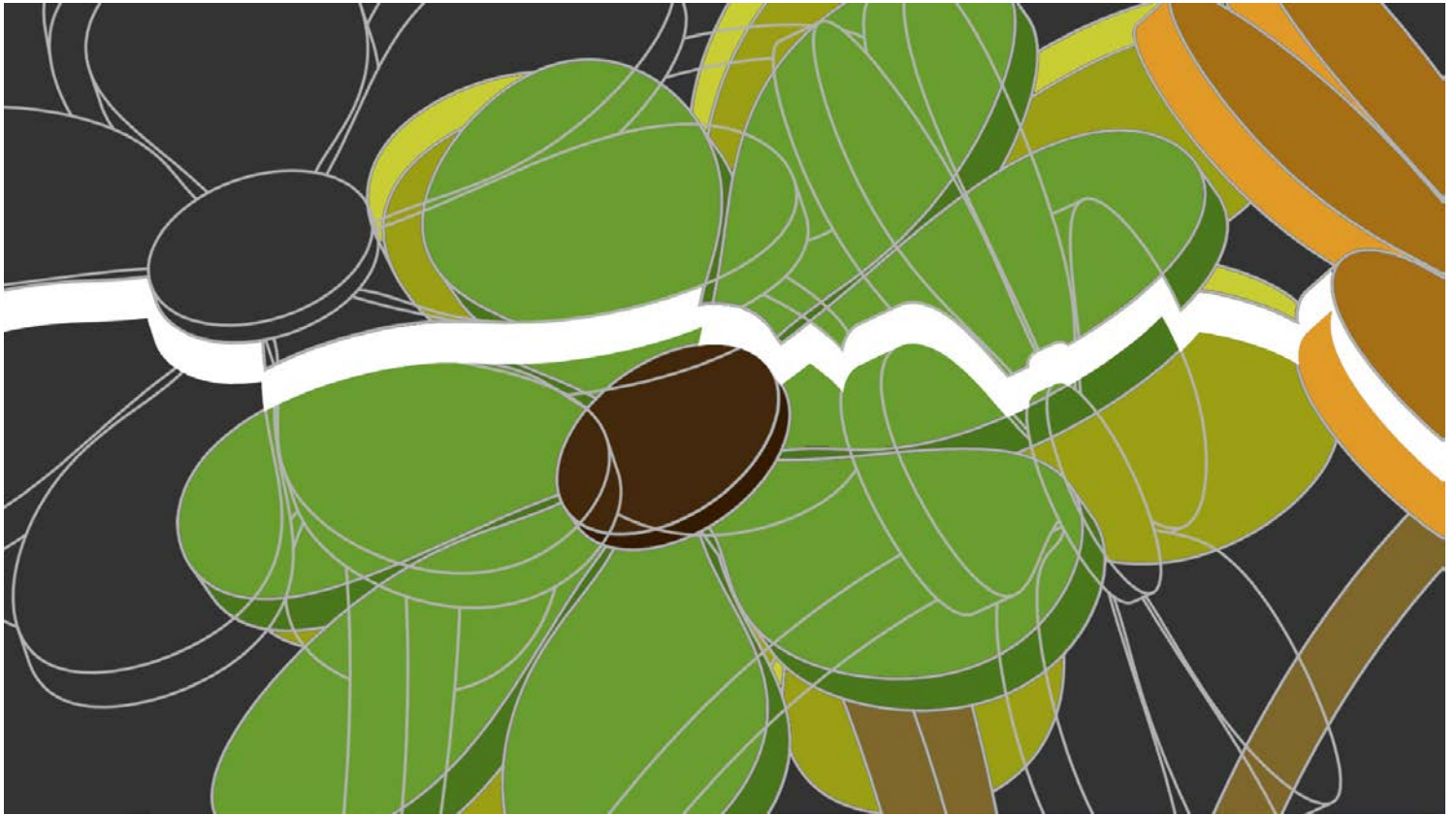






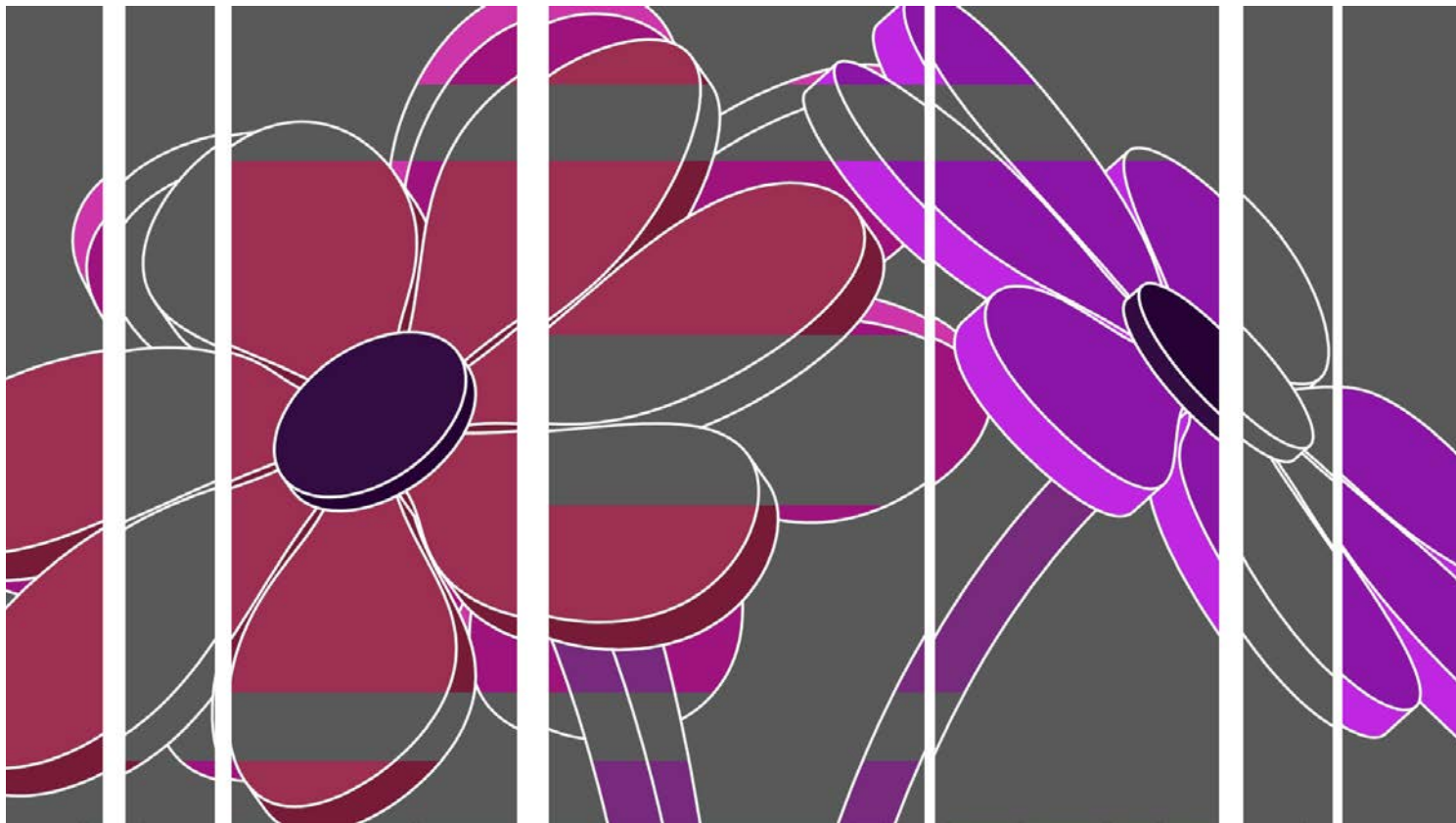








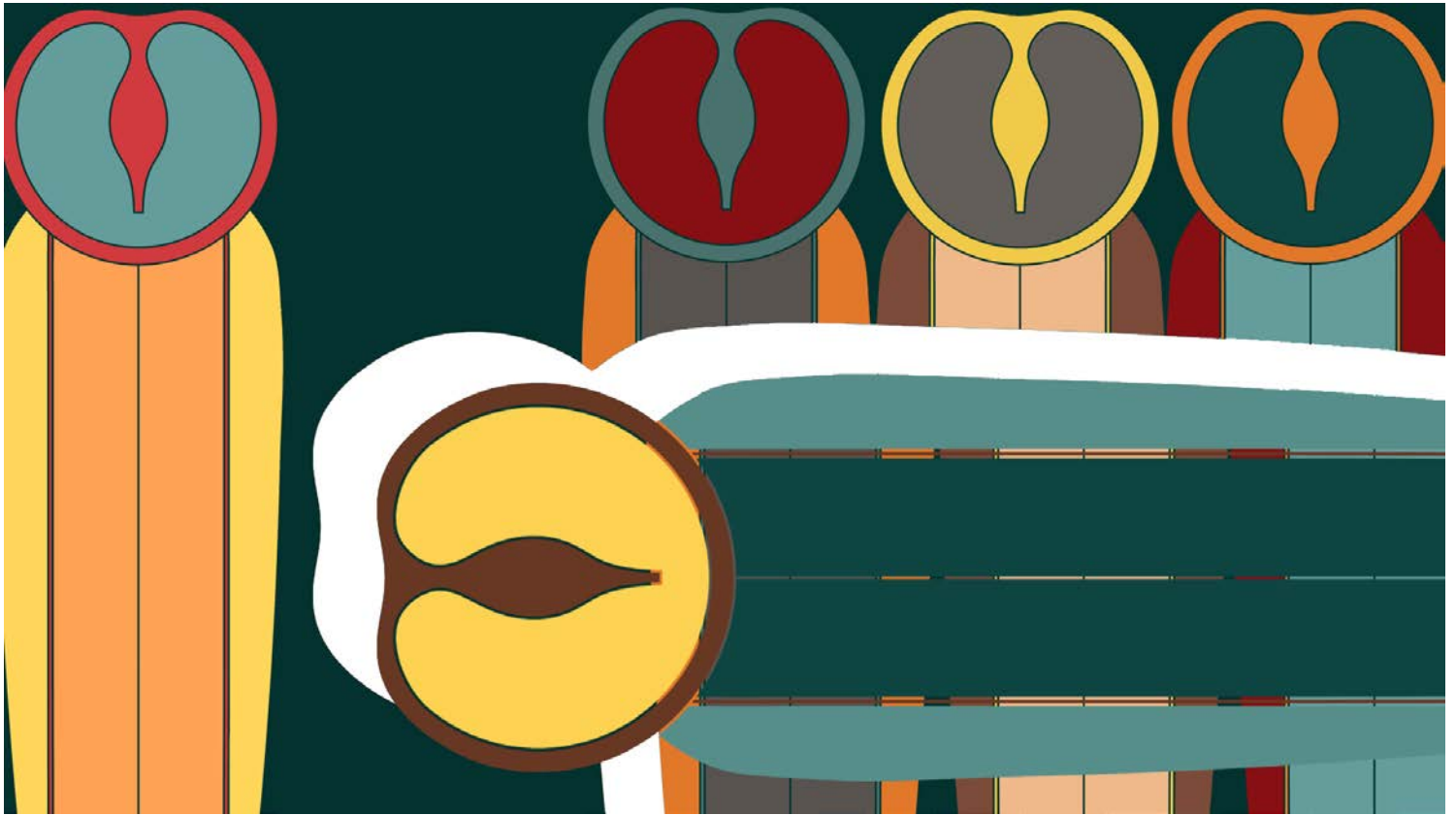


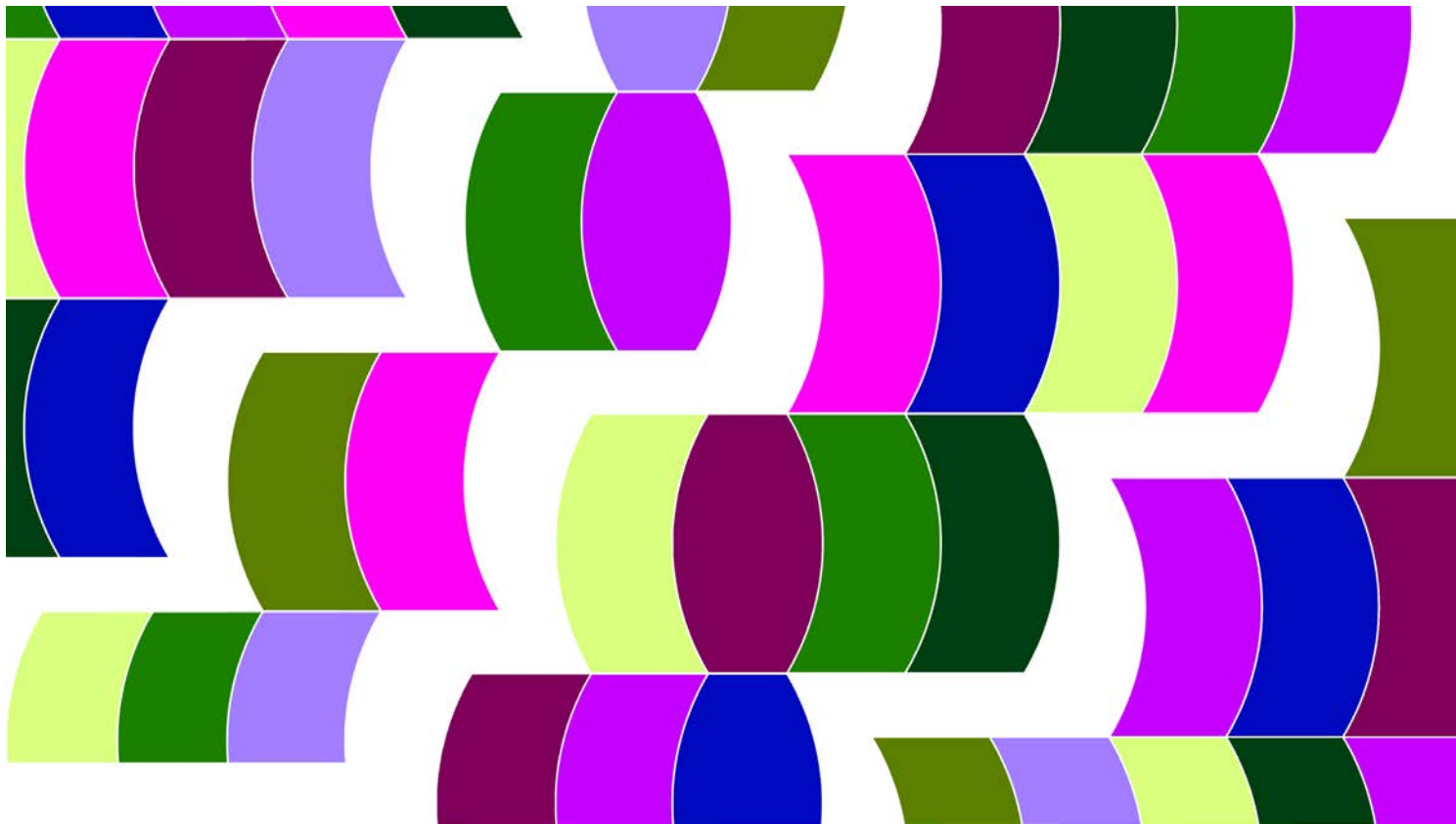




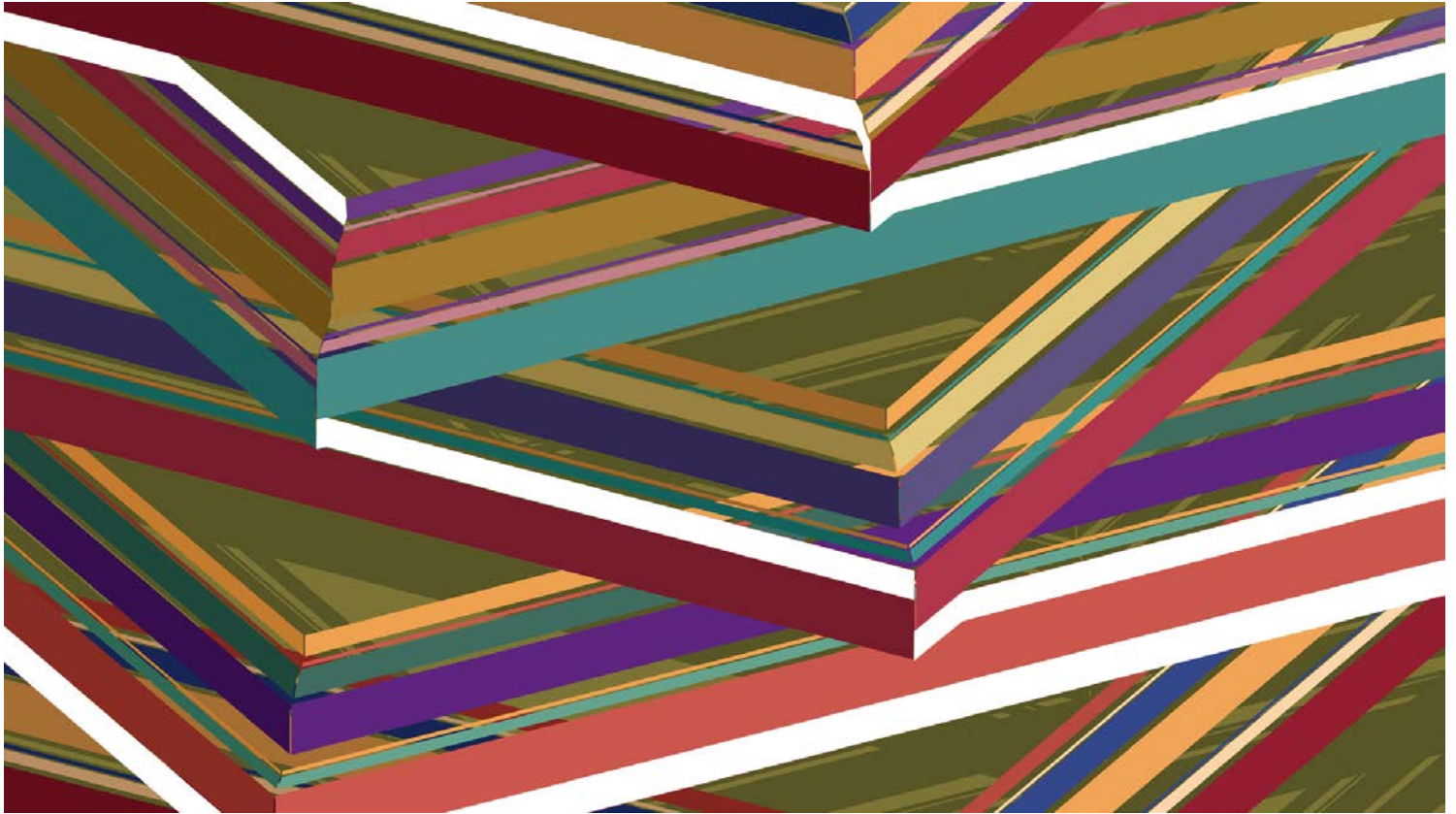




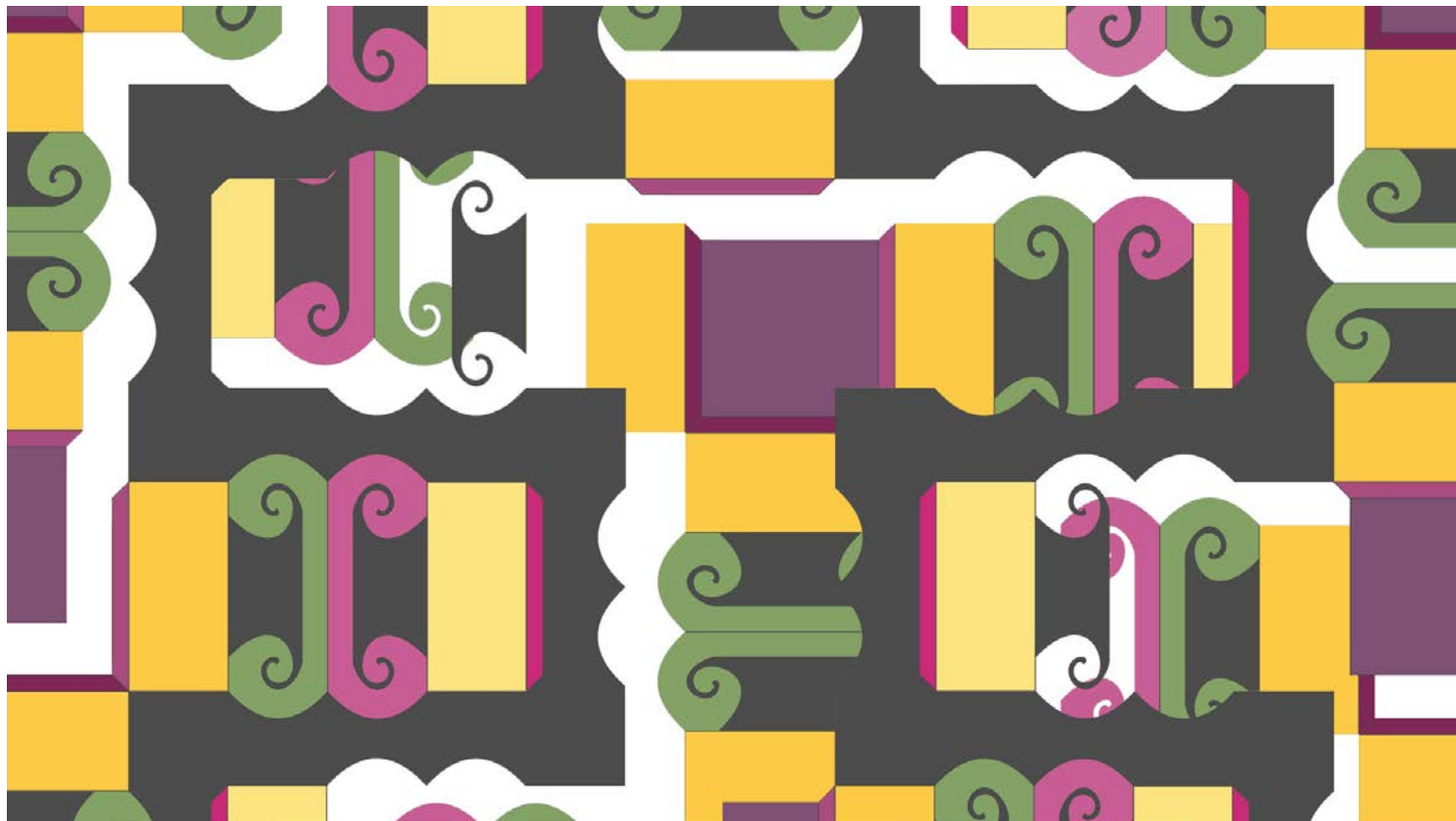




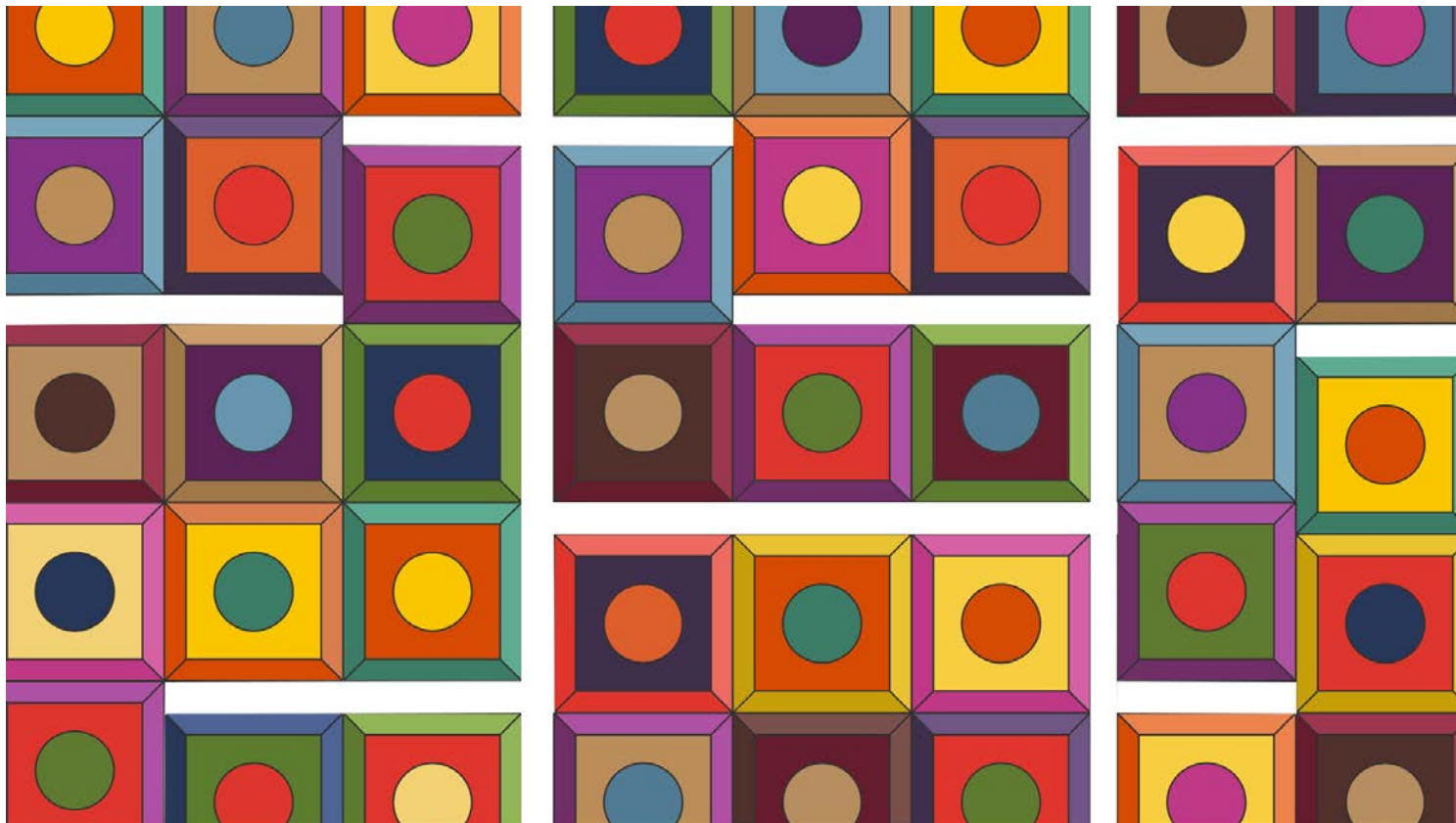




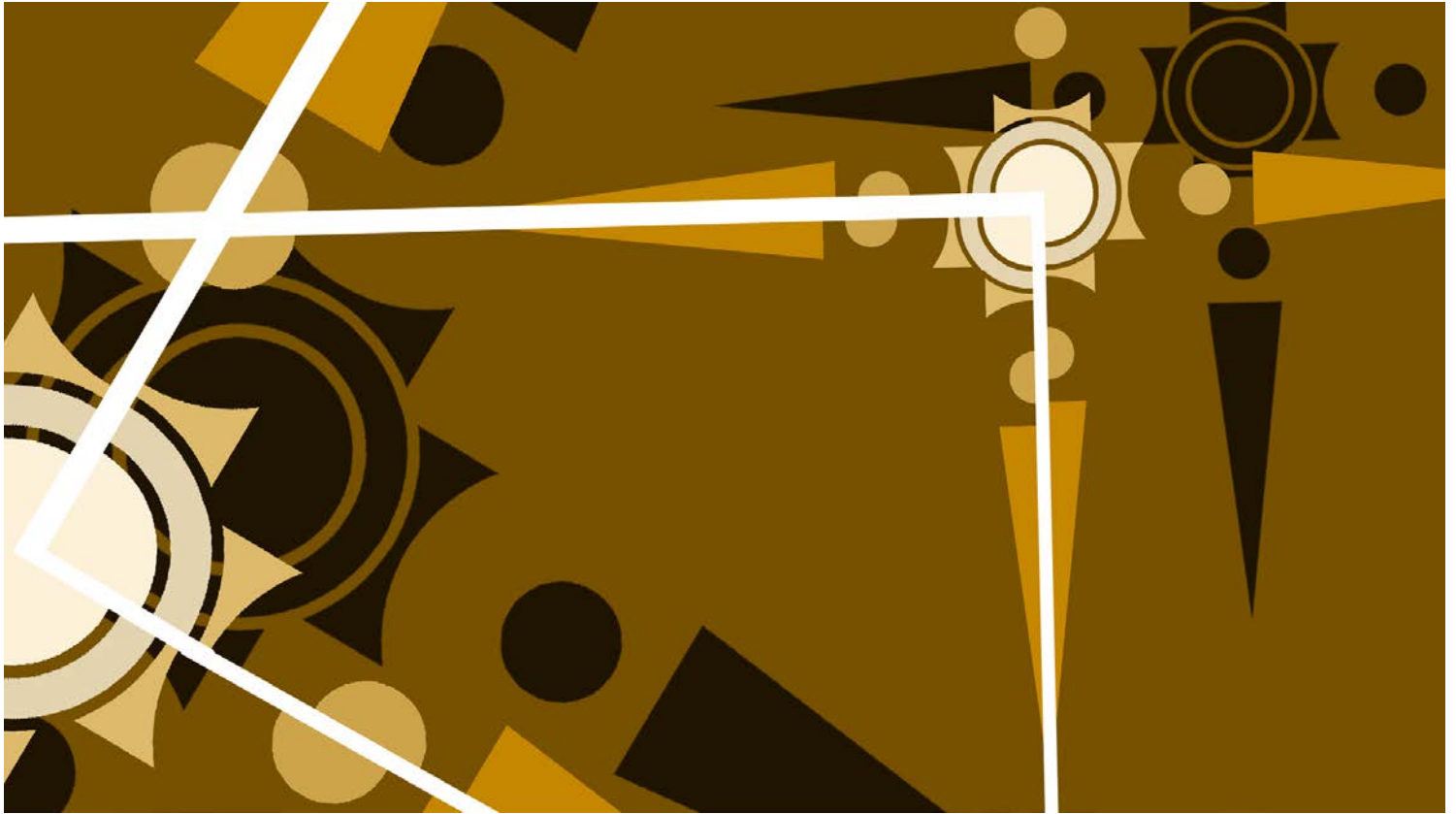














**welters**<sup>®</sup>  
ORGANISATION  
WORLDWIDE  
**Design and Innovation**

PO Box 159, Carlisle,  
Great Britain, CA2 5BG

Tel: 08702 416 422

Fax: 01228 674 959

[www.welters-worldwide.com](http://www.welters-worldwide.com)  
[admin@welters-worldwide.com](mailto:admin@welters-worldwide.com)